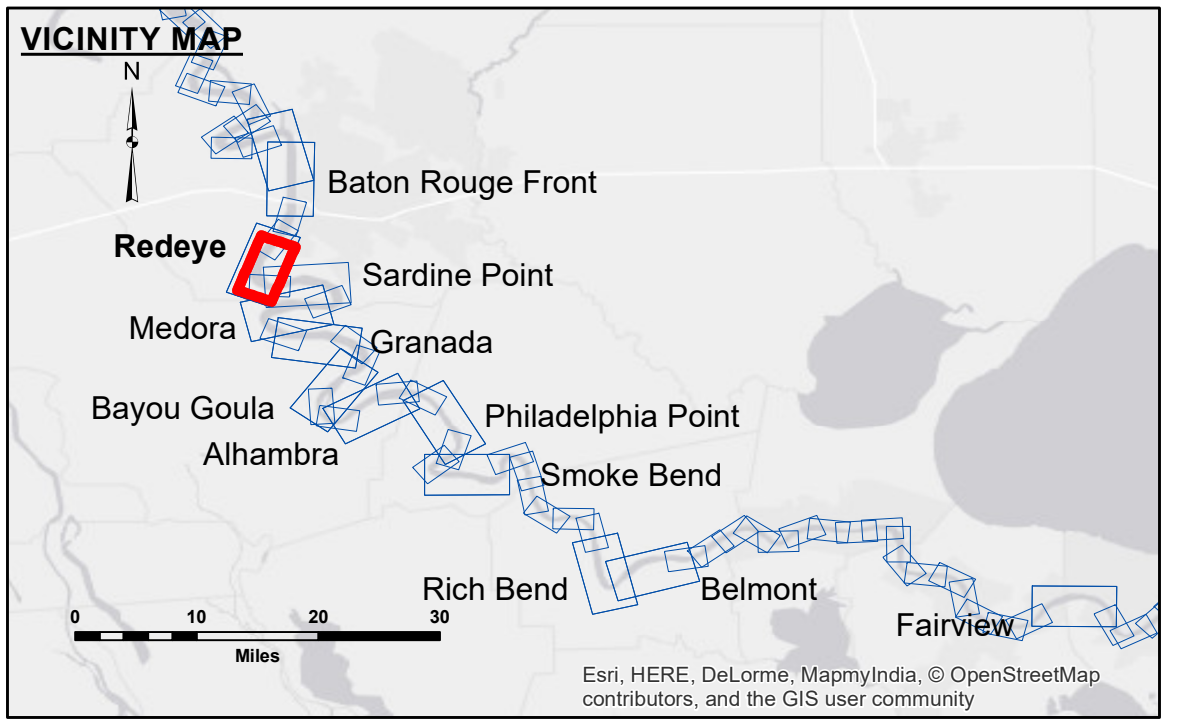
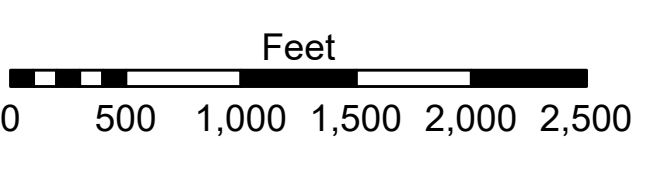
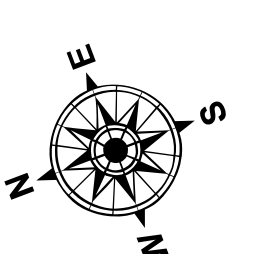


DIKE NO.	CONSTRUCTED DIKE ELEVATION
1	-5 NGVD
2	OR -7.6 LWRP
3	OR -7.6 LWRP
4	OR -2.6 LWRP
5	OR -2.6 LWRP
6	OR -2.6 LWRP



LEGEND	
--- Federal Navigation Channel	○ Cable Area
— Federal Navigation Center Line	□ Placement Area
— As-built Pipeline/Cable	□ Borrow Area
..... Unconfirmed Pipeline/Cable	● Shoalest Sounding**
— Project Depth Contour	☆ Beacon, General
	◆ Red Navigation Buoy
	◆ Green Navigation Buoy
	○ Obstruction Point
	✈ Wrecks-Submerged
	0' and above
	0' to -5'
	-5' to -10'
	-10' to -20'
	-20' to -30'
	-30' to -35'
	-35' to -40'
	-40' to -45'
	-45' and below



LWRP: 2.6
 Gage Reading: BR:18.87 D:11.15 USED:15.9 NGVD
 Sea Conditions: CALM
 Vessel Name: OB-189
 Survey Type: CONDITION
 Sounding Frequency***: HIGH

NOTES:
 Horizontal Coordinate System:
 North American Datum of 1983 (NAD83), projected to the State Plane Coordinate System (SPCS), Louisiana South Zone. Distance units in U.S. Survey Feet.
 Vertical Datum:
 Soundings are shown in feet and indicate depths below Low Water Reference Plane 2007 (NGVD).
 Distances on the Mississippi River, above and below Head of Passes are shown at 1 mile intervals.
 The location of navigation aids are base on and provided by the U.S. Coast Guard and USACE crew.
 2010 Aerial Photography data source: NAIP, USDA-FSA-APFO Aerial Photography Field Office.
 Reference is N.O.A.A. Navigation Chart No. 11370.
 ** Shoalest Sounding per Quarter per Reach.
 *** High frequency (200 kHz) survey data represents the first signal return at a sounding location and will include suspended solids, known as "fluff", if present. Low frequency (20 kHz) survey data normally penetrates through this "fluff" layer to depict elevations of consolidated bottom material. Low frequency accuracies may vary depending on channel conditions and fathometer settings.



DISCLAIMER:
 The information depicted on this map represents the results of a survey conducted under contract to the U.S. Army Corps of Engineers. The data was collected and processed in accordance with the specifications of the contract. The user is responsible for the accuracy, completeness, and reliability of the data for its intended use. The user is not to be held liable for any damage or injury resulting from the use of this data for purposes other than those intended. The information depicted on this map represents the results of a survey conducted under contract to the U.S. Army Corps of Engineers. The data was collected and processed in accordance with the specifications of the contract. The user is responsible for the accuracy, completeness, and reliability of the data for its intended use. The user is not to be held liable for any damage or injury resulting from the use of this data for purposes other than those intended.

Submitted:	Surveyed By: DS/SR
Recommended: Chief, Survey Section	Plotted By: BD
Approved: Chief, Waterways Maintenance Section	Checked By: AC

**MISSISSIPPI RIVER - B.R. TO GULF
 REDEYE CROSSING
 MD_04_RED_20180627_AD_MSB
 27 June 2018**

**Sheet Reference Number
 4 of 97**

Revision Number:
 3.12-20160811