

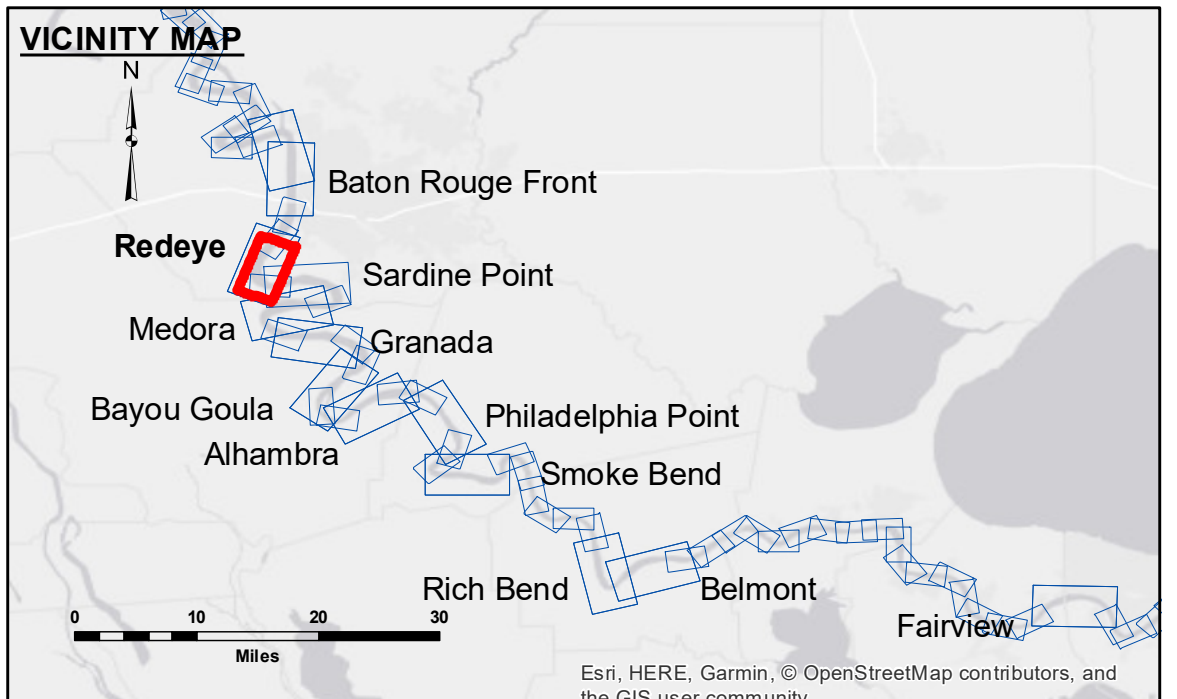
DIKE NO.	CONSTRUCTED DIKE ELEVATION
1	-5 NGVD OR -7.6 LWRP
2	-5 NGVD OR -7.6 LWRP
3	0 NGVD OR -2.6 LWRP
4	0 NGVD OR -2.6 LWRP
5	0 NGVD OR -2.6 LWRP
6	0 NGVD OR -2.6 LWRP



DISCLAIMER: The United States Government furnishes these data and the recipient accepts and uses them with the express understanding that the Government makes no warranty, expressed or implied, concerning the accuracy, completeness, reliability, usability or suitability for any particular purpose of the information. The user is responsible for the results obtained from the application of the data for other than its intended purpose. Data Contaminated: Hydrographic survey data is subject to change rapidly due to several factors including but not limited to dredging, sedimentation, and channel migration. The user is responsible for the accuracy of the data and for the results obtained from its use. The information depicted on this map represents the results of a survey conducted on the date of the survey and is not intended to represent the general condition existing at that time.

Submitted:	Surveyed By: SPPM
Recommended: Chief Survey Section	Plotted By: BD
Approved: Chief Waterways Maintenance Section	Checked By: AC

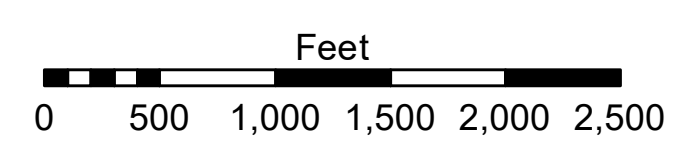
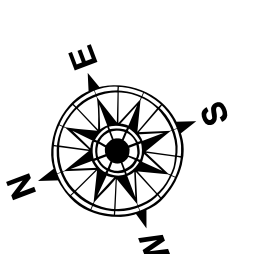
**MISSISSIPPI RIVER - B.R. TO GULF
REDEYE CROSSING
MD_04_RED_20190416_CS
16 April 2019**



LEGEND

- Federal Navigation Channel
- Federal Navigation Center Line
- As-built Pipeline/Cable
- Unconfirmed Pipeline/Cable
- Project Depth Contour
- Cable Area
- Placement Area
- Anchorage Area
- ⊗ Obstruction Point
- ✈ Wrecks-Submerged
- Borrow Area
- Shoalest Sounding**
- ★ Beacon, General
- ◆ Red Navigation Buoy
- ◆ Green Navigation Buoy

0' and above	0' to -5'
-5' to -10'	-10' to -20'
-20' to -30'	-30' to -35'
-35' to -40'	-40' to -45'
-45' and below	



LWRP: 2.6
Gage Reading: BR:39.8 D:29.02 USED:38.90 NGVD
Sea Conditions: CALM
Vessel Name: OB-167
Survey Type: CONDITION
Sounding Frequency***: HIGH

NOTES:
Horizontal Coordinate System: North American Datum of 1983 (NAD83), projected to the State Plane Coordinate System (SPCS), Louisiana South Zone. Distance units in U.S. Survey Feet.
Vertical Datum: Soundings are shown in feet and indicate depths below Low Water Reference Plane 2007 (NGVD).
Distances on the Mississippi River, above and below Head of Passes are shown at 1 mile intervals.
The location of navigation aids are based on and provided by the U.S. Coast Guard and USACE crew.
2015 Aerial Photography data source: NAIP, USDA-FSA-APFO Aerial Photography Field Office.
Reference is N.O.A. Navigation Chart No. 11370.
** Shoalest Sounding per Quarter per Reach.
*** High frequency (200 kHz) survey data represents the first signal return at a sounding location and will include suspended solids, known as "fluff", if present. Low frequency (20 kHz) survey data normally penetrates through this "fluff" layer to depict elevations of consolidated bottom material. Low frequency accuracies may vary depending on channel conditions and fathometer settings.

**Sheet Reference Number
4 of 97**