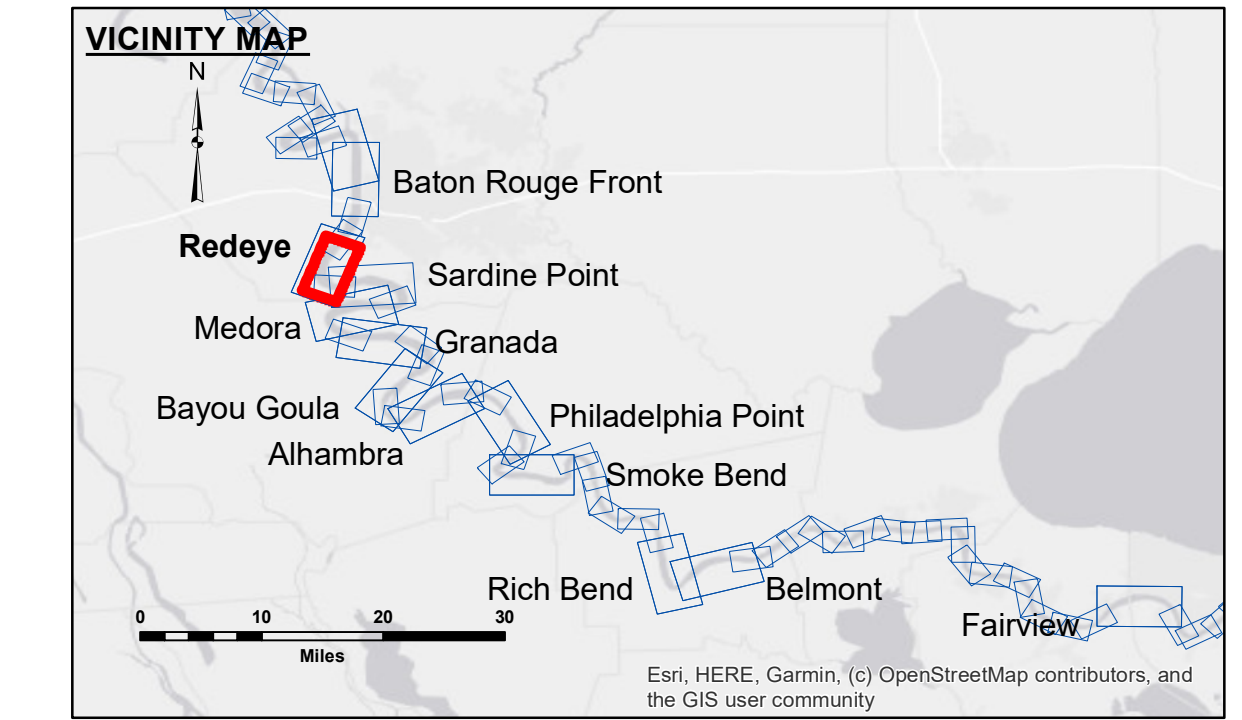
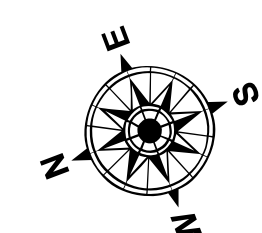


DIKE NO.	CONSTRUCTED DIKE ELEVATION
1	-5 NGVD
2	OR -7.6 LWRP
3	OR -7.6 LWRP
4	OR -2.6 LWRP
5	OR -2.6 LWRP
6	OR -2.6 LWRP

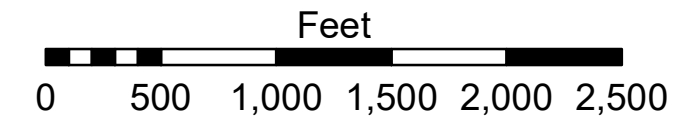


LEGEND	
--- Federal Navigation Channel	● Cable Area
— Federal Navigation Center Line	■ Placement Area
— As-built Pipeline/Cable	□ Anchorage Area
..... Unconfirmed Pipeline/Cable	⊗ Obstruction Point
— Project Depth Contour	✈ Wrecks-Submerged
□ Borrow Area	★ Beacon, General
● Shoalest Sounding**	◆ Red Navigation Buoy
◆ Green Navigation Buoy	

0' and above	0' to -5'
-5' to -10'	-10' to -20'
-20' to -30'	-30' to -35'
-35' to -40'	-40' to -45'
-45' and below	



LWRP: 2.4  
 Gage Reading: BR:35.9D:25.5 USED:35.1 NAVD  
 Sea Conditions: SMOOTH  
 Vessel Name: LAFORUCHE  
 Survey Type: CS  
 Sounding Frequency\*\*\*: HIGH



**NOTES:**  
 Horizontal Coordinate System:  
 North American Datum of 1983 (NAD83), projected to the State Plane Coordinate System (SPCS), Louisiana South Zone. Distance units in U.S. Survey Feet.  
 Vertical Datum:  
 Soundings are shown in feet and indicate depths below Low Water Reference Plane 2007 (NAVD).  
 Distances on the Mississippi River, above and below Head of Passes are shown at 1 mile intervals.  
 The location of navigation aids are based on and provided by the U.S. Coast Guard and USACE crew.  
 2015 Aerial Photography data source: NAIP, USDA-FSA-APFO Aerial Photography Field Office.  
 Reference is N.O.A. Navigation Chart No. 11370.  
 \*\* Shoalest Sounding per Quarter per Reach.  
 \*\*\* High frequency (200 kHz) survey data represents the first signal return at a sounding location and will include suspended solids, known as "fluff", if present. Low frequency (20 kHz) survey data normally penetrates through this "fluff" layer to depict elevations of consolidated bottom material. Low frequency accuracies may vary depending on channel conditions and fathometer settings.



**DISCLAIMER:**  
 The United States Government furnishes these data and the recipient accepts and uses them with the express understanding that the data are not to be used for any purpose other than that for which they were originally collected, and that the data are not to be used for any purpose other than that for which they were originally collected, and that the data are not to be used for any purpose other than that for which they were originally collected.  
 The information depicted on this map represents the results of a survey conducted on or about the date of the survey. The user is responsible for the accuracy, completeness, and timeliness of the data. The user is responsible for the accuracy, completeness, and timeliness of the data. The user is responsible for the accuracy, completeness, and timeliness of the data.  
 The information depicted on this map represents the results of a survey conducted on or about the date of the survey. The user is responsible for the accuracy, completeness, and timeliness of the data. The user is responsible for the accuracy, completeness, and timeliness of the data.

U.S. ARMY CORPS OF ENGINEERS NEW ORLEANS DISTRICT		
Submitted:	Surveyed By: DIS/SIS	Plotted By: AO
Recommended:	Checked By: AO	Checked By: AO
Approved:	Checked By: AO	Checked By: AO

**MISSISSIPPI RIVER - B.R. TO GULF  
 REDEYE CROSSING  
 MD\_04\_RED\_20200211\_CS  
 11 February 2020**

**Sheet Reference Number  
 4 of 97**

Revision Number:  
 4-10-2010/012