

DIKE NO.	CONSTRUCTED DIKE ELEVATION
1	-5 NGVD
2	OR -7.6 LWRP
3	-5 NGVD
4	OR -7.6 LWRP
5	0 NGVD
6	OR -2.6 LWRP
7	0 NGVD
8	OR -2.6 LWRP
9	0 NGVD
10	OR -2.6 LWRP

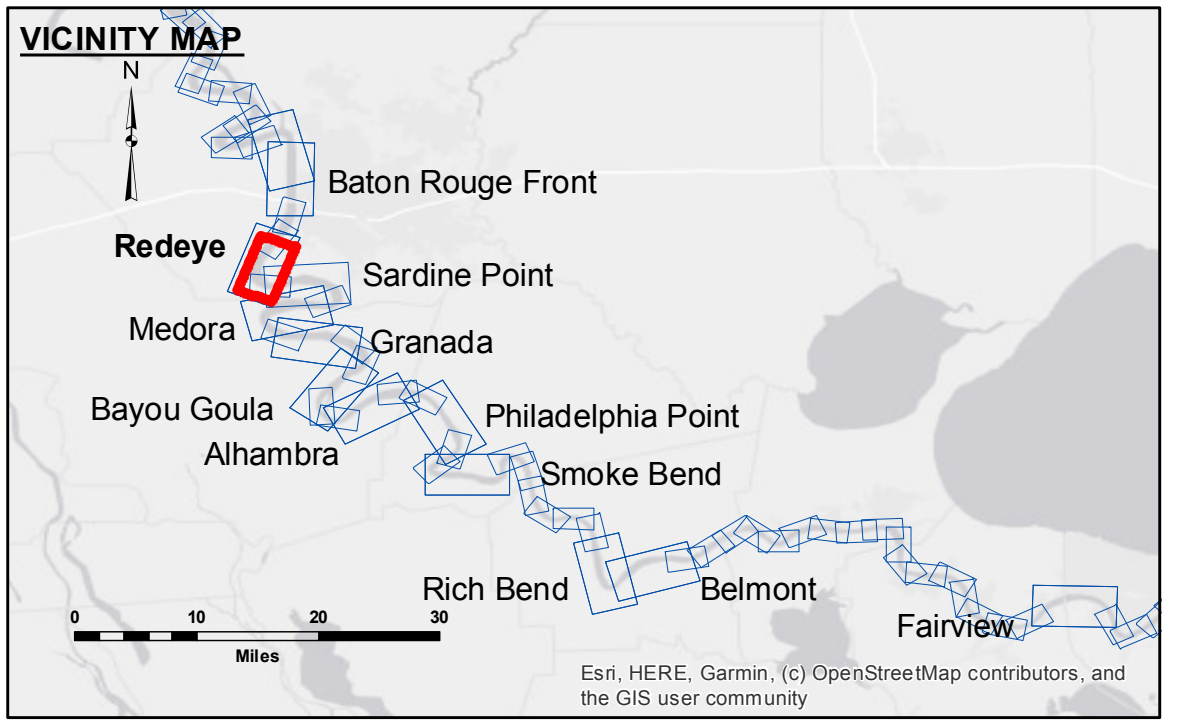


Access/Availability: The United States Government furnishes these data and the recipient accepts and uses them with the express understanding that they are for official use only and are not to be distributed, copied, or used for any purpose other than that for which they were provided. The user is responsible for the results of any use of these data. The application of the data for other than its intended purpose is at the user's risk.

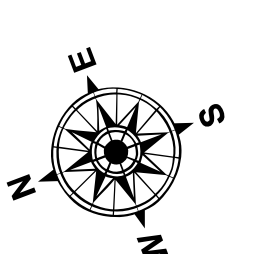
Disclaimer: Hydrographic survey data is subject to change rapidly due to several factors including but not limited to dredging, accretion, and shifting of the river channel. The Corps of Engineers does not warrant the accuracy of the data for any purpose other than that for which it was collected. The information depicted on this map represents the results of a survey conducted on the date indicated and is not to be considered as representing the general condition existing at that time.

Submitted:	Surveyed By:	Plotted By:	Checked By:
Recommended:	DJS/SPS	AO	AO
Approved:	Chief Survey Section		Chief Waterways Maintenance Section

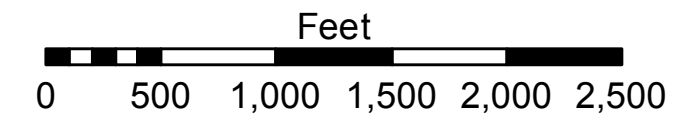
MISSISSIPPI RIVER - B.R. TO GULF
REDEYE CROSSING
MD_04_RED_20200401_BD
01 April 2020



LEGEND		Color Legend	
--- Federal Navigation Channel	● Cable Area	Green	0' and above
— Federal Navigation Center Line	■ Placement Area	Yellow	0' to -5'
— As-built Pipeline/Cable	□ Anchorage Area	Orange	-5' to -10'
..... Unconfirmed Pipeline/Cable	⊗ Obstruction Point	Light Blue	-10' to -20'
— Project Depth Contour	★ Beacon, General	Blue	-20' to -30'
	◆ Wrecks-Submerged	Dark Blue	-30' to -35'
		Pink	-35' to -40'
		Light Purple	-40' to 45'
		White	-45' and below
		Blue Box	Borrow Area
		Yellow Dot	Shoalest Sounding**



LWRP: 2.4
 Gage Reading: BR:39.9D:28.938.8 NAVD
 Sea Conditions: SMOOTH
 Vessel Name: LAFOURCHE
 Survey Type: BD
 Sounding Frequency***: HIGH



NOTES:

Horizontal Coordinate System:
 North American Datum of 1983 (NAD83), projected to the State Plane Coordinate System (SPCS), Louisiana South Zone. Distance units in U.S. Survey Feet.

Vertical Datum:
 Soundings are shown in feet and indicate depths below Low Water Reference Plane 2007 (NAVD).

Distances on the Mississippi River, above and below Head of Passes are shown at 1 mile intervals.

The location of navigation aids are base on and provided by the U.S. Coast Guard and USACE crew.

2015 Aerial Photography data source: NAIP, USDA-FSA-APFO Aerial Photography Field Office.

Reference is N.O.A. Navigation Chart No. 11370.

** Shoalest Sounding per Quarter per Reach.

*** High frequency (200 kHz) survey data represents the first signal return at a sounding location and will include suspended solids, known as "fluff", if present. Low frequency (20 kHz) survey data normally penetrates through this "fluff" layer to depict elevations of consolidated bottom material. Low frequency accuracies may vary depending on channel conditions and fathometer settings.

Sheet Reference Number
4 of 97

Revision Number:
 4.0-20190702