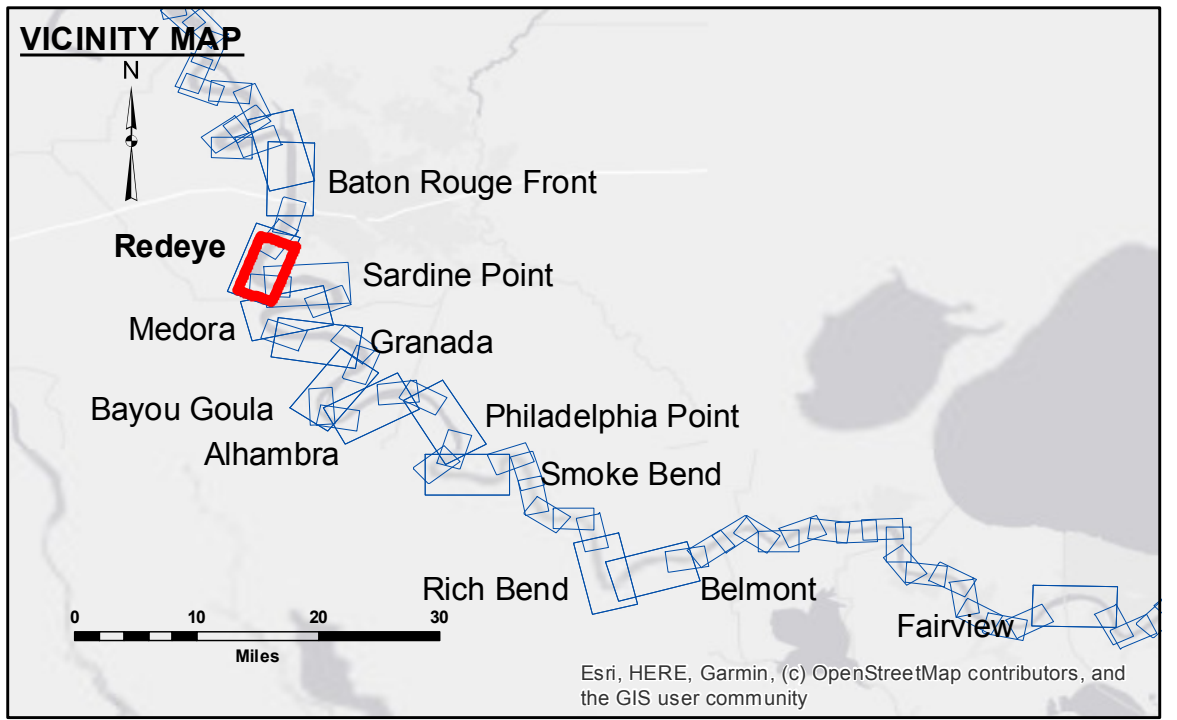


DISCLAIMER: The data represented on this map represents the results of a survey conducted by the U.S. Army Corps of Engineers. The data is intended for informational purposes only and is not to be used for any purpose other than that intended. The user is responsible for the accuracy, reliability, and use of the data. The Corps of Engineers does not warrant the accuracy, reliability, or use of the data for any purpose other than that intended. The Corps of Engineers is not responsible for any damage or injury resulting from the use of the data. The information depicted on this map represents the results of a survey conducted by the U.S. Army Corps of Engineers. The data is intended for informational purposes only and is not to be used for any purpose other than that intended. The user is responsible for the accuracy, reliability, and use of the data. The Corps of Engineers does not warrant the accuracy, reliability, or use of the data for any purpose other than that intended. The Corps of Engineers is not responsible for any damage or injury resulting from the use of the data.

Submitted:	Surveyed By:	RYLAND/DAMIS
Recommended:	Plotted By:	BD
Approved:	Checked By:	AC

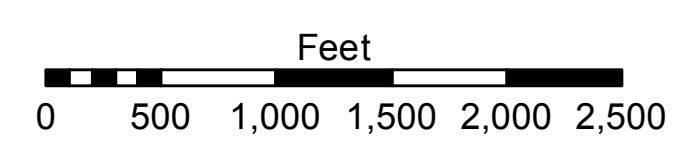
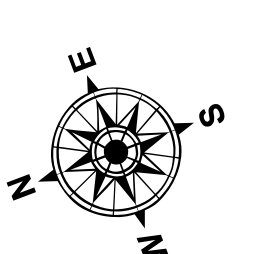
U.S. ARMY CORPS OF ENGINEERS
NEW ORLEANS DISTRICT

**MISSISSIPPI RIVER - B.R. TO GULF
REDEYE CROSSING
MD_04_RED_20200922_CS
22 September 2020**



LEGEND

- Federal Navigation Channel
- Federal Navigation Center Line
- As-built Pipeline/Cable
- Unconfirmed Pipeline/Cable
- Project Depth Contour
- Cable Area
- Placement Area
- Anchorage Area
- ⊗ Obstruction Point
- ✈ Wrecks-Submerged
- Borrow Area
- Shoalest Sounding**
- ☆ Beacon, General
- ♦ Red Navigation Buoy
- ◆ Green Navigation Buoy
- 0' and above
- 0' to -5'
- 5' to -10'
- 10' to -20'
- 20' to -30'
- 30' to -35'
- 35' to -40'
- 40' to -45'
- 45' and below



LWRP: 2.4
Gage Reading: BR:12.6 D:7.9 USED:12.20 NAVD
Sea Conditions: CALM
Vessel Name: OB-189
Survey Type: CS
Sounding Frequency***: HIGH

NOTES:

Horizontal Coordinate System:
North American Datum of 1983 (NAD83), projected to the State Plane Coordinate System (SPCS), Louisiana South Zone. Distance units in U.S. Survey Feet.

Vertical Datum:
Soundings are shown in feet and indicate depths below Low Water Reference Plane 2007 (NAVD).

Distances on the Mississippi River, above and below Head of Passes are shown at 1 mile intervals.

The location of navigation aids are base on and provided by the U.S. Coast Guard and USACE crew.

2015 Aerial Photography data source: NAIP, USDA-FSA-APFO Aerial Photography Field Office.

Reference is N.O.A. Navigation Chart No. 11370.

** Shoalest Sounding per Quarter per Reach.

*** High frequency (200 kHz) survey data represents the first signal return at a sounding location and will include suspended solids, known as "fluff", if present. Low frequency (20 kHz) survey data normally penetrates through this "fluff" layer to depict elevations of consolidated bottom material. Low frequency accuracies may vary depending on channel conditions and fathometer settings.

**Sheet Reference Number
4 of 97**