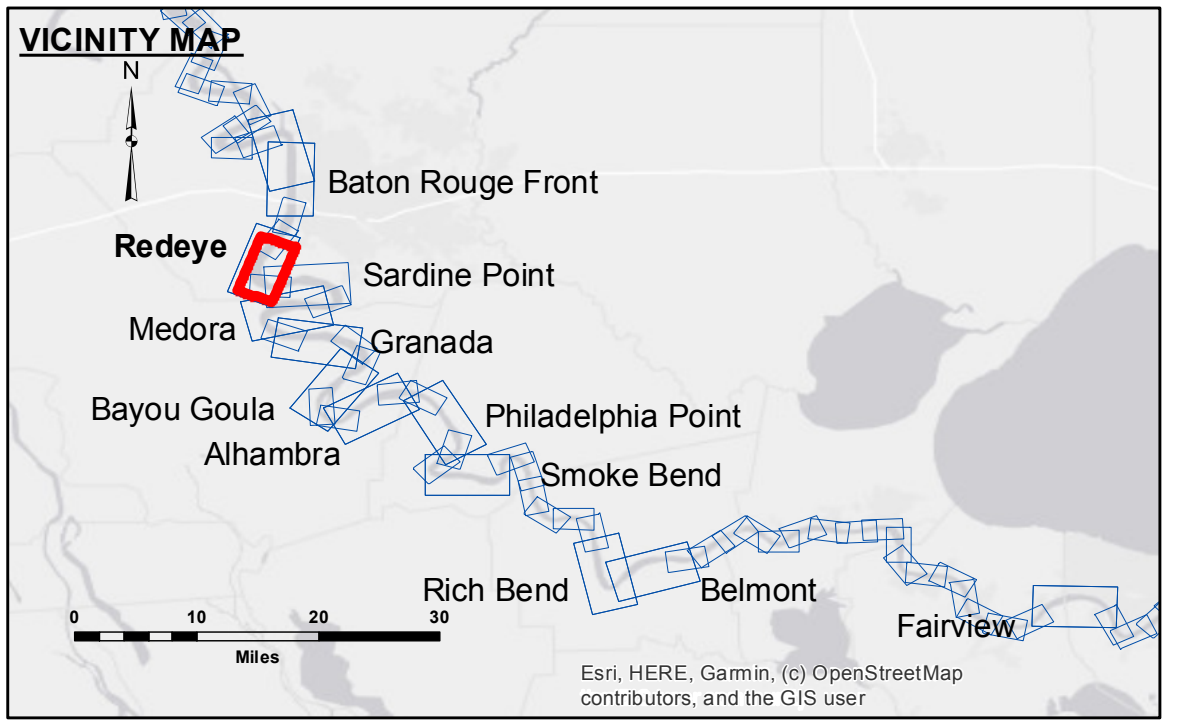


DISCLAIMER: The United States Government furnishes these data and the recipient accepts and uses them with the express understanding that the data are not warranted for any purpose other than that for which they were prepared. The user is responsible for the results of any use of the data for other than the intended purpose. The application of the data for other than the intended purpose may result in injury or damage to persons or property. The user assumes all liability for any use of the data for other than the intended purpose. The information depicted on this map represents the results of a survey conducted on the ground and is not intended to represent the general condition existing at that time. The Corps of Engineers does not warrant the accuracy of the data for any purpose other than that for which they were prepared. The user is responsible for the results of any use of the data for other than the intended purpose. The application of the data for other than the intended purpose may result in injury or damage to persons or property. The user assumes all liability for any use of the data for other than the intended purpose.

Submitted:	Surveyed By: DS/PS
Recommended:	Plotted By: AO
Approved:	Checked By: AO

U.S. ARMY CORPS OF ENGINEERS
NEW ORLEANS DISTRICT

**MISSISSIPPI RIVER - B.R. TO GULF
REDEYE CROSSING
MD_04_RED_20210621_CS
21 June 2021**



LEGEND	
--- Federal Navigation Channel	● Cable Area
— Federal Navigation Center Line	■ Placement Area
— As-built Pipeline/Cable	□ Anchorage Area
..... Unconfirmed Pipeline/Cable	⊗ Obstruction Point
— Project Depth Contour	★ Wrecks-Submerged
□ Borrow Area	★ Beacons, General
● Shoalest Sounding**	◆ Red Navigation Buoy
◆ Green Navigation Buoy	

NOTES:

Horizontal Coordinate System:
North American Datum of 1983 (NAD83), projected to the State Plane Coordinate System (SPCS), Louisiana South Zone. Distance units in U.S. Survey Feet.

Vertical Datum:
Soundings are shown in feet and indicate depths below Low Water Reference Plane 2007 (NAVD). Distances on the Mississippi River, above and below Head of Passes are shown at 1 mile intervals.

The location of navigation aids are based on and provided by the U.S. Coast Guard and USACE crew.

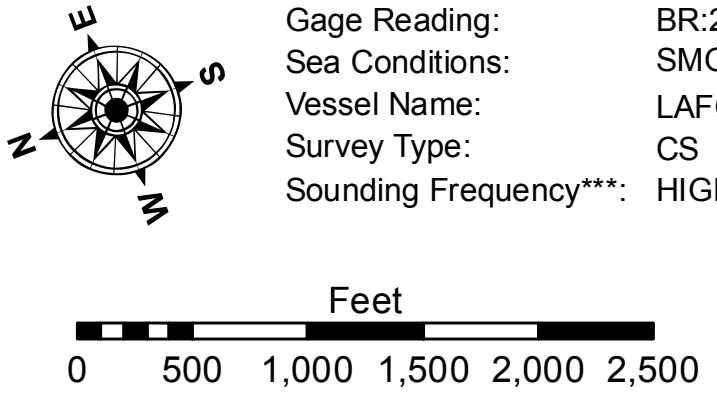
2015 Aerial Photography data source: NAIP, USDA-FSA-APFO Aerial Photography Field Office.

Reference is N.O.A.A. Navigation Chart No. 11370.

** Shoalest Sounding per Quarter per Reach.

*** High frequency (200 kHz) survey data represents the first signal return at a sounding location and will include suspended solids, known as "fluff", if present. Low frequency (20 kHz) survey data normally penetrates through this "fluff" layer to depict elevations of consolidated bottom material. Low frequency accuracies may vary depending on channel conditions and bathymeter settings.

LWRP: 2.4
Gage Reading: BR:28.0 D:18.4 USED:27.2 NAVD
Sea Conditions: SMOOTH
Vessel Name: LAFOURCHE
Survey Type: CS
Sounding Frequency***: HIGH



**Sheet Reference Number
4 of 97**