

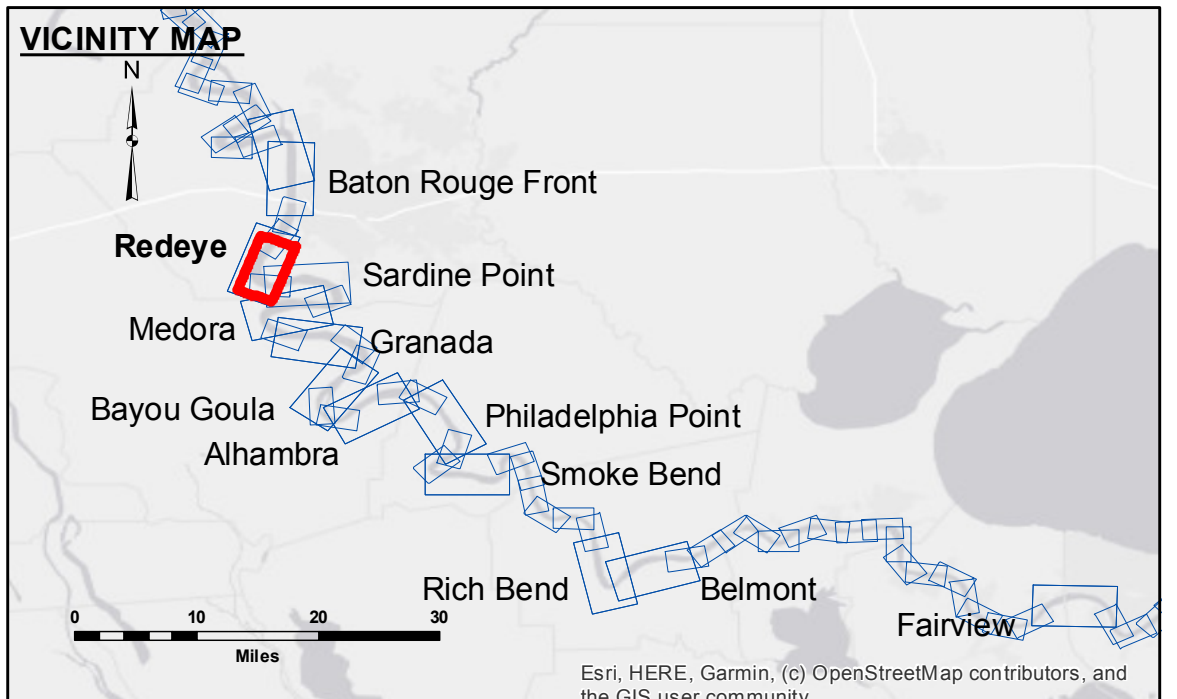
DIKE NO.	CONSTRUCTED DIKE ELEVATION
1	-5 NGVD OR -7.6 LWRP
2	-5 NGVD OR -7.6 LWRP
3	0 NGVD OR -2.6 LWRP
4	0 NGVD OR -2.6 LWRP
5	0 NGVD OR -2.6 LWRP
6	0 NGVD OR -2.6 LWRP



DISCLAIMER: The data represents the results of data collection for a specific US Army Corps of Engineers project. The data is not intended for use in any other project or for any purpose other than the one for which it was collected. The user is responsible for the results of any use of this data. The user is not to be held liable for any damage or injury resulting from the use of this data. The user is not to be held liable for any damage or injury resulting from the use of this data. The user is not to be held liable for any damage or injury resulting from the use of this data.

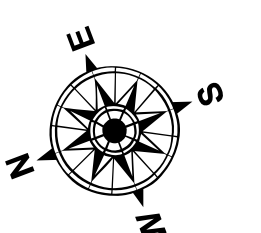
Submitted:	Surveyed By: DS/PS
Recommended:	Plotted By: AO
Approved:	Checked By: BD

**MISSISSIPPI RIVER - B.R. TO GULF
REDEYE CROSSING
MD_04_RED_20210804_CS
04 August 2021**

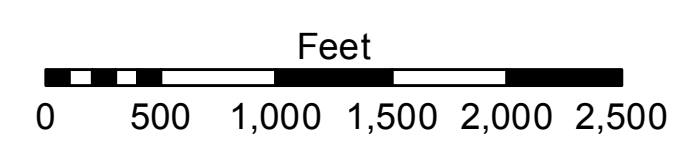


LEGEND	
--- Federal Navigation Channel	● Cable Area
— Federal Navigation Center Line	■ Placement Area
— As-built Pipeline/Cable	□ Anchorage Area
..... Unconfirmed Pipeline/Cable	⊗ Obstruction Point
— Project Depth Contour	✈ Wrecks-Submerged
□ Borrow Area	★ Beacon, General
● Shoalest Sounding**	◆ Red Navigation Buoy
★ Beacon, General	◆ Green Navigation Buoy

0' and above	0' to -5'
-5' to -10'	-10' to -20'
-20' to -30'	-30' to -35'
-35' to -40'	-40' to -45'
-45' and below	



LWRP: 2.4
Gage Reading: BR:19.9 D:11.8 USED:19.2 NAVD
Sea Conditions: 1 FT
Vessel Name: M/V LAFOURCHE
Survey Type: CS
Sounding Frequency***: HIGH



NOTES:
Horizontal Coordinate System: North American Datum of 1983 (NAD83), projected to the State Plane Coordinate System (SPCS), Louisiana South Zone. Distance units in U.S. Survey Feet.
Vertical Datum: Soundings are shown in feet and indicate depths below Low Water Reference Plane 2007 (NAVD).
Distances on the Mississippi River, above and below Head of Passes are shown at 1 mile intervals.
The location of navigation aids are based on and provided by the U.S. Coast Guard and USACE crew.
2015 Aerial Photography data source: NAIP, USDA-FSA-APFO Aerial Photography Field Office.
Reference is N.O.A. Navigation Chart No. 11370.
** Shoalest Sounding per Quarter per Reach.
*** High frequency (200 kHz) survey data represents the first signal return at a sounding location and will include suspended solids, known as "fluff", if present. Low frequency (20 kHz) survey data normally penetrates through this "fluff" layer to depict elevations of consolidated bottom material. Low frequency accuracies may vary depending on channel conditions and bathymeter settings.

**Sheet Reference Number
4 of 97**