

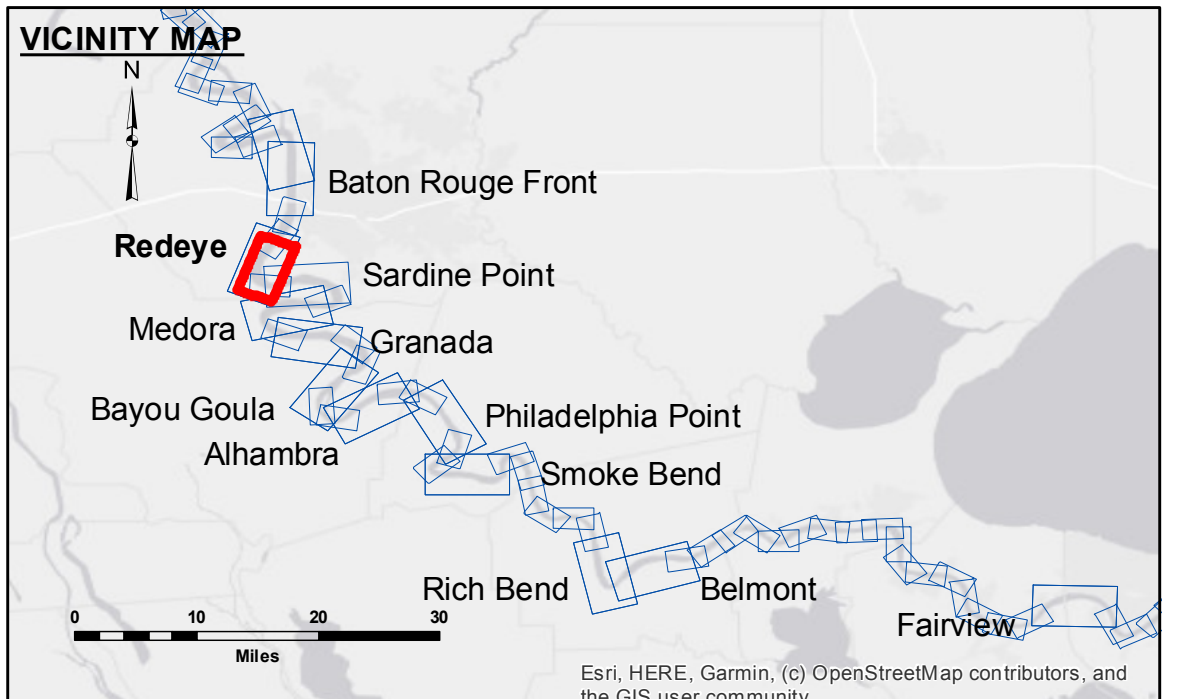
DIKE NO.	CONSTRUCTED DIKE ELEVATION
1	-5 NGVD OR -7.6 LWRP
2	-5 NGVD OR -7.6 LWRP
3	0 NGVD OR -2.6 LWRP
4	0 NGVD OR -2.6 LWRP
5	0 NGVD OR -2.6 LWRP
6	0 NGVD OR -2.6 LWRP



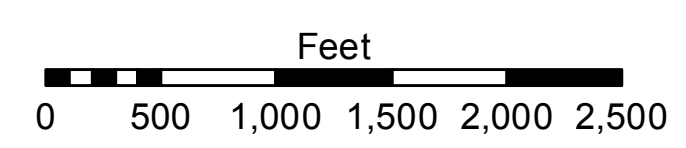
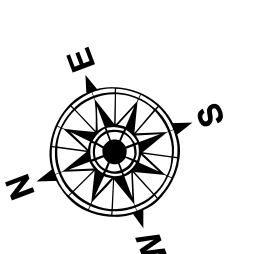
**ACCESS NOTES**  
 Access Restrictions: The United States Government furnishes these data and the recipient accepts and uses them with the express understanding that they are not to be used for any purpose other than that for which they were prepared, and that the user is responsible for the results. The information depicted on this map represents the results of a survey conducted by the United States Army Corps of Engineers. The information depicted on this map represents the results of a survey conducted by the United States Army Corps of Engineers. The information depicted on this map represents the results of a survey conducted by the United States Army Corps of Engineers.

Submitted:	Surveyed By: DS/PS
Recommended:	Plotted By: BD
Approved:	Checked By: AC

**MISSISSIPPI RIVER - B.R. TO GULF  
 REDEYE CROSSING  
 MD\_04\_RED\_20210817\_AD  
 17 August 2021**



LEGEND		Depth Contours	
--- Federal Navigation Channel	○ Cable Area	Green	0' and above
— Federal Navigation Center Line	□ Placement Area	Yellow	0' to -5'
— As-built Pipeline/Cable	□ Anchorage Area	Light Blue	-5' to -10'
..... Unconfirmed Pipeline/Cable	⊗ Obstruction Point	Blue	-10' to -20'
— Project Depth Contour	★ Beacon, General	Dark Blue	-20' to -30'
	◆ Red Navigation Buoy	Light Purple	-30' to -35'
	◆ Green Navigation Buoy	Dark Purple	-35' to -40'
	◆ Wrecks-Submerged	Pink	-40' to 45'
		White	-45' and below
		Blue	Borrow Area
		Yellow	Shoalest Sounding**



LWRP: 2.4  
 Gage Reading: BR:10.3 D:6.1 USED:10.0 NAVD  
 Sea Conditions: CALM  
 Vessel Name: M/V LAFOURCHE  
 Survey Type: CS  
 Sounding Frequency\*\*\*: HIGH

**NOTES:**  
 Horizontal Coordinate System:  
 North American Datum of 1983 (NAD83), projected to the State Plane Coordinate System (SPCS), Louisiana South Zone. Distance units in U.S. Survey Feet.  
 Vertical Datum:  
 Soundings are shown in feet and indicate depths below Low Water Reference Plane 2007 (NAVD).  
 Distances on the Mississippi River, above and below Head of Passes are shown at 1 mile intervals.  
 The location of navigation aids are based on and provided by the U.S. Coast Guard and USACE crew.  
 2015 Aerial Photography data source: NAIP, USDA-FSA-APFO Aerial Photography Field Office.  
 Reference is N.O.A.A. Navigation Chart No. 11370.  
 \*\* Shoalest Sounding per Quarter per Reach.  
 \*\*\* High frequency (200 kHz) survey data represents the first signal return at a sounding location and will include suspended solids, known as "fluff", if present. Low frequency (20 kHz) survey data normally penetrates through this "fluff" layer to depict elevations of consolidated bottom material. Low frequency accuracies may vary depending on channel conditions and bathymeter settings.

**Sheet Reference Number  
 4 of 97**