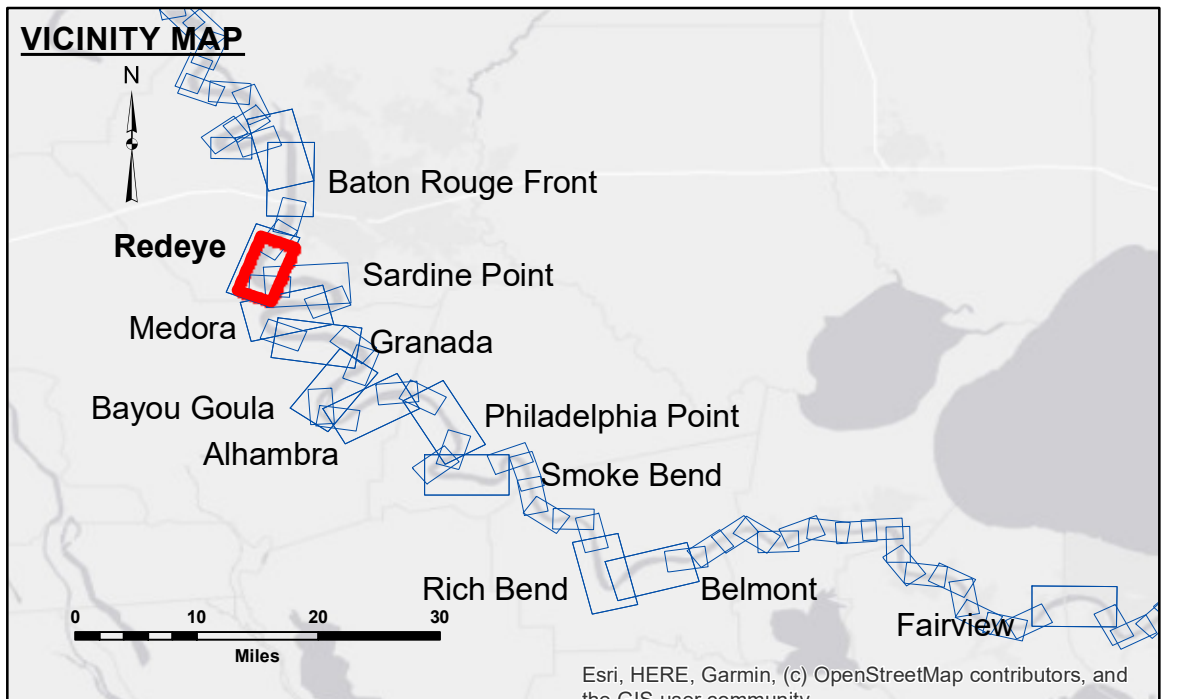


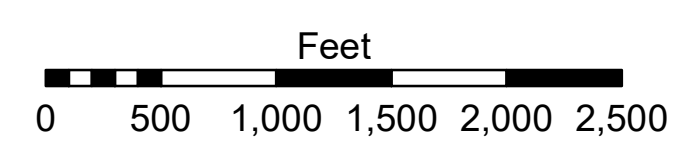
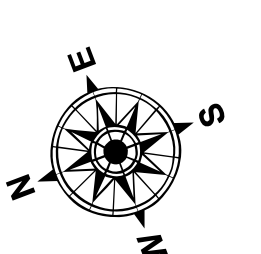
**DISCLAIMER**  
 The information depicted on this map represents the results of a survey conducted by the U.S. Army Corps of Engineers. The user is responsible for the accuracy, completeness, and reliability of the data for its intended use. The user is not to be held liable for any damages or losses resulting from the use of this information. The U.S. Army Corps of Engineers does not warrant the accuracy, completeness, or reliability of the data for any purpose other than its intended purpose. The user is responsible for the accuracy, completeness, and reliability of the data for its intended use. The user is not to be held liable for any damages or losses resulting from the use of this information. The U.S. Army Corps of Engineers does not warrant the accuracy, completeness, or reliability of the data for any purpose other than its intended purpose.

Submitted:	Reviewed By:	Checked By:
	DS/PS	AO
Recommended:	Checked By:	Checked By:
Chief Survey Section		AO
Approved:	Chief Waterways Maintenance Section	

**MISSISSIPPI RIVER - B.R. TO GULF  
 REDEYE CROSSING  
 MD\_04\_RED\_20211213\_CS  
 13 December 2021**



LEGEND		ELEVATION	
--- Federal Navigation Channel	○ Cable Area	Green	0' and above
— Federal Navigation Center Line	□ Placement Area	Yellow	0' to -5'
— As-built Pipeline/Cable	□ Anchorage Area	Orange	-5' to -10'
..... Unconfirmed Pipeline/Cable	⊗ Obstruction Point	Light Blue	-10' to -20'
— Project Depth Contour	★ Beacon, General	Blue	-20' to -30'
	◆ Wrecks-Submerged	Dark Blue	-30' to -35'
		Pink	-35' to -40'
		Light Purple	-40' to 45'
		White	-45' and below
		Blue	Borrow Area
		Yellow	Shoalest Sounding**



LWRP: 2.4  
 Gage Reading: BR:6.3D:3.5 USED:6.6 NAVD  
 Sea Conditions: SMOOTH  
 Vessel Name: LAFORUCHE  
 Survey Type: CS  
 Sounding Frequency\*\*\*: HIGH

**NOTES:**  
 Horizontal Coordinate System:  
 North American Datum of 1983 (NAD83), projected to the State Plane Coordinate System (SPCS), Louisiana South Zone. Distance units in U.S. Survey Feet.  
 Vertical Datum:  
 Soundings are shown in feet and indicate depths below Low Water Reference Plane 2007 (NAVD).  
 Distances on the Mississippi River, above and below Head of Passes are shown at 1 mile intervals.  
 The location of navigation aids are based on and provided by the U.S. Coast Guard and USACE crew.  
 2015 Aerial Photography data source: NAIP, USDA-FSA-APFO Aerial Photography Field Office.  
 Reference is N.O.A. Navigation Chart No. 11370.  
 \*\* Shoalest Sounding per Quarter per Reach.  
 \*\*\* High frequency (200 kHz) survey data represents the first signal return at a sounding location and will include suspended solids, known as "fluff", if present. Low frequency (20 kHz) survey data normally penetrates through this "fluff" layer to depict elevations of consolidated bottom material. Low frequency accuracies may vary depending on channel conditions and bathymeter settings.

**Sheet Reference Number  
 4 of 97**

Revision Number:  
 4-2-2019(4/2)