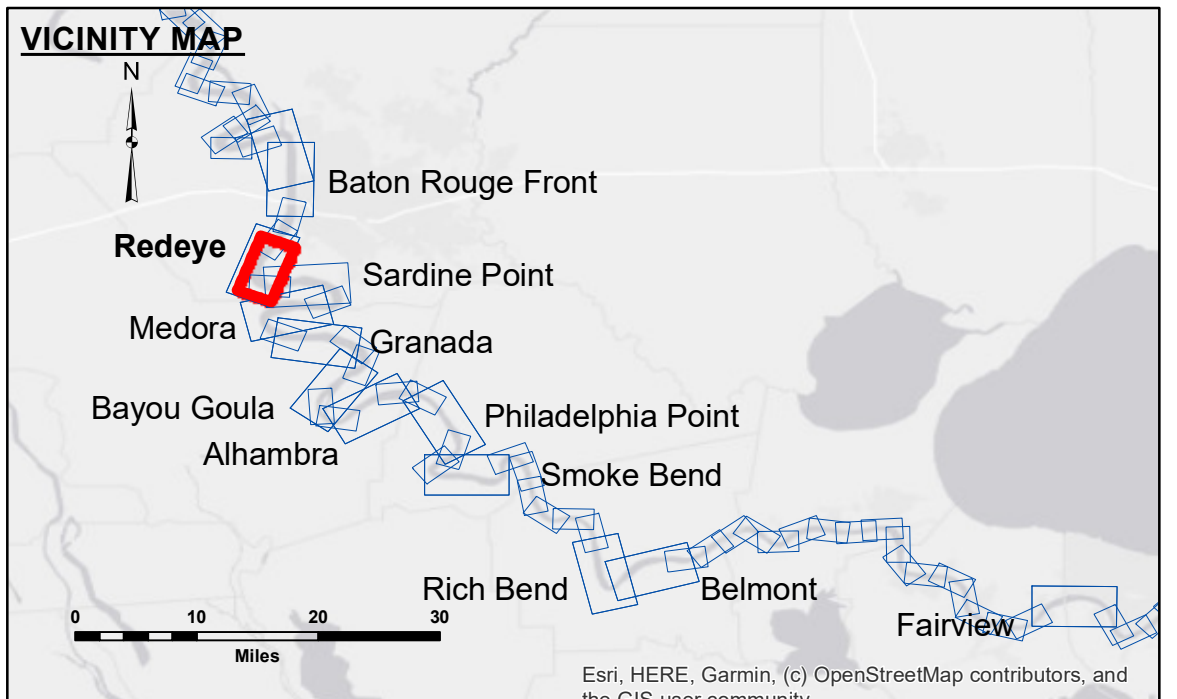


DIKE NO.	CONSTRUCTED DIKE ELEVATION
1	-5 NGVD
2	OR -7.6 LWRP
3	-5 NGVD
4	OR -7.6 LWRP
5	0 NGVD
6	OR -2.6 LWRP
7	0 NGVD
8	OR -2.6 LWRP
9	0 NGVD
10	OR -2.6 LWRP



LEGEND

--- Federal Navigation Channel	○ Cable Area	□ Borrow Area	■ 0' and above
— Federal Navigation Center Line	□ Placement Area	● Shoalest Sounding**	■ 0' to -5'
— As-built Pipeline/Cable	□ Anchorage Area	☆ Beacon, General	■ -5' to -10'
..... Unconfirmed Pipeline/Cable	⊗ Obstruction Point	◆ Red Navigation Buoy	■ -10' to -20'
— Project Depth Contour	⚓ Wrecks-Submerged	◆ Green Navigation Buoy	■ -20' to -30'
			■ -30' to -35'
			■ -35' to -40'
			■ -40' to 45'
			■ -45' and below

NOTES:

Horizontal Coordinate System:
North American Datum of 1983 (NAD83), projected to the State Plane Coordinate System (SPCS), Louisiana South Zone. Distance units in U.S. Survey Feet.

Vertical Datum:
Soundings are shown in feet and indicate depths below Low Water Reference Plane 2007 (NAVD).
Distances on the Mississippi River, above and below Head of Passes are shown at 1 mile intervals.

The location of navigation aids are base on and provided by the U.S. Coast Guard and USACE crew.
2015 Aerial Photography data source: NAIP, USDA-FSA-APFO Aerial Photography Field Office.

Reference is N.O.A. Navigation Chart No. 11370.

** Shoalest Sounding per Quarter per Reach.

*** High frequency (200 kHz) survey data represents the first signal return at a sounding location and will include suspended solids, known as "fluff", if present. Low frequency (20 kHz) survey data normally penetrates through this "fluff" layer to depict elevations of consolidated bottom material. Low frequency accuracies may vary depending on channel conditions and fathometer settings.

LWRP: 2.4
Gage Reading: BR:24.1D:15.9 USED:23.4 NAVD
Sea Conditions: SMOOTH
Vessel Name: OB189
Survey Type: CS
Sounding Frequency***: HIGH

0 500 1,000 1,500 2,000 2,500 Feet



Distribution Liability: The data represents the results of data collection/processing for a specific US Army Corps of Engineers project. It is only valid for its intended use, content, time and accuracy specifications. The user is responsible for the results of their use. The application of the data for other than its intended purpose is not supported. The US Army Corps of Engineers does not warrant the accuracy of the data for other than its intended purpose.

Data Collection: Hydrographic survey data is subject to change rapidly due to several factors including but not limited to changing hydrographic conditions when developing after the date of the survey. The US Army Corps of Engineers does not warrant the accuracy of the data for other than its intended purpose. The user is responsible for the results of their use. The application of the data for other than its intended purpose is not supported.

Submitted:	Surveyed By:	Checked By:
Recommended:	RYLAND/ADAMS	AO
Approved:	Chief, Survey Section	AO
	Chief, Waterways Maintenance Section	

**MISSISSIPPI RIVER - B.R. TO GULF
REDEYE CROSSING
MD_04_RED_20220114_CS
14 January 2022**

**Sheet Reference Number
4 of 97**

Revision Number:
4-2-2024/04/20