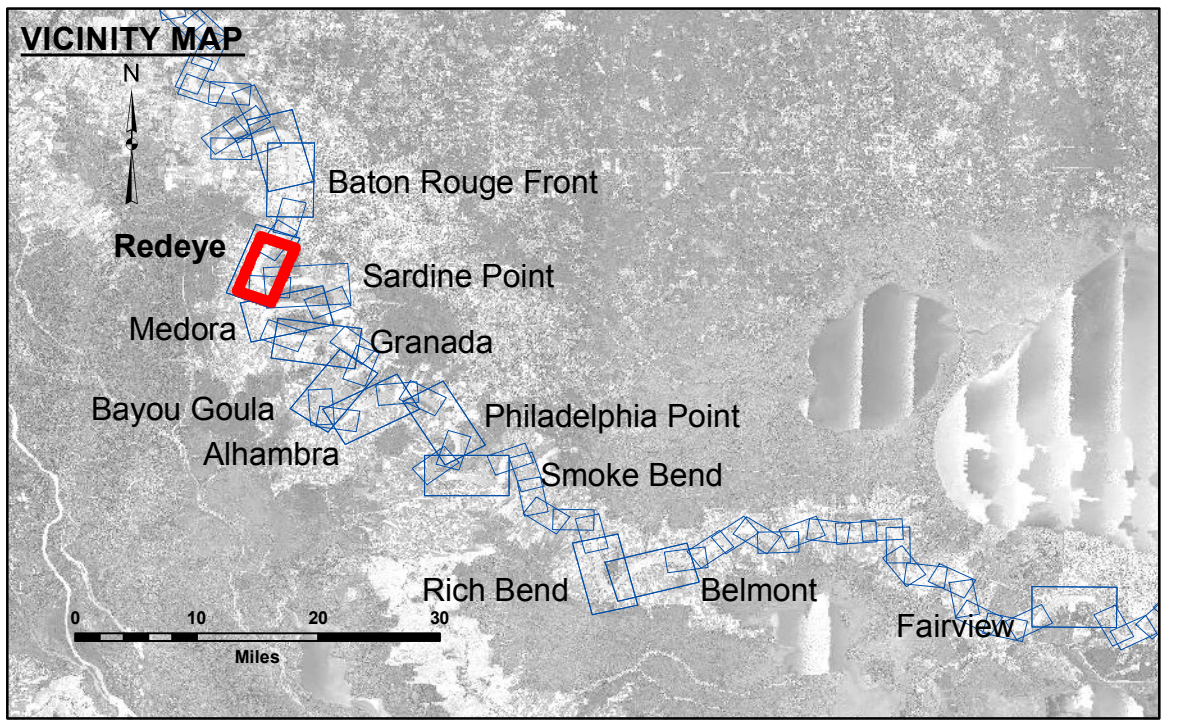


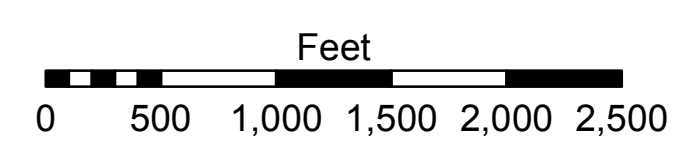
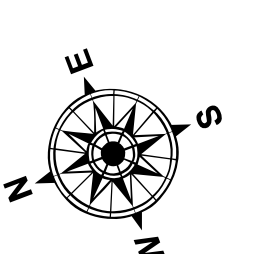
DISCLAIMER
 The information depicted on this map represents the results of a survey conducted by the U.S. Army Corps of Engineers. The user is responsible for the accuracy, completeness, and reliability of the data for their intended purpose. The user is not to be held liable for any damages or losses resulting from the use of this information. The information is provided for informational purposes only and is not to be used for any other purpose. The user is responsible for the accuracy, completeness, and reliability of the data for their intended purpose. The user is not to be held liable for any damages or losses resulting from the use of this information. The information is provided for informational purposes only and is not to be used for any other purpose.

DIKE NO.	CONSTRUCTED DIKE ELEVATION
1	-5 NGVD
2	OR -7.6 LWRP
3	OR -7.6 LWRP
4	OR -2.6 LWRP
5	OR -2.6 LWRP
6	OR -2.6 LWRP

Submitted:	RYLAND/ADAMS
Recommended:	JH
Approved:	JH



LEGEND	
--- Federal Navigation Channel	○ Cable Area
— Federal Navigation Center Line	□ Placement Area
— As-built Pipeline/Cable	□ Anchorage Area
..... Unconfirmed Pipeline/Cable	⊗ Obstruction Point
— Project Depth Contour	✈ Wrecks-Submerged
□ Borrow Area	★ Beacon, General
● Shoalest Sounding**	◆ Red Navigation Buoy
○ Beacon, General	◆ Green Navigation Buoy



LWRP: 2.4
 Gage Reading: BR:9.0 D:4.8 USED:8.60 NAVD
 Sea Conditions: CALM
 Vessel Name: M/V OB 189
 Survey Type: CONDITION
 Sounding Frequency***: HIGH

NOTES:
 Horizontal Coordinate System:
 North American Datum of 1983 (NAD83), projected to the State Plane Coordinate System (SPCS), Louisiana South Zone. Distance units in U.S. Survey Feet.
 Vertical Datum:
 Soundings are shown in feet and indicate depths below Low Water Reference Plane 2007 (NAVD).
 Distances on the Mississippi River, above and below Head of Passes are shown at 1 mile intervals.
 The location of navigation aids are based on and provided by the U.S. Coast Guard and USACE crew.
 2015 Aerial Photography data source: NAIP, USDA-FSA-APFO Aerial Photography Field Office.
 Reference is N.O.A. Navigation Chart No. 11370.
 ** Shoalest Sounding per Quarter per Reach.
 *** High frequency (200 kHz) survey data represents the first signal return at a sounding location and will include suspended solids, known as "fluff", if present. Low frequency (20 kHz) survey data normally penetrates through this "fluff" layer to depict elevations of consolidated bottom material. Low frequency accuracies may vary depending on channel conditions and bathymeter settings.

**MISSISSIPPI RIVER - B.R. TO GULF
 REDEYE CROSSING
 MD_04_RED_20220802_CS
 02 August 2022**

**Sheet Reference Number
 4 of 97**