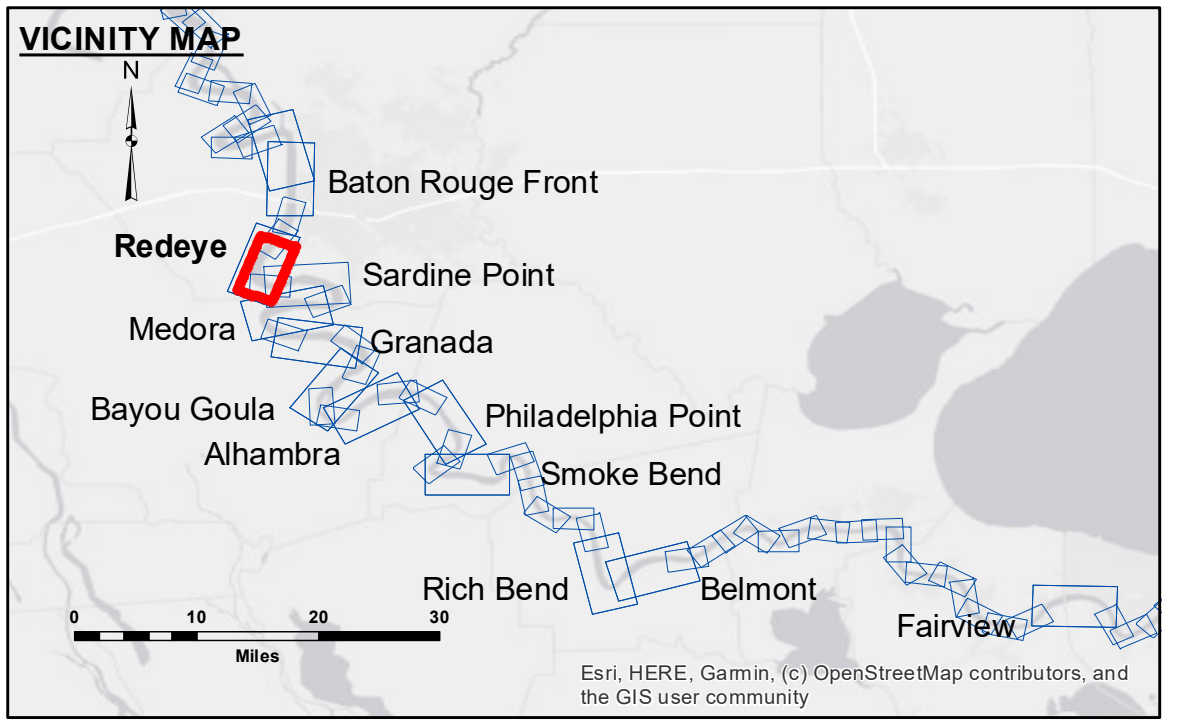
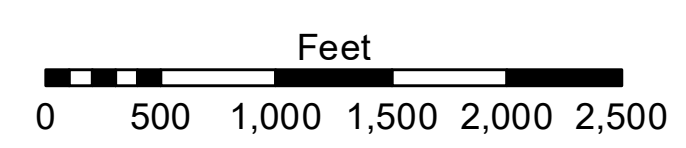
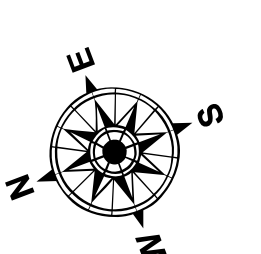


DIKE NO.	CONSTRUCTED DIKE ELEVATION
1	-5 NGVD OR -7.6 LWRP
2	-5 NGVD OR -7.6 LWRP
3	0 NGVD OR -2.6 LWRP
4	0 NGVD OR -2.6 LWRP
5	0 NGVD OR -2.6 LWRP
6	0 NGVD OR -2.6 LWRP



LEGEND	
--- Federal Navigation Channel	● Cable Area
— Federal Navigation Center Line	■ Placement Area
— As-built Pipeline/Cable	□ Anchorage Area
..... Unconfirmed Pipeline/Cable	⊗ Obstruction Point
— Project Depth Contour	✈ Wrecks-Submerged
□ Borrow Area	★ Beacon, General
● Shoalest Sounding**	◆ Red Navigation Buoy
◆ Green Navigation Buoy	



LWRP: 2.4
 Gage Reading: BR:30.2 D:20.1 USED:29.40 NAVD
 Sea Conditions: CALM
 Vessel Name: M/V LAFOURCHE
 Survey Type: CS
 Sounding Frequency***: HIGH

NOTES:
 Horizontal Coordinate System:
 North American Datum of 1983 (NAD83), projected to the State Plane
 Coordinate System (SPCS), Louisiana South Zone. Distance units in U.S. Survey Feet.
 Vertical Datum:
 Soundings are shown in feet and indicate depths below Low Water Reference Plane 2007 (NAVD).
 Distances on the Mississippi River, above and below Head of Passes are shown
 at 1 mile intervals.
 The location of navigation aids are base on and provided by the U.S. Coast Guard and USACE crew.
 2015 Aerial Photography data source: NAIP, USDA-FSA-APFO Aerial Photography Field Office.
 Reference is N.O.A.A. Navigation Chart No. 11370.
 ** Shoalest Sounding per Quarter per Reach.
 *** High frequency (200 kHz) survey data represents the first signal return at a sounding
 location and will include suspended solids, known as "fluff", if present. Low frequency (20 kHz)
 survey data normally penetrates through this "fluff" layer to depict elevations of consolidated bottom
 material. Low frequency accuracies may vary depending on channel conditions and bathymeter
 settings.



DISTRIBUTION LIABILITY: The data represents the results of data collection for a specific US Army Corps of Engineers project. It is not intended for use in any other project or for any other purpose. The user is responsible for the accuracy, completeness, and timeliness of the data. The user is responsible for the accuracy, completeness, and timeliness of the data. The user is responsible for the accuracy, completeness, and timeliness of the data. The user is responsible for the accuracy, completeness, and timeliness of the data.

Submitted:	RYLAND/SIMMONS
Recommended:	BD
Approved:	ADJH

**MISSISSIPPI RIVER - B.R. TO GULF
 REDEYE CROSSING
 MD_04_RED_20230328_CS
 28 March 2023**

**Sheet Reference Number
 4 of 97**