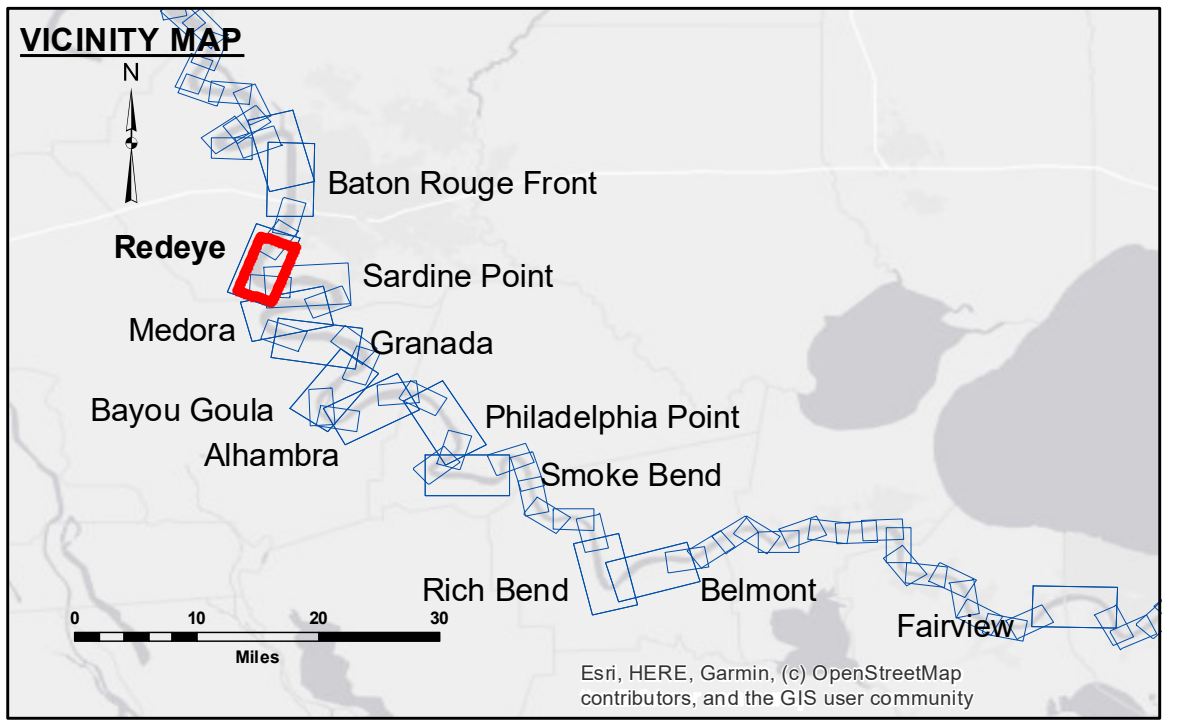
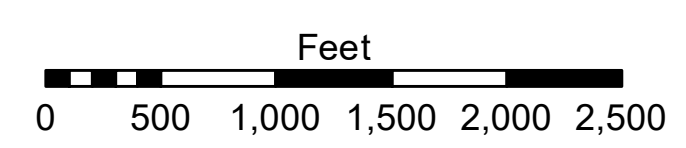
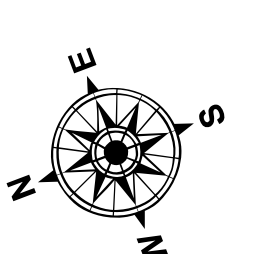


**DISCLAIMER:** The United States Government furnishes these data and the recipient accepts and uses them with the express understanding that the data are not to be used for any purpose other than that for which they were prepared. The user is responsible for the results of any use of the data for other than its intended purpose. Data contained in this report are subject to change without notice. The Corps of Engineers does not warrant the accuracy of the data for any purpose other than that for which they were prepared. The information depicted on this map represents the results of a survey conducted on the date of the survey and is not to be used for any purpose other than that for which it was prepared.

Submitted:	Surveyed By:	Checked By:
Recommended:	RYLAND/SIMMONS	AD/JH
Approved:	Plotted By:	
	BD	



LEGEND	
--- Federal Navigation Channel	0' and above
— Federal Navigation Center Line	0' to -5'
— As-built Pipeline/Cable	-5' to -10'
..... Unconfirmed Pipeline/Cable	-10' to -20'
— Project Depth Contour	-20' to -30'
○ Cable Area	-30' to -35'
□ Placement Area	-35' to -40'
□ Anchorage Area	-40' to 45'
⊗ Obstruction Point	-45' and below
★ Beacon, General	
◆ Red Navigation Buoy	
◆ Green Navigation Buoy	
□ Borrow Area	
● Shoalest Sounding**	
★ Beacon, General	
◆ Red Navigation Buoy	
◆ Green Navigation Buoy	



LWRP: 2.4  
 Gage Reading: RTK: 4.22 NAVD AVG  
 Sea Conditions: CALM  
 Vessel Name: M/ LAFOURCHE  
 Survey Type: CS  
 Sounding Frequency\*\*\*: HIGH

**NOTES:**  
 Horizontal Coordinate System:  
 North American Datum of 1983 (NAD83), projected to the State Plane Coordinate System (SPCS), Louisiana South Zone. Distance units in U.S. Survey Feet.  
 Vertical Datum:  
 Soundings are shown in feet and indicate depths below Low Water Reference Plane 2007 (NAVD).  
 Distances on the Mississippi River, above and below Head of Passes are shown at 1 mile intervals.  
 The location of navigation aids are based on and provided by the U.S. Coast Guard and USACE crew.  
 2015 Aerial Photography data source: NAIP, USDA-FSA-APFO Aerial Photography Field Office.  
 Reference is N.O.A. Navigation Chart No. 11370.  
 \*\* Shoalest Sounding per Quarter per Reach.  
 \*\*\* High frequency (200 kHz) survey data represents the first signal return at a sounding location and will include suspended solids, known as "fluff", if present. Low frequency (20 kHz) survey data normally penetrates through this "fluff" layer to depict elevations of consolidated bottom material. Low frequency accuracies may vary depending on channel conditions and fathometer settings.

**MISSISSIPPI RIVER - B.R. TO GULF  
 REDEYE CROSSING  
 MD\_04\_RED\_20231107\_CS  
 07 November 2023**

**Sheet  
 Reference  
 Number  
 4 of 97**