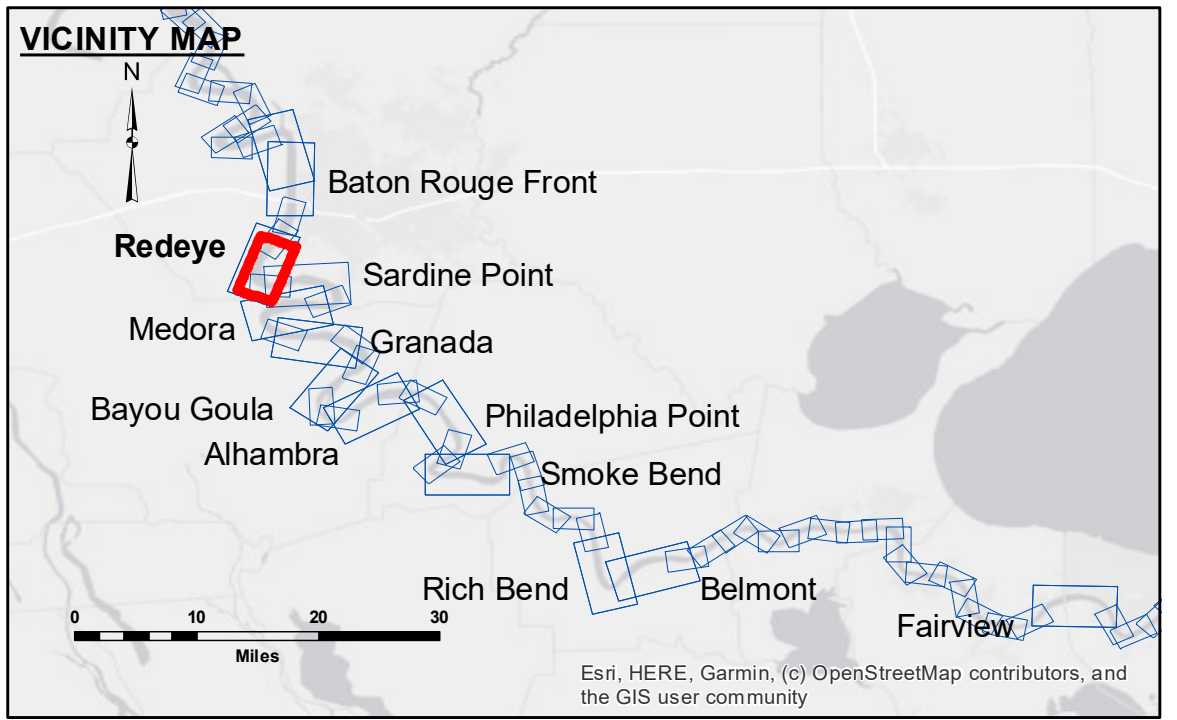
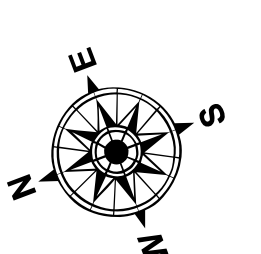


DIKE NO.	CONSTRUCTED DIKE ELEVATION
1	-5 NGVD OR -7.6 LWRP
2	-5 NGVD OR -7.6 LWRP
3	0 NGVD OR -2.6 LWRP
4	0 NGVD OR -2.6 LWRP
5	0 NGVD OR -2.6 LWRP
6	0 NGVD OR -2.6 LWRP

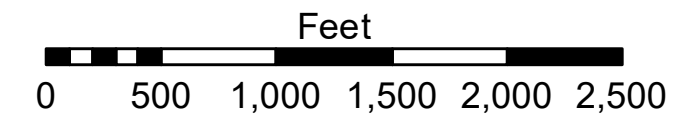


**LEGEND**

--- Federal Navigation Channel	○ Cable Area	□ Borrow Area	0' and above
— Federal Navigation Center Line	▭ Placement Area	● Shoalest Sounding**	0' to -5'
— As-built Pipeline/Cable	⊗ Anchorage Area	☆ Beacon, General	-5' to -10'
⋯ Unconfirmed Pipeline/Cable	⊗ Obstruction Point	◆ Red Navigation Buoy	-10' to -20'
— Project Depth Contour	⚓ Wrecks-Submerged	◆ Green Navigation Buoy	-20' to -30'
			-30' to -35'
			-35' to -40'
			-40' to 45'
			-45' and below



LWRP: 2.4  
 Gage Reading: RTK; 6.30 NAVD AVG.  
 Sea Conditions: CALM  
 Vessel Name: M/V MLAFOURCHE  
 Survey Type: CS  
 Sounding Frequency\*\*\*: HIGH



**NOTES:**

Horizontal Coordinate System:  
 North American Datum of 1983 (NAD83), projected to the State Plane Coordinate System (SPCS), Louisiana South Zone. Distance units in U.S. Survey Feet.

Vertical Datum:  
 Soundings are shown in feet and indicate depths below Low Water Reference Plane 2007 (NAVD).  
 Distances on the Mississippi River, above and below Head of Passes are shown at 1 mile intervals.

The location of navigation aids are base on and provided by the U.S. Coast Guard and USACE crew.  
 2015 Aerial Photography data source: NAIP, USDA-FSA-APFO Aerial Photography Field Office.

Reference is N.O.A.A. Navigation Chart No. 11370.

\*\* Shoalest Sounding per Quarter per Reach.

\*\*\* High frequency (200 kHz) survey data represents the first signal return at a sounding location and will include suspended solids, known as "fluff", if present. Low frequency (20 kHz) survey data normally penetrates through this "fluff" layer to depict elevations of consolidated bottom material. Low frequency accuracies may vary depending on channel conditions and fathometer settings.



**DISCLAIMER:** The United States Government furnishes these data and the recipient accepts and uses them with the express understanding that the data are not intended for use in any other manner than that for which they were prepared. The user is responsible for the results of any use of the data for other than its intended purpose. The application of the data for other than its intended purpose may result in injury or death. The user is responsible for the results of any use of the data for other than its intended purpose. The user is responsible for the results of any use of the data for other than its intended purpose. The user is responsible for the results of any use of the data for other than its intended purpose.

Submitted:	Surveyed By:	Checked By:
Recommended:	RYLAND/SIMMONS	AD/JH
Approved:	Plotted By:	
	BD	

**MISSISSIPPI RIVER - B.R. TO GULF**  
**REDEYE CROSSING**  
**MD\_04\_RED\_20240108\_CS**  
**08 January 2024**

**Sheet Reference Number**  
**4 of 97**

Revision Number:  
 4.2-20240420