

DIKE NO.	CONSTRUCTED DIKE ELEVATION
1	-5 NGVD
2	OR -7.6 LWRP
3	OR -7.6 LWRP
4	OR -2.6 LWRP
5	OR -2.6 LWRP
6	OR -2.6 LWRP

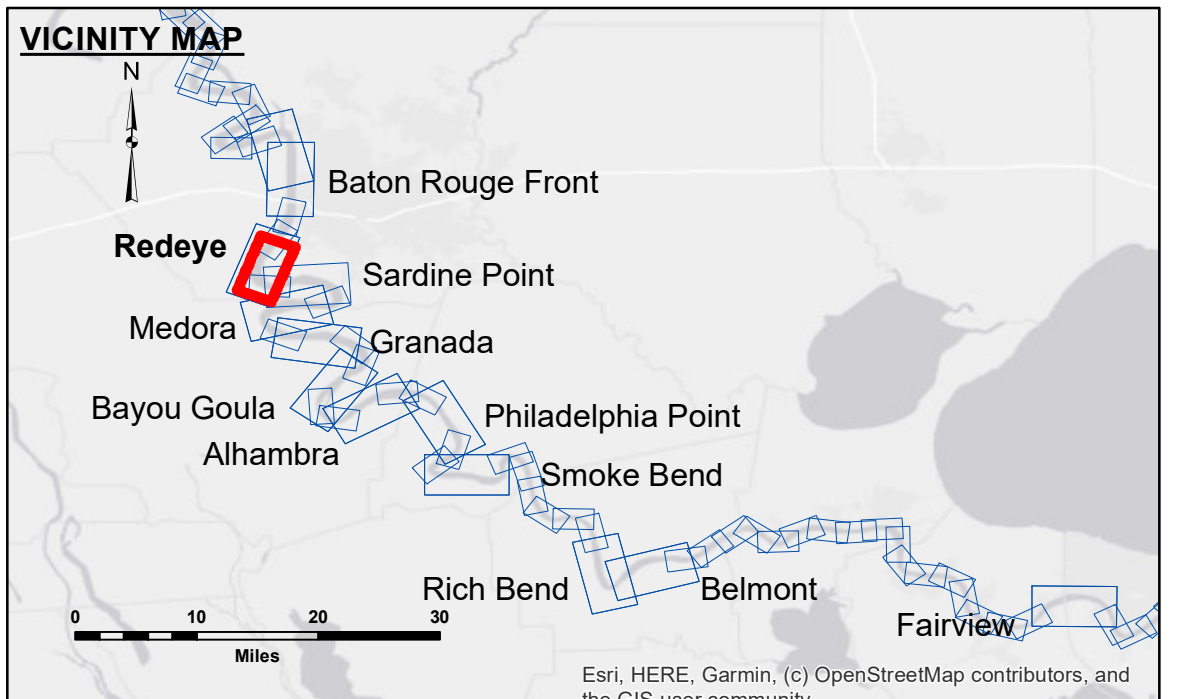


**Distribution Liability:** The data represents the results of data collection for a specific US Army Corps of Engineers project. It is only valid for its intended use, content, time and accuracy specifications. The user is responsible for the results and the application of the data for other than its intended purpose.

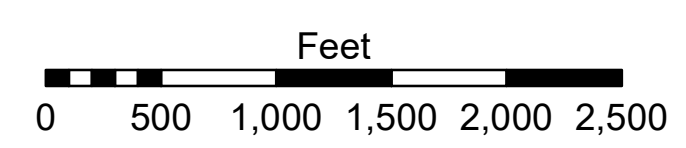
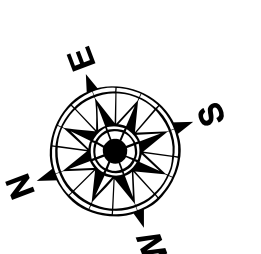
**Data Constraints:** Hydrographic survey data is subject to change rapidly due to several factors including but not limited to changing hydrological conditions which develop after the date of the survey. The US Army Corps of Engineers accepts no responsibility for changes in the hydrological conditions which develop after the date of the survey. The information depicted on this map represents the results of a survey conducted at the time the data was collected and is not intended to represent the general condition existing at that time.

Submitted:	Surveyed By: RYLAND/SIMMONS
Recommender: Chief Survey Section	Plotted By: JH
Approved: Chief Waterways Maintenance Section	Checked By: JH

**MISSISSIPPI RIVER - B.R. TO GULF  
REDEYE CROSSING  
MD\_04\_RED\_20240320\_CS  
20 March 2024**



LEGEND	
--- Federal Navigation Channel	0' and above
— Federal Navigation Center Line	0' to -5'
— As-built Pipeline/Cable	-5' to -10'
..... Unconfirmed Pipeline/Cable	-10' to -20'
— Project Depth Contour	-20' to -30'
○ Cable Area	-30' to -35'
□ Placement Area	-35' to -40'
□ Anchorage Area	-40' to 45'
⊗ Obstruction Point	-45' and below
★ Beacon, General	
◆ Red Navigation Buoy	
◆ Green Navigation Buoy	
□ Borrow Area	
● Shoalest Sounding**	
★ Beacon, General	
◆ Red Navigation Buoy	
◆ Green Navigation Buoy	



LWRP: 2.4  
 Gage Reading: BR:22.6 D:13.8 USED: 21.90 NAVD88  
 Sea Conditions: CALM  
 Vessel Name: LAFOURCHE  
 Survey Type: CS  
 Sounding Frequency\*\*\*: HIGH

**NOTES:**

Horizontal Coordinate System: North American Datum of 1983 (NAD83), projected to the State Plane Coordinate System (SPCS), Louisiana South Zone. Distance units in U.S. Survey Feet.

Vertical Datum: Soundings are shown in feet and indicate depths below Low Water Reference Plane 2007 (NAVD).

Distances on the Mississippi River, above and below Head of Passes are shown at 1 mile intervals.

The location of navigation aids are based on and provided by the U.S. Coast Guard and USACE crew.

2015 Aerial Photography data source: NAIP, USDA-FSA-APFO Aerial Photography Field Office.

Reference is N.O.A. Navigation Chart No. 11370.

\*\* Shoalest Sounding per Quarter per Reach.

\*\*\* High frequency (200 kHz) survey data represents the first signal return at a sounding location and will include suspended solids, known as "fluff", if present. Low frequency (20 kHz) survey data normally penetrates through this "fluff" layer to depict elevations of consolidated bottom material. Low frequency accuracies may vary depending on channel conditions and fathometer settings.

**Sheet Reference Number  
4 of 97**

Revision Number: 4-2-2024(04/2)