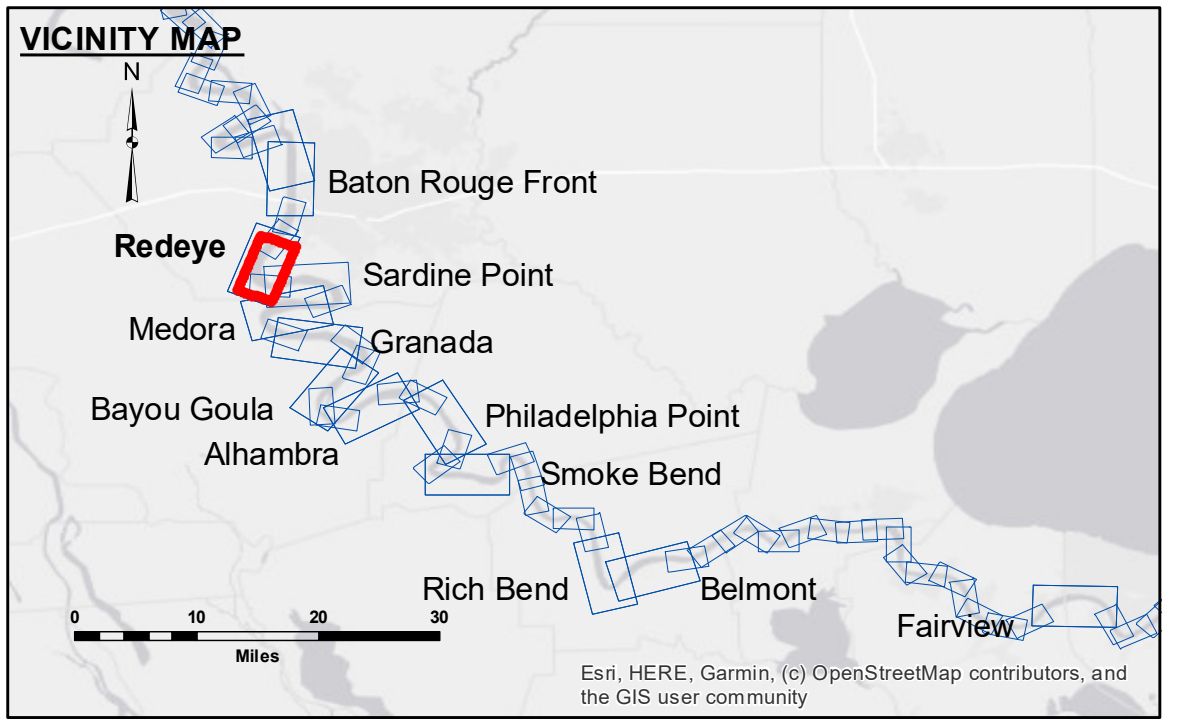


DISCLAIMER: The United States Government furnishes these data and the recipient accepts and uses them with the express understanding that the Government makes no warranty, expressed or implied, as to the accuracy, completeness, reliability, usability or suitability for any particular purpose of the data. The user is responsible for the results obtained from the application of the data for other than its intended purpose. Data contained in this survey data is subject to change without notice. The user is responsible for the results obtained from the application of the data for other than its intended purpose. The information depicted on this map represents the results of a survey conducted on the ground and is not intended to represent the general condition existing at that time.

Submitted:	Surveyed By:	Checked By:
Recommended:	RYLAND/SIMMONS	AD/JH
Approved:	Plotted By:	
	BD	

**MISSISSIPPI RIVER - B.R. TO GULF
REDEYE CROSSING
MD_04_RED_20240529_CS
29 May 2024**



LEGEND		0' and above	
--- Federal Navigation Channel	○ Cable Area	■ 0' to -5'	
— Federal Navigation Center Line	□ Placement Area	■ -5' to -10'	
— As-built Pipeline/Cable	□ Anchorage Area	■ -10' to -20'	
..... Unconfirmed Pipeline/Cable	⊗ Obstruction Point	■ -20' to -30'	
— Project Depth Contour	★ Beacon, General	■ -30' to -35'	
	◆ Red Navigation Buoy	■ -35' to -40'	
	◆ Wrecks-Submerged	■ -40' to 45'	
		■ -45' and below	
	□ Borrow Area		
	● Shoalest Sounding**		

NOTES:
 Horizontal Coordinate System:
 North American Datum of 1983 (NAD83), projected to the State Plane Coordinate System (SPCS), Louisiana South Zone. Distance units in U.S. Survey Feet.
 Vertical Datum:
 Soundings are shown in feet and indicate depths below Low Water Reference Plane 2007 (NAVD).
 Distances on the Mississippi River, above and below Head of Passes are shown at 1 mile intervals.
 The location of navigation aids are based on and provided by the U.S. Coast Guard and USACE crew.
 2015 Aerial Photography data source: NAIP, USDA-FSA-APFO Aerial Photography Field Office.
 Reference is N.O.A.A. Navigation Chart No. 11370.
 ** Shoalest Sounding per Quarter per Reach.
 *** High frequency (200 kHz) survey data represents the first signal return at a sounding location and will include suspended solids, known as "fluff", if present. Low frequency (20 kHz) survey data normally penetrates through this "fluff" layer to depict elevations of consolidated bottom material. Low frequency accuracies may vary depending on channel conditions and fathometer settings.

**Sheet Reference Number
4 of 97**

Revision Number:
4.2-20210429