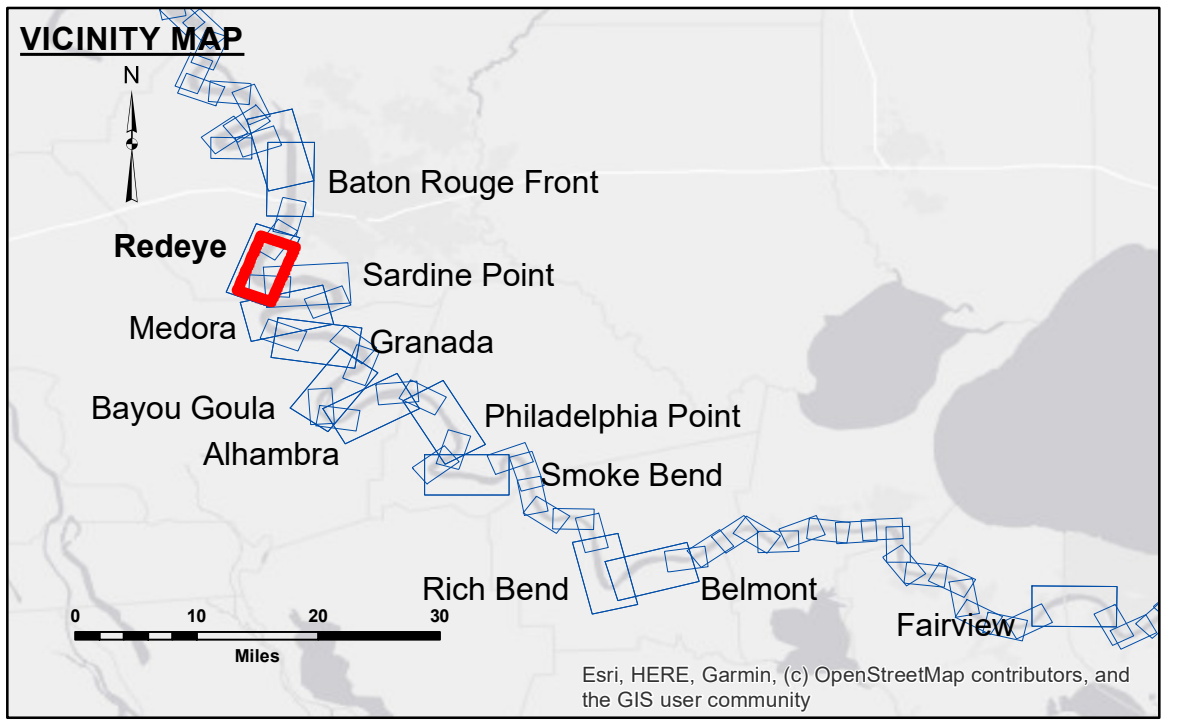
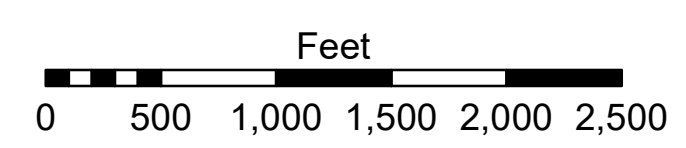
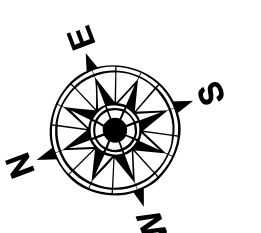


| DIKE NO. | CONSTRUCTED DIKE ELEVATION |
|----------|----------------------------|
| 1 | -5 NGVD |
| 2 | OR -7.6 LWRP |
| 3 | -5 NGVD |
| 4 | OR -7.6 LWRP |
| 5 | 0 NGVD |
| 6 | OR -2.6 LWRP |



| LEGEND | |
|----------------------------------|-------------------------|
| --- Federal Navigation Channel | ● Cable Area |
| — Federal Navigation Center Line | ■ Placement Area |
| — As-built Pipeline/Cable | □ Anchorage Area |
| Unconfirmed Pipeline/Cable | ⊗ Obstruction Point |
| — Project Depth Contour | ✈ Wrecks-Submerged |
| □ Borrow Area | ★ Beacon, General |
| ● Shoalest Sounding** | ◆ Red Navigation Buoy |
| ★ Beacon, General | ◆ Green Navigation Buoy |

| | |
|----------------|--------------|
| 0' and above | 0' to -5' |
| -5' to -10' | -10' to -20' |
| -20' to -30' | -30' to -35' |
| -35' to -40' | -40' to -45' |
| -45' and below | |



LWRP: 2.4
 Gage Reading: BR:23.6 D:15.1 USED:22.90 NAVD
 Sea Conditions: CALM
 Vessel Name: M/V LAFORCHE
 Survey Type: CS
 Sounding Frequency***: HIGH

NOTES:
 Horizontal Coordinate System:
 North American Datum of 1983 (NAD83), projected to the State Plane Coordinate System (SPCS), Louisiana South Zone. Distance units in U.S. Survey Feet.
 Vertical Datum:
 Soundings are shown in feet and indicate depths below Low Water Reference Plane 2007 (NAVD).
 Distances on the Mississippi River, above and below Head of Passes are shown at 1 mile intervals.
 The location of navigation aids are base on and provided by the U.S. Coast Guard and USACE crew.
 2015 Aerial Photography data source: NAIP, USDA-FSA-APFO Aerial Photography Field Office.
 Reference is N.O.A. Navigation Chart No. 11370.
 ** Shoalest Sounding per Quarter per Reach.
 *** High frequency (200 kHz) survey data represents the first signal return at a sounding location and will include suspended solids, known as "fluff", if present. Low frequency (20 kHz) survey data normally penetrates through this "fluff" layer to depict elevations of consolidated bottom material. Low frequency accuracies may vary depending on channel conditions and fathometer settings.



Distribution Liability: The data represents the results of data collection/processing for a specific US Army Corps of Engineers project. It is only valid for its intended use, content, time and accuracy specifications. The user is responsible for the results of their use. The user's application of the data for other than its intended purpose. Data Constants Hydrographic survey data is subject to change rapidly due to several factors including but not limited to changing hydrographic conditions which develop after the date of the survey. The US Army Corps of Engineers accepts no responsibility for changes in the hydrographic conditions which develop after the date of the survey. The information depicted on this map represents the results of a survey conducted at the time the map was prepared. It is not intended to represent the general condition existing at that time.

| U.S. ARMY CORPS OF ENGINEERS NEW ORLEANS DISTRICT | | |
|--|--------------------------------------|---------------------|
| Submitted: | Surveyed By: RYLAND/SIMMONS | Plotted By: BD |
| Recommended: | Chief, Survey Section | Checked By: AOJH |
| Approved: | Chief, Waterways Maintenance Section | |

**MISSISSIPPI RIVER - B.R. TO GULF
 REDEYE CROSSING
 MD_04_RED_20250114_CS
 14 January 2025**

**Sheet Reference Number
 4 of 97**

Revision Number:
 4-2-2024(4/2)