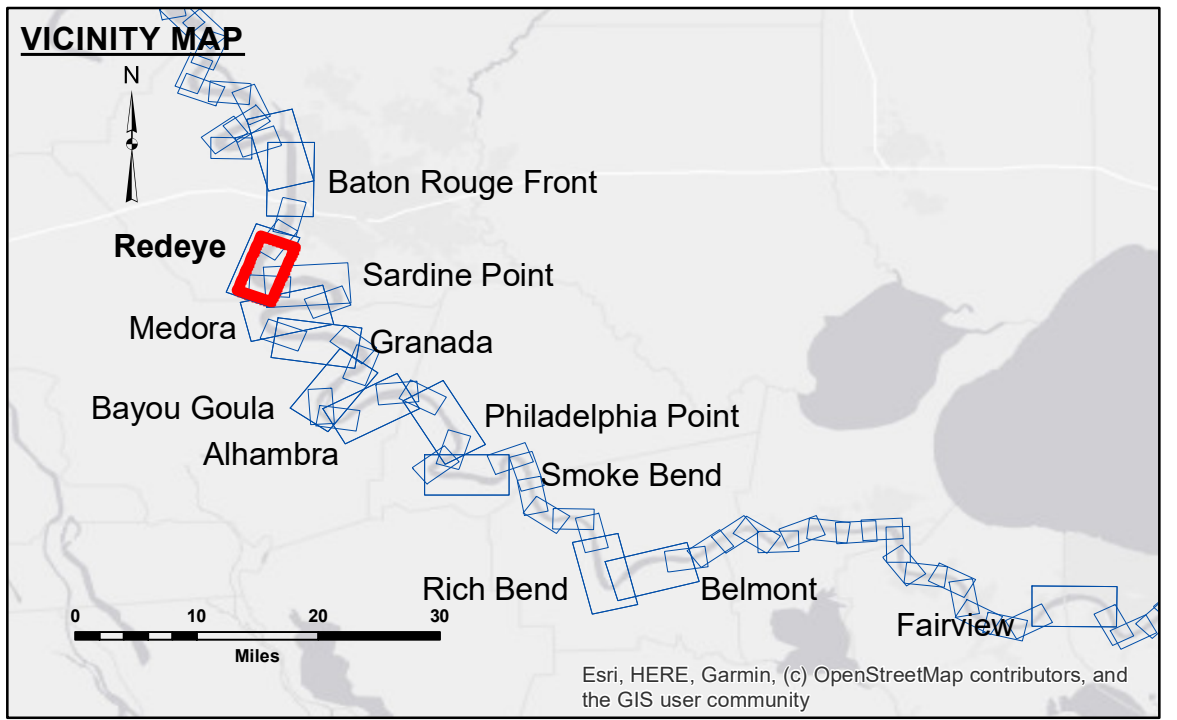
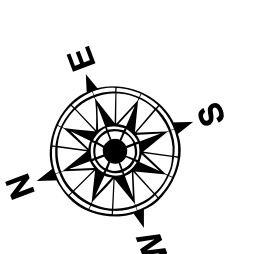


DIKE NO.	CONSTRUCTED DIKE ELEVATION
1	-5 NGVD
2	OR -7.6 LWRP
3	-5 NGVD
4	OR -7.6 LWRP
5	0 NGVD
6	OR -2.6 LWRP
7	0 NGVD
8	OR -2.6 LWRP
9	0 NGVD
10	OR -2.6 LWRP

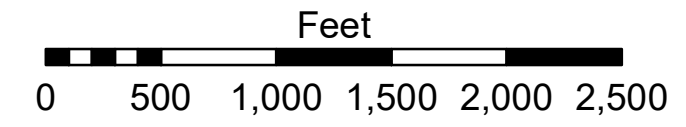


LEGEND	
--- Federal Navigation Channel	● Cable Area
— Federal Navigation Center Line	■ Placement Area
— As-built Pipeline/Cable	□ Anchorage Area
..... Unconfirmed Pipeline/Cable	⊗ Obstruction Point
— Project Depth Contour	✈ Wrecks-Submerged
□ Borrow Area	★ Beacon, General
● Shoalest Sounding**	◆ Red Navigation Buoy
★ Beacon, General	◆ Green Navigation Buoy

0'	and above
0'	to -5'
-5'	to -10'
-10'	to -20'
-20'	to -30'
-30'	to -35'
-35'	to -40'
-40'	to -45'
-45'	and below



LWRP: 2.4
 Gage Reading: BR:14.8 D:8.3 USED:14.30 NAVD
 Sea Conditions: CALM
 Vessel Name: M/V LAFORCHE
 Survey Type: CS
 Sounding Frequency***: HIGH



NOTES:

Horizontal Coordinate System:
 North American Datum of 1983 (NAD83), projected to the State Plane Coordinate System (SPCS), Louisiana South Zone. Distance units in U.S. Survey Feet.

Vertical Datum:
 Soundings are shown in feet and indicate depths below Low Water Reference Plane 2007 (NAVD).

Distances on the Mississippi River, above and below Head of Passes are shown at 1 mile intervals.

The location of navigation aids are based on and provided by the U.S. Coast Guard and USACE crew.

2015 Aerial Photography data source: NAIP, USDA-FSA-APFO Aerial Photography Field Office.

Reference is N.O.A. Navigation Chart No. 11370.

** Shoalest Sounding per Quarter per Reach.

*** High frequency (200 kHz) survey data represents the first signal return at a sounding location and will include suspended solids, known as "fluff", if present. Low frequency (20 kHz) survey data normally penetrates through this "fluff" layer to depict elevations of consolidated bottom material. Low frequency accuracies may vary depending on channel conditions and fathometer settings.

U.S. ARMY CORPS OF ENGINEERS NEW ORLEANS DISTRICT		
Submitted:	Surveyed By: RYLAND/SIMMONS	Plotted By: BD
Recommended:	Checked By: AD/JH	Checked By: AD/JH
Approved:	Chief, Waterways Maintenance Section	

**MISSISSIPPI RIVER - B.R. TO GULF
 REDEYE CROSSING
 MD_04_RED_20250130_CS
 30 January 2025**

**Sheet
 Reference
 Number
 4 of 97**

Revision Number:
 4-2-2024(4/2)



DISCLAIMER:

The United States Government furnishes these data and the recipient accepts and uses them with the express understanding that the data are not to be used for any purpose other than that for which they were prepared, and that the user is responsible for the results. The user is responsible for the results. The user is responsible for the results. The user is responsible for the results.

The information depicted on this map represents the results of a survey conducted on or about the date of the survey. The user is responsible for the results of the survey. The user is responsible for the results of the survey. The user is responsible for the results of the survey.