



DISTRIBUTION STATEMENT

Access Categories: The United States Government furnishes this information to the United States Government, its employees, contractors, and subcontractors on a "need to know" basis. This information is not to be released to the public, nor is it to be furnished to other personnel of the United States Government, its employees, contractors, and subcontractors, without the express understanding that the U.S. Government makes no warranty, endorsement, or implied endorsement of accuracy, completeness, or reliability of the information. The information and data it has furnished. The United States shall be held harmless for any use of the information and data that was made thereof. Times data belong to the Government. Therefore the recipient fully agrees not to represent these data in any way as other than the property of the Government. The recipient shall ensure that these data do not leave without transferring this disclaimer.

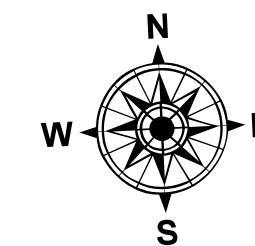
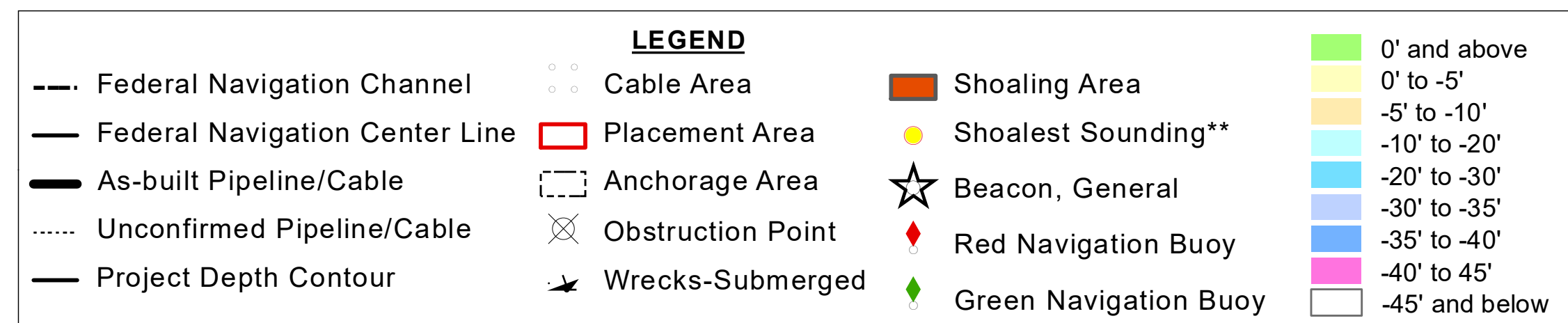
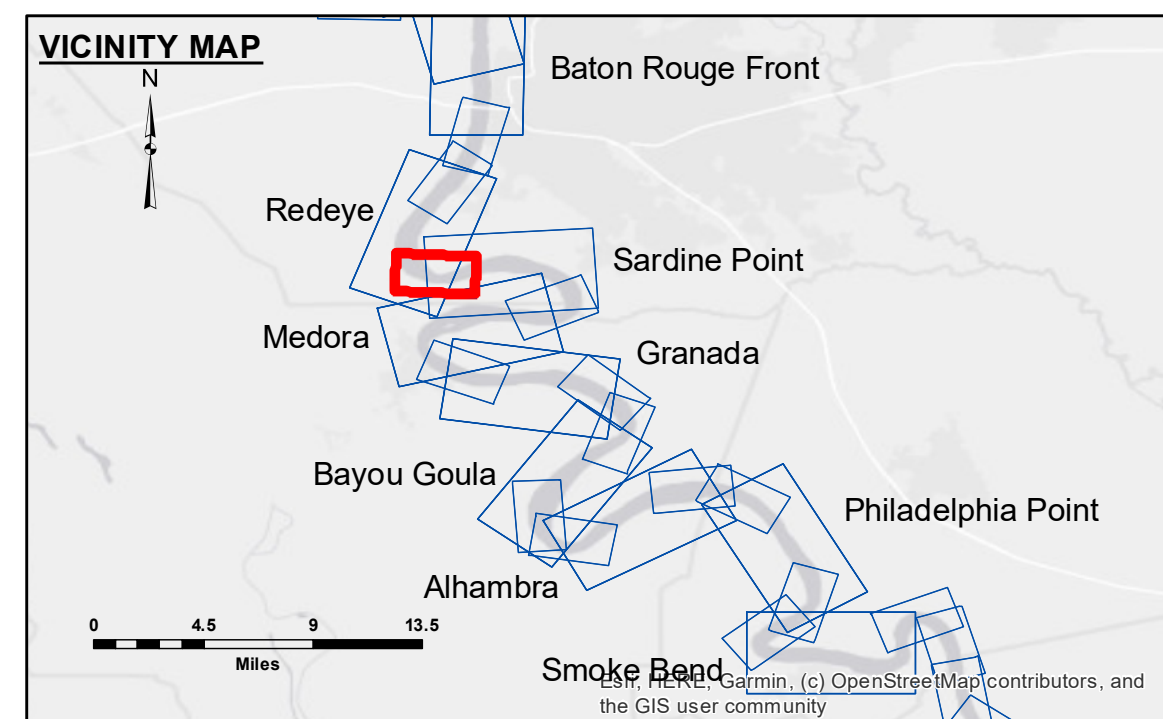
Information Distribution: This map represents the results of a hydrographic sounding operation conducted by the U.S. Navy. The information depicted on this map represents the results of a sounding operation conducted by the U.S. Navy. The information is provided to the recipient for the recipient's own use. The recipient is not to be held responsible for the accuracy of the information. The recipient is not to be held responsible for the accuracy of the information. The recipient is not to be held responsible for the accuracy of the information.

U.S. ARMY CORPS OF ENGINEERS NEW ORLEANS DISTRICT		Reviewed By: DISSR
Submitted: _____		
Recommended: _____	Chief, Survey Section	Noted By: BD
Approved: _____	Chief, Waterways Maintenance Section	Checked By: AO

MISSISSIPPI RIVER - B.R. TO GULF
MISSOURI BEND
MD_05_MIBX_20200901_CS
01 September 2020

Sheet
Reference
Number
5 of 97

Revision Number:
4.1-20191105



LWRP: 2.3
Gage Reading: PA:11.49 USED:11.49 NAVD
Sea Conditions: CALM
Vessel Name: M/V LAFOURCHE
Survey Type: CS
Sounding Frequency***: HIGH

NOTES:

Horizontal Coordinate System:
North American Datum of 1983 (NAD83), projected to the State Plane
Coordinate System (SPCS), Louisiana South Zone. Distance units in U.S. Survey Feet.

Vertical Datum:
Soundings are shown in feet and indicate depths below Low Water Reference Plane 2007 (NAVD).

Distances on the Mississippi River, above and below Head of Passes are shown
at 1 mile intervals.

The location of navigation aids are based on and provided by the U.S. Coast Guard and USACE crew.

2017 Aerial Photography data source: NAIP, USDA-FSA-APFO Aerial Photography Field Office.

Reference is N.O.A. Navigation Chart No. 11370.

** Shoalest Sounding per Quarter per Reach.

*** High frequency (200 kHz) survey data represents the first signal return at a sounding location and will include suspended solids, known as "fluff", if present. Low frequency (20 kHz) survey data normally penetrates through this "fluff" layer to depict elevations of consolidated bottom material. Low frequency accuracies may vary depending on channel conditions and fathometer settings.