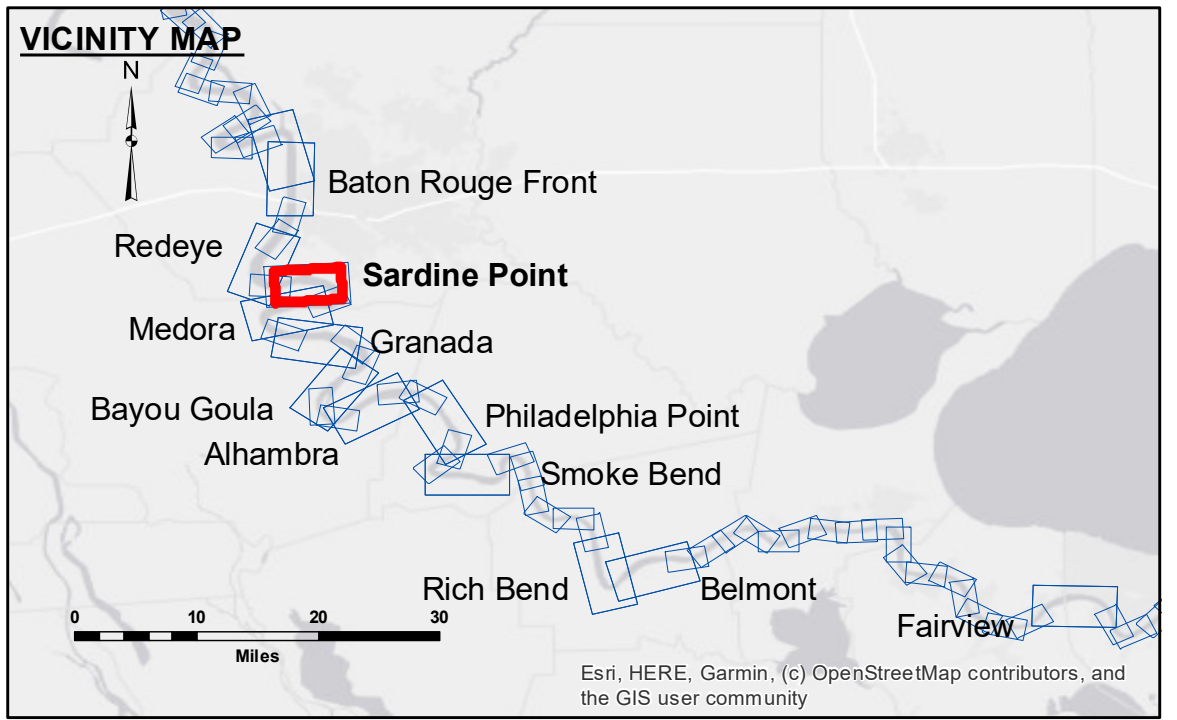


**DISCLAIMER:** The United States Government furnishes these data and the recipient accepts and uses them with the express understanding that the data are not to be used for any purpose other than that for which they were originally intended. The user is responsible for the results of any use of the data. The application of the data for other than its intended purpose is at the user's risk. The Corps of Engineers does not warrant the accuracy, completeness, or reliability of the data for any purpose other than that for which they were originally intended. The Corps of Engineers does not assume any liability for damages or losses resulting from the use of the data. The information depicted on this map represents the results of a survey conducted on the date of the survey. The Corps of Engineers does not assume any liability for changes in the hydrographic conditions when developed after the date of the survey. The Corps of Engineers does not assume any liability for errors in the data. The Corps of Engineers does not assume any liability for errors in the data. The Corps of Engineers does not assume any liability for errors in the data.

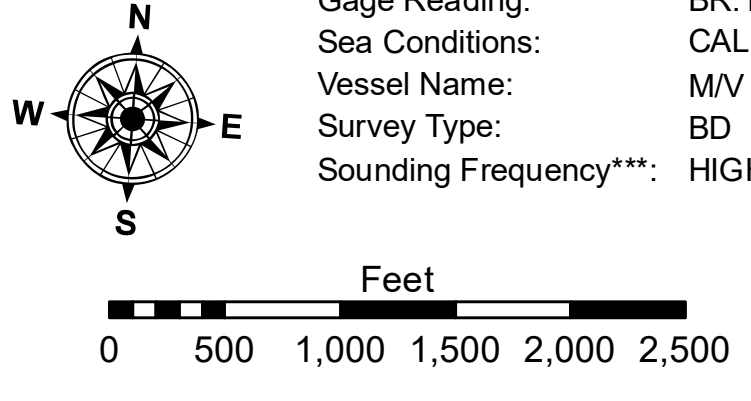
Submitted:	Surveyed By: D/S/SPS
Recommended: Chief Survey Section	Plotted By: BD
Approved: Chief Waterways Maintenance Section	Checked By: AC

**MISSISSIPPI RIVER - B.R. TO GULF SARDINE POINT CROSSING**  
**MD\_06\_SDPX\_20200728\_BD**  
**28 July 2020**



LEGEND	
--- Federal Navigation Channel	● Cable Area
— Federal Navigation Center Line	□ Placement Area
— As-built Pipeline/Cable	□ Anchorage Area
..... Unconfirmed Pipeline/Cable	⊗ Obstruction Point
— Project Depth Contour	★ Beacon, General
	◆ Red Navigation Buoy
	◆ Green Navigation Buoy
	□ Borrow Area
	● Shoalest Sounding**
	◆ Wrecks-Submerged
	■ 0' and above
	■ 0' to -5'
	■ -5' to -10'
	■ -10' to -20'
	■ -20' to -30'
	■ -30' to -35'
	■ -35' to -40'
	■ -40' to -45'
	■ -45' and below

LWRP: 2.3  
 Gage Reading: BR:14.8 D:7.9 USED:13.6 NAVD  
 Sea Conditions: CALM  
 Vessel Name: M/V LAFORCHE  
 Survey Type: BD  
 Sounding Frequency\*\*: HIGH



**NOTES:**  
 Horizontal Coordinate System: North American Datum of 1983 (NAD83), projected to the State Plane Coordinate System (SPCS), Louisiana South Zone. Distance units in U.S. Survey Feet.  
 Vertical Datum: Soundings are shown in feet and indicate depths below Low Water Reference Plane 2007 (NAVD).  
 Distances on the Mississippi River, above and below Head of Passes are shown at 1 mile intervals.  
 The location of navigation aids are base on and provided by the U.S. Coast Guard and USACE crew.  
 2010 Aerial Photography data source: NAIP, USDA-FSA-APFO Aerial Photography Field Office.  
 Reference is N.O.A. Navigation Chart No. 11370.  
 \*\* Shoalest Sounding per Quarter per Reach.  
 \*\*\* High frequency (200 kHz) survey data represents the first signal return at a sounding location and will include suspended solids, known as "fluff", if present. Low frequency (20 kHz) survey data normally penetrates through this "fluff" layer to depict elevations of consolidated bottom material. Low frequency accuracies may vary depending on channel conditions and fathometer settings.

**Sheet Reference Number**  
**6 of 97**  
 Revision Number: 4.1-20191105