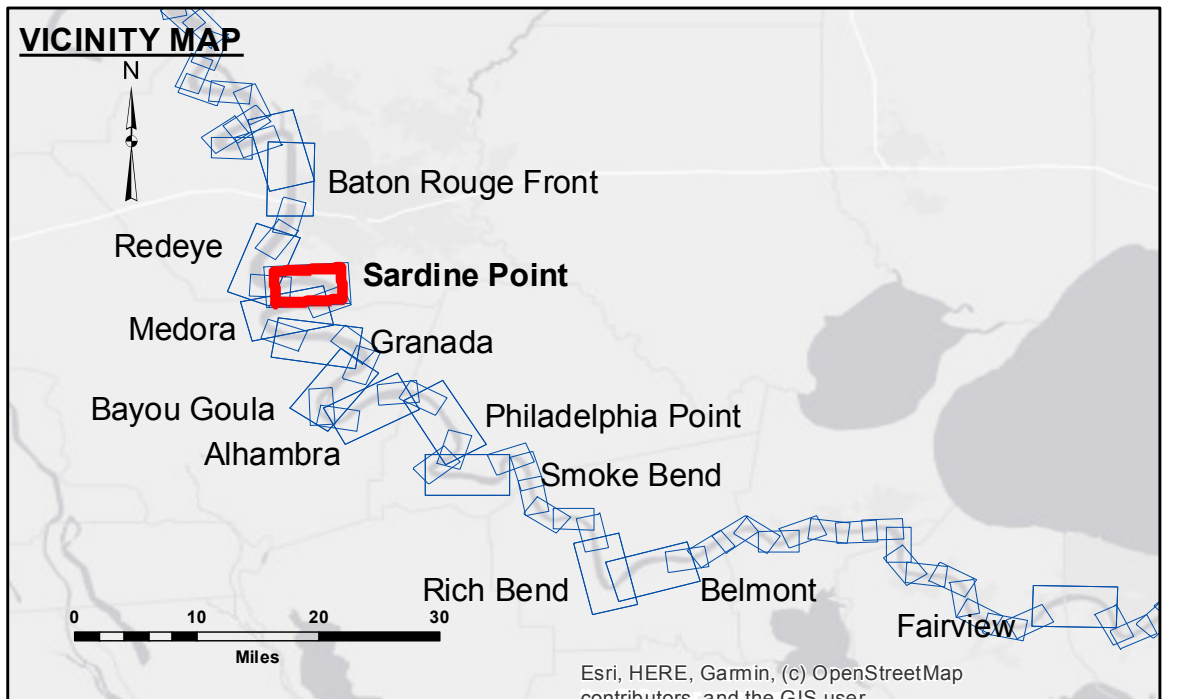


DISCLAIMER: The United States Government furnishes these data and the recipient accepts and uses them with the express understanding that the data are not to be used for any purpose other than that for which they were prepared. The user is responsible for the results of any use of the data for other than its intended purpose. The application of the data for other than its intended purpose may result in injury to persons or property. The user assumes all liability for any use of the data for other than its intended purpose. Data generated by hydrographic survey data is subject to change rapidly due to several factors including but not limited to changing hydrographic conditions, sedimentation, and other factors. The user assumes all liability for any use of the data for other than its intended purpose. The information depicted on this map represents the results of a survey conducted on the ground and is not to be used for any purpose other than that for which it was prepared. The user assumes all liability for any use of the data for other than its intended purpose.

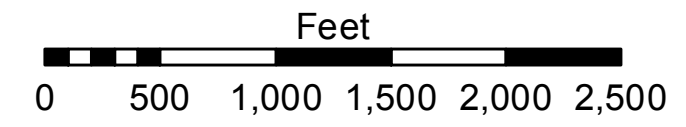
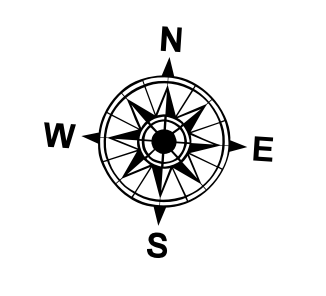
U.S. ARMY CORPS OF ENGINEERS NEW ORLEANS DISTRICT		
Submitted:	Surveyed By: RYLAND/ADAMS	Plotted By: BD
Recommended:	Chief, Survey Section	Checked By: AC
Approved:	Chief, Waterways Maintenance Section	

**MISSISSIPPI RIVER - B.R. TO GULF
SARDINE POINT CROSSING
MD_06_SDPX_20210401_CS
01 April 2021**



LEGEND		
--- Federal Navigation Channel	○ Cable Area	■ Borrow Area
— Federal Navigation Center Line	□ Placement Area	● Shoalest Sounding**
— As-built Pipeline/Cable	□ Anchorage Area	☆ Beacon, General
..... Unconfirmed Pipeline/Cable	⊗ Obstruction Point	◆ Red Navigation Buoy
— Project Depth Contour	⚓ Wrecks-Submerged	◆ Green Navigation Buoy

0' and above	0' to -5'
-5' to -10'	-10' to -20'
-20' to -30'	-30' to -35'
-35' to -40'	-40' to -45'
-45' and below	



LWRP: 2.3
Gage Reading: BR:36.2 D:25.2 USED:34.30 NAVD
Sea Conditions: CALM
Vessel Name: OB-189
Survey Type: CONDITION
Sounding Frequency***: HIGH

NOTES:
Horizontal Coordinate System:
North American Datum of 1983 (NAD83), projected to the State Plane Coordinate System (SPCS), Louisiana South Zone. Distance units in U.S. Survey Feet.
Vertical Datum:
Soundings are shown in feet and indicate depths below Low Water Reference Plane 2007 (NAVD).
Distances on the Mississippi River, above and below Head of Passes are shown at 1 mile intervals.
The location of navigation aids are base on and provided by the U.S. Coast Guard and USACE crew.
2010 Aerial Photography data source: NAIP, USDA-FSA-APFO Aerial Photography Field Office.
Reference is N.O.A. Navigation Chart No. 11370.
** Shoalest Sounding per Quarter per Reach.
*** High frequency (200 kHz) survey data represents the first signal return at a sounding location and will include suspended solids, known as "fluff", if present. Low frequency (20 kHz) survey data normally penetrates through this "fluff" layer to depict elevations of consolidated bottom material. Low frequency accuracies may vary depending on channel conditions and fathometer settings.

**Sheet Reference Number
6 of 97**