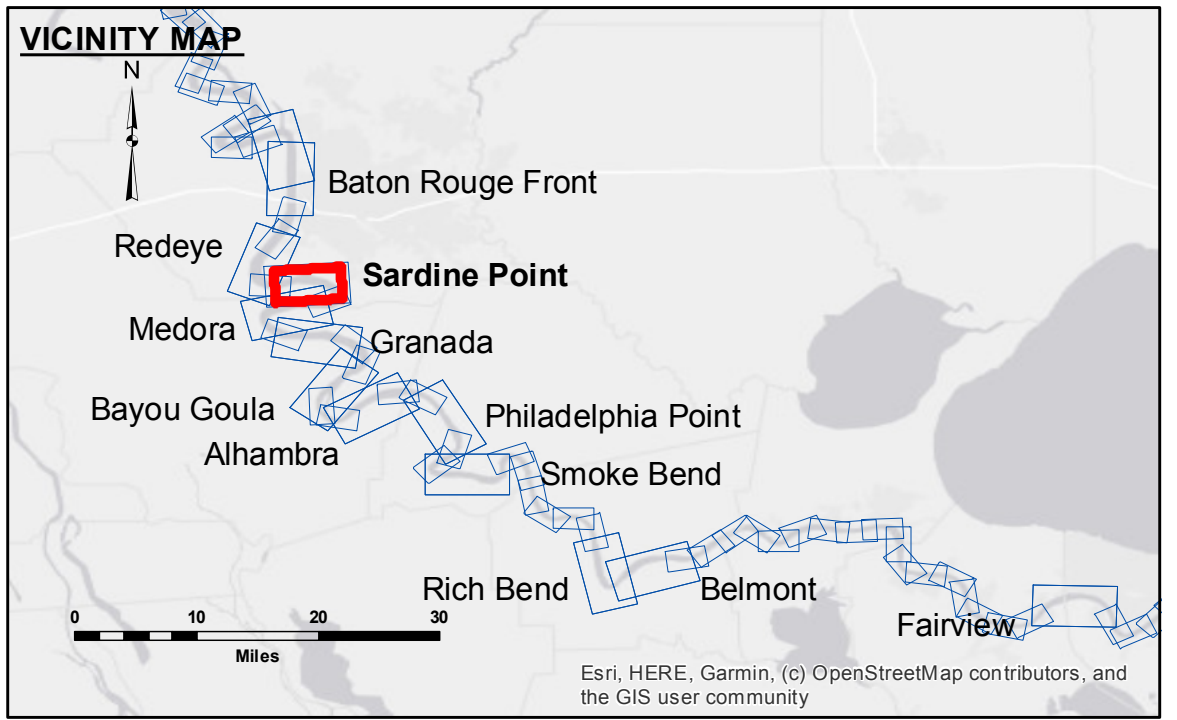


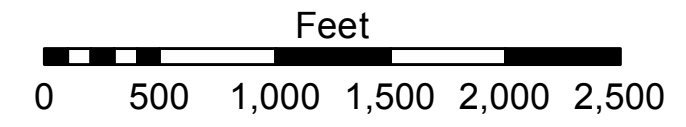
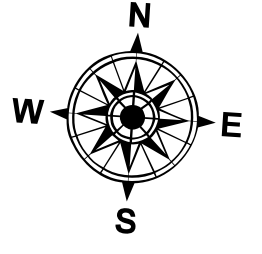
**Access to Data:** The United States Government furnishes these data and the recipient accepts and uses them with the express understanding that the recipient is responsible for the accuracy, completeness, reliability, usability or suitability for any particular purpose of the information received. The recipient may not reproduce or disseminate this information for any purpose other than that for which it was furnished to the recipient without the express written permission of the U.S. Army Corps of Engineers. The recipient may not transfer these data to others without the express written permission of the U.S. Army Corps of Engineers. The recipient may not use the information depicted on this map to develop other maps, charts or products without the express written permission of the U.S. Army Corps of Engineers. The recipient is responsible for the accuracy, completeness, reliability, usability or suitability of the information received.

U.S. ARMY CORPS OF ENGINEERS NEW ORLEANS DISTRICT		
Submitted:	Surveyed By:	DS/PS
Recommended:	Plotted By:	BD
Approved:	Checked By:	AC



**LEGEND**

	Federal Navigation Channel		Cable Area		Borrow Area		0' and above
	Federal Navigation Center Line		Placement Area		Shoalest Sounding**		0' to -5'
	As-built Pipeline/Cable		Anchorage Area		Beacon, General		-5' to -10'
	Unconfirmed Pipeline/Cable		Obstruction Point		Red Navigation Buoy		-10' to -20'
	Project Depth Contour		Wrecks-Submerged		Green Navigation Buoy		-20' to -30'
							-30' to -35'
							-35' to -40'
							-40' to -45'
							-45' and below



LWRP: 2.3  
Gage Reading: BR:7.9 D:3.8 USED: 7.2 NAVD  
Sea Conditions: CALM  
Vessel Name: M/V LAFORCHE  
Survey Type: CS  
Sounding Frequency\*\*\*: HIGH

**NOTES:**  
Horizontal Coordinate System: North American Datum of 1983 (NAD83), projected to the State Plane Coordinate System (SPCS), Louisiana South Zone. Distance units in U.S. Survey Feet.  
Vertical Datum: Soundings are shown in feet and indicate depths below Low Water Reference Plane 2007 (NAVD). Distances on the Mississippi River, above and below Head of Passes are shown at 1 mile intervals.  
The location of navigation aids are based on and provided by the U.S. Coast Guard and USACE crew. 2010 Aerial Photography data source: NAIP, USDA-FSA-APFO Aerial Photography Field Office. Reference is N.O.A.A. Navigation Chart No. 11370.  
\*\* Shoalest Sounding per Quarter per Reach.  
\*\*\* High frequency (200 kHz) survey data represents the first signal return at a sounding location and will include suspended solids, known as "fluff", if present. Low frequency (20 kHz) survey data normally penetrates through this "fluff" layer to depict elevations of consolidated bottom material. Low frequency accuracies may vary depending on channel conditions and bathymetry settings.

**MISSISSIPPI RIVER - B.R. TO GULF  
SARDINE POINT CROSSING  
MD\_06\_SDPX\_2021101\_AD  
01 November 2021**

**Sheet Reference Number  
6 of 97**

Revision Number:  
4.2-2021044.20