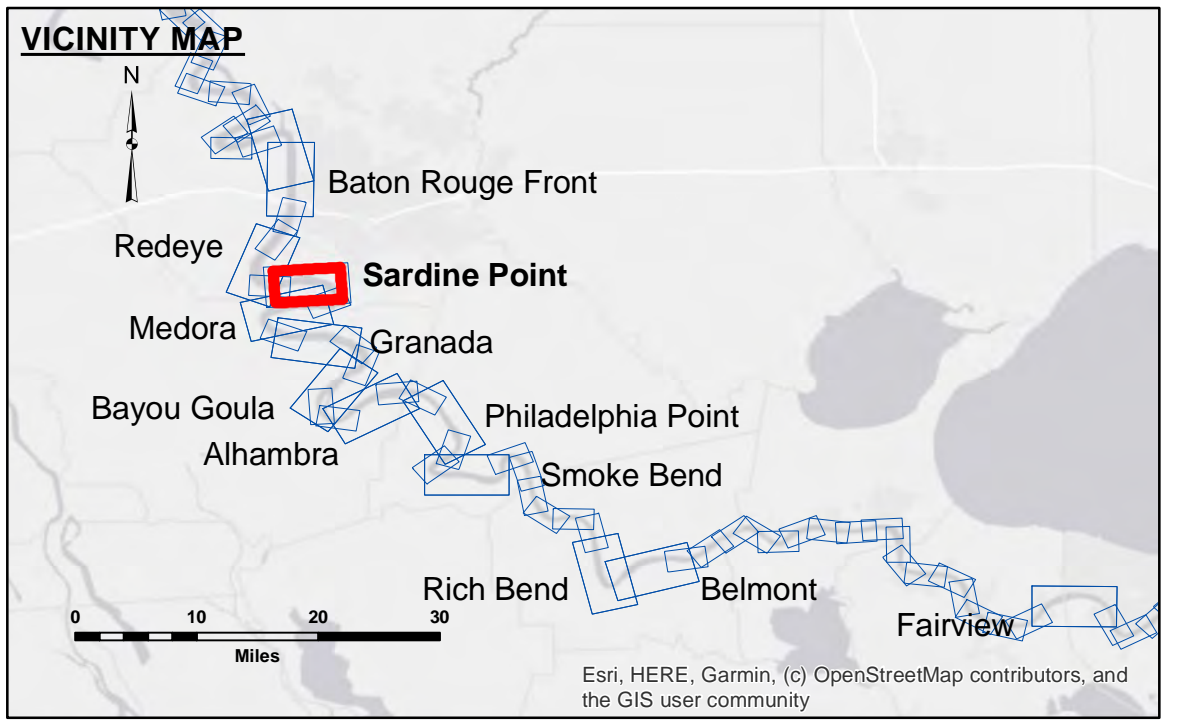


DISCLAIMER
 The data represented on this map is the result of a survey conducted for a specific purpose. The user is responsible for the accuracy, completeness, and reliability of the data for any purpose other than that for which it was collected. The user is responsible for the accuracy, completeness, and reliability of the data for any purpose other than that for which it was collected. The user is responsible for the accuracy, completeness, and reliability of the data for any purpose other than that for which it was collected.

U.S. ARMY CORPS OF ENGINEERS NEW ORLEANS DISTRICT		
Submitted:	Surveyed By: RYLAND/SIMMONS	Plotted By: BD
Recommended:	Chief, Survey Section	Checked By: ADU/H
Approved:	Chief, Waterways Maintenance Section	

**MISSISSIPPI RIVER - B.R. TO GULF
 SARDINE POINT CROSSING
 MD_06_SDPX_20230814_CS
 14 August 2023**



LEGEND		
--- Federal Navigation Channel	○ Cable Area	■ Borrow Area
— Federal Navigation Center Line	□ Placement Area	● Shoalest Sounding**
— As-built Pipeline/Cable	□ Anchorage Area	★ Beacon, General
..... Unconfirmed Pipeline/Cable	⊗ Obstruction Point	◆ Red Navigation Buoy
— Project Depth Contour	⚓ Wrecks-Submerged	◆ Green Navigation Buoy
		■ 0' and above
		■ 0' to -5'
		■ -5' to -10'
		■ -10' to -20'
		■ -20' to -30'
		■ -30' to -35'
		■ -35' to -40'
		■ -40' to -45'
		■ -45' and below

LWRP: 2.3
 Gage Reading: BR:8.5 D:4.3 USED:7.80 NAVD
 Sea Conditions: CALM
 Vessel Name: M/V LAFORCHE
 Survey Type: CS
 Sounding Frequency***: HIGH

NOTES:
 Horizontal Coordinate System:
 North American Datum of 1983 (NAD83), projected to the State Plane Coordinate System (SPCS), Louisiana South Zone. Distance units in U.S. Survey Feet.
 Vertical Datum:
 Soundings are shown in feet and indicate depths below Low Water Reference Plane 2007 (NAVD).
 Distances on the Mississippi River, above and below Head of Passes are shown at 1 mile intervals.
 The location of navigation aids are based on and provided by the U.S. Coast Guard and USACE crew.
 2010 Aerial Photography data source: NAIP, USDA-FSA-APFO Aerial Photography Field Office.
 Reference is N.O.A. Navigation Chart No. 11370.
 ** Shoalest Sounding per Quarter per Reach.
 *** High frequency (200 kHz) survey data represents the first signal return at a sounding location and will include suspended solids, known as "fluff", if present. Low frequency (20 kHz) survey data normally penetrates through this "fluff" layer to depict elevations of consolidated bottom material. Low frequency accuracies may vary depending on channel conditions and fathometer settings.

**Sheet Reference Number
 6 of 97**