

Access/Consignments: The United States Government furnishes these data and the recipient accepts and uses them with the express understanding that they are for official use only and are not to be distributed, copied, or used for any purpose other than that for which they were prepared. The user is responsible for the accuracy, completeness, and timeliness of the data. The user is responsible for the results of the data. The user is responsible for the results of the data. The user is responsible for the results of the data.

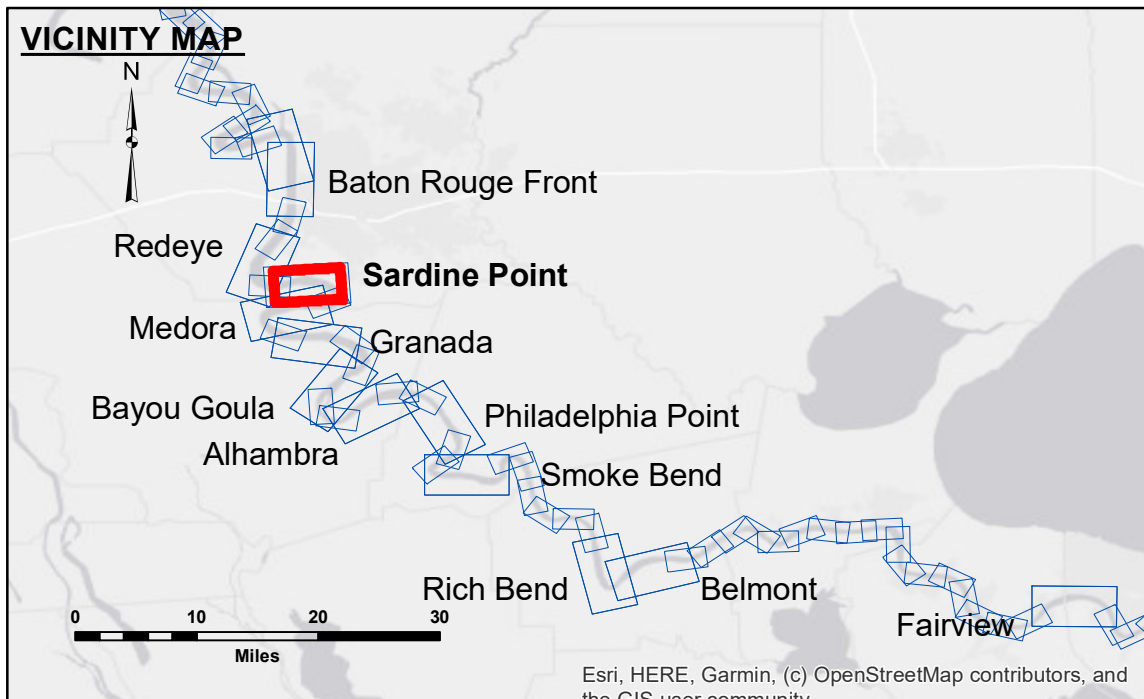
Distribution Liability: The data represents the results of data collection/processing for a specific US Army Corps of Engineers project. It is only valid for its intended use, content, time and accuracy specifications. The user is responsible for the results of the data. The user is responsible for the results of the data. The user is responsible for the results of the data.

Data Constraints: Hydrographic survey data is subject to change rapidly due to several factors including but not limited to changing hydrographic conditions when developed after the date of the survey. The user is responsible for the results of the data. The user is responsible for the results of the data. The user is responsible for the results of the data.

Submitted:	Surveyed By: D/S/S/PS
Recommended:	Plotted By: BD
Approved:	Checked By: AC

U.S. ARMY CORPS OF ENGINEERS
NEW ORLEANS DISTRICT

MISSISSIPPI RIVER - B.R. TO GULF
SARDINE POINT CROSSING
MD_06_SDP_20190829_CS
29 August 2019



LEGEND		Bathymetry	
--- Federal Navigation Channel	○ Cable Area	█ 0' and above	
— Federal Navigation Center Line	□ Placement Area	█ 0' to -5'	
— As-built Pipeline/Cable	□ Anchorage Area	█ -5' to -10'	
..... Unconfirmed Pipeline/Cable	⊗ Obstruction Point	█ -10' to -20'	
— Project Depth Contour	★ Beacon, General	█ -20' to -30'	
	◆ Red Navigation Buoy	█ -30' to -35'	
	◆ Green Navigation Buoy	█ -35' to -40'	
	◆ Wrecks-Submerged	█ -40' to -45'	
		█ -45' and below	

LWRP: 2.3
Gage Reading: BR:18.3 D:10.0 USED:16.9 NAVD
Sea Conditions: CALM
Vessel Name: M/V LAFOURCHE
Survey Type: CONDITION
Sounding Frequency***: HIGH

Feet
0 500 1,000 1,500 2,000 2,500

NOTES:
Horizontal Coordinate System:
North American Datum of 1983 (NAD83), projected to the State Plane Coordinate System (SPCS), Louisiana South Zone. Distance units in U.S. Survey Feet.
Vertical Datum:
Soundings are shown in feet and indicate depths below Low Water Reference Plane 2007 (NAVD).
Distances on the Mississippi River, above and below Head of Passes are shown at 1 mile intervals.
The location of navigation aids are based on and provided by the U.S. Coast Guard and USACE crew.
2015 Aerial Photography data source: NAIP, USDA-FSA-APFO Aerial Photography Field Office.
Reference is N.O.A. Navigation Chart No. 11370.
*** Shoalest Sounding per Quarter per Reach.
*** High frequency (200 kHz) survey data represents the first signal return at a sounding location and will include suspended solids, known as "fluff", if present. Low frequency (20 kHz) survey data normally penetrates through this "fluff" layer to depict elevations of consolidated bottom material. Low frequency accuracies may vary depending on channel conditions and fathometer settings.

Sheet Reference Number
6 of 97