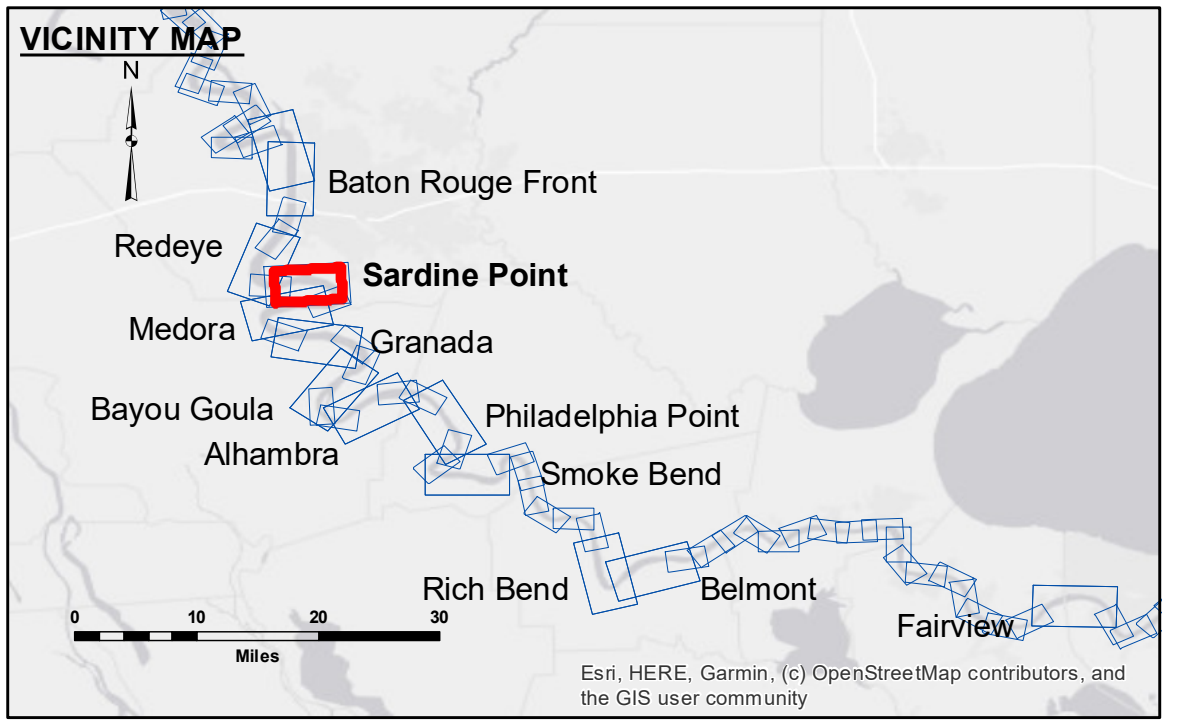


DISCLAIMER: The United States Government furnishes these data and the recipient accepts and uses them with the express understanding that the data are not to be used for any purpose other than that for which they were prepared. The user is responsible for the results of any use of the data for other than its intended purpose. The application of the data for other than its intended purpose is at the user's risk. The data are not to be used for any purpose other than that for which they were prepared. The user is responsible for the results of any use of the data for other than its intended purpose. The application of the data for other than its intended purpose is at the user's risk. The data are not to be used for any purpose other than that for which they were prepared. The user is responsible for the results of any use of the data for other than its intended purpose. The application of the data for other than its intended purpose is at the user's risk.

U.S. ARMY CORPS OF ENGINEERS NEW ORLEANS DISTRICT		
Submitted:	Surveyed By: RYLAND/HOSHMAN	Plotted By: BD
Recommended:	Chart Survey Section	Checked By: AC
Approved:	Chart, Waterways Maintenance Section	

**MISSISSIPPI RIVER - B.R. TO GULF
SARDINE POINT CROSSING
MD_06_SDP_20190925_CS
25 September 2019**



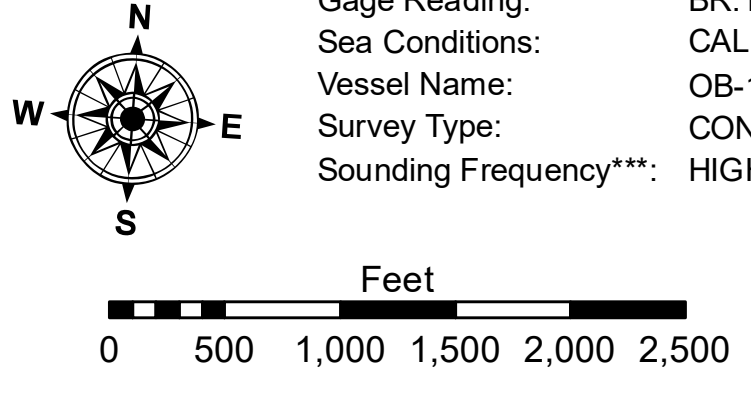
LEGEND		LEGEND		LEGEND	
--- Federal Navigation Channel	○ Cable Area	□ Borrow Area	■ 0' and above	☆ Beacon, General	■ 0' to -5'
— Federal Navigation Center Line	□ Placement Area	● Shoalest Sounding**	■ -5' to -10'	◆ Red Navigation Buoy	■ -10' to -20'
— As-built Pipeline/Cable	□ Anchorage Area	★	■ -20' to -30'	◆ Green Navigation Buoy	■ -20' to -30'
..... Unconfirmed Pipeline/Cable	⊗ Obstruction Point		■ -30' to -35'		■ -30' to -35'
— Project Depth Contour	✈ Wrecks-Submerged		■ -35' to -40'		■ -35' to -40'
			■ -40' to -45'		■ -40' to -45'
			■ -45' and below		■ -45' and below

LWRP: 2.3
 Gage Reading: BR:13.5 D:7.6 USED:12.50 NAVD
 Sea Conditions: CALM
 Vessel Name: OB-189
 Survey Type: CONDITION
 Sounding Frequency**: HIGH

Vertical Datum:
 Soundings are shown in feet and indicate depths below Low Water Reference Plane 2007 (NAVD).
 Distances on the Mississippi River, above and below Head of Passes are shown at 1 mile intervals.

The location of navigation aids are base on and provided by the U.S. Coast Guard and USACE crew.
 2015 Aerial Photography data source: NAIP, USDA-FSA-APFO Aerial Photography Field Office.
 Reference is N.O.A. Navigation Chart No. 11370.
 ** Shoalest Sounding per Quarter per Reach.

*** High frequency (200 kHz) survey data represents the first signal return at a sounding location and will include suspended solids, known as "fluff", if present. Low frequency (20 kHz) survey data normally penetrates through this "fluff" layer to depict elevations of consolidated bottom material. Low frequency accuracies may vary depending on channel conditions and fathometer settings.



**Sheet Reference Number
6 of 97**