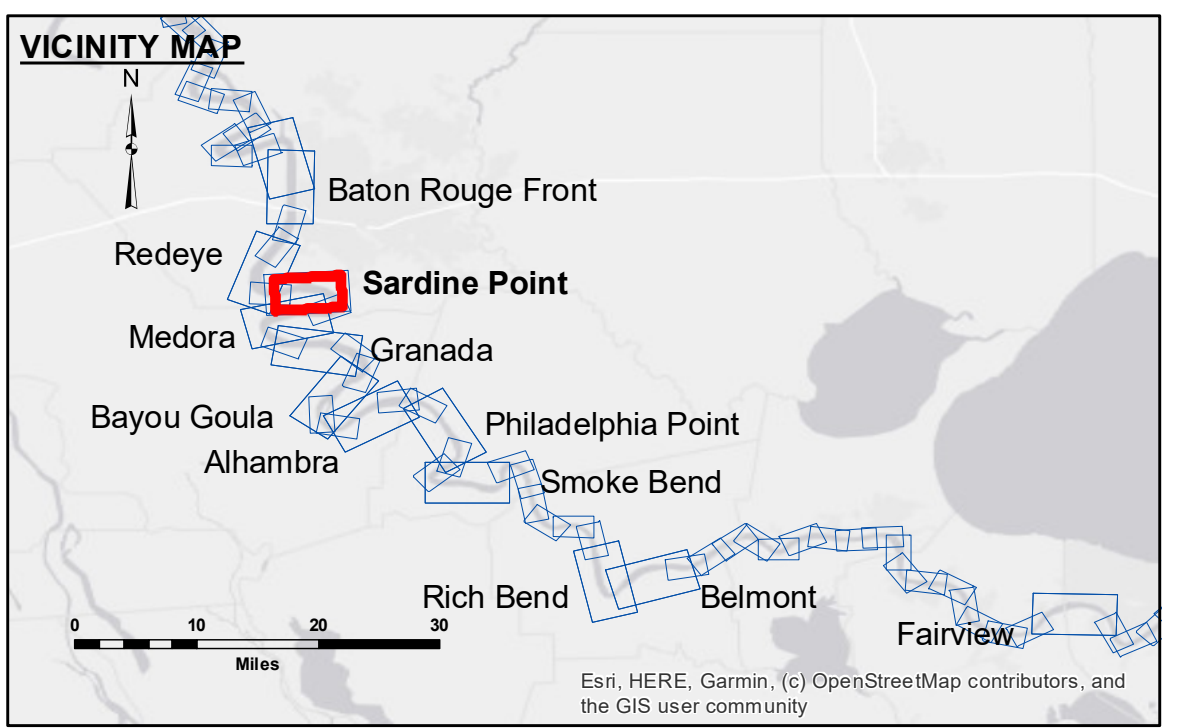


DISCLAIMER: The United States Government furnishes these data and the recipient accepts and uses them with the express understanding that they are not to be used for any purpose other than that for which they were prepared. The user is responsible for the results of any use of these data. The application of the data for other than its intended purpose is at the user's risk. The Corps of Engineers does not warrant the accuracy, reliability, or completeness of the data for other than its intended purpose. The Corps of Engineers does not assume any liability for claims in damages or for any other loss or injury resulting from the use of these data. The information depicted on this map represents the results of a survey conducted on the date shown. The Corps of Engineers does not consider the information to represent the general condition existing at that time.

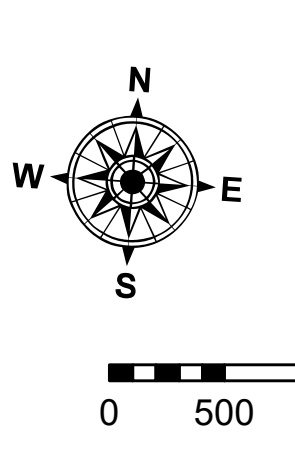
U.S. ARMY CORPS OF ENGINEERS NEW ORLEANS DISTRICT	
Submitted:	Surveyed By: DIS/SIS
Recommended: Chief Survey Section	Plotted By: BD
Approved: Chief Waterways Maintenance Section	Checked By: AC

**MISSISSIPPI RIVER - B.R. TO GULF
SARDINE POINT CROSSING
MD_06_SDP_20200128_CS
28 January 2020**



LEGEND	
--- Federal Navigation Channel	● Cable Area
— Federal Navigation Center Line	■ Placement Area
— As-built Pipeline/Cable	□ Anchorage Area
..... Unconfirmed Pipeline/Cable	⊗ Obstruction Point
— Project Depth Contour	✈ Wrecks-Submerged
□ Borrow Area	★ Beacon, General
● Shoalest Sounding**	◆ Red Navigation Buoy
◆ Green Navigation Buoy	

0' and above	0' to -5'
-5' to -10'	-10' to -20'
-20' to -30'	-30' to -35'
-35' to -40'	-40' to -45'
-45' and below	



LWRP: 2.4
Gage Reading: BR:38.7 D:27.9 USED:39.8 NAVD
Sea Conditions: CALM
Vessel Name: M/V LAFOURCHE
Survey Type: CONDITION
Sounding Frequency**: HIGH

NOTES:
Horizontal Coordinate System:
North American Datum of 1983 (NAD83), projected to the State Plane Coordinate System (SPCS), Louisiana South Zone. Distance units in U.S. Survey Feet.
Vertical Datum:
Soundings are shown in feet and indicate depths below Low Water Reference Plane 2007 (NAVD).
Distances on the Mississippi River, above and below Head of Passes are shown at 1 mile intervals.
The location of navigation aids are base on and provided by the U.S. Coast Guard and USACE crew.
2015 Aerial Photography data source: NAIP, USDA-FSA-APFO Aerial Photography Field Office.
Reference is N.O.A. Navigation Chart No. 11370.
** Shoalest Sounding per Quarter per Reach.
*** High frequency (200 kHz) survey data represents the first signal return at a sounding location and will include suspended solids, known as "fluff", if present. Low frequency (20 kHz) survey data normally penetrates through this "fluff" layer to depict elevations of consolidated bottom material. Low frequency accuracies may vary depending on channel conditions and fathometer settings.

**Sheet Reference Number
6 of 97**