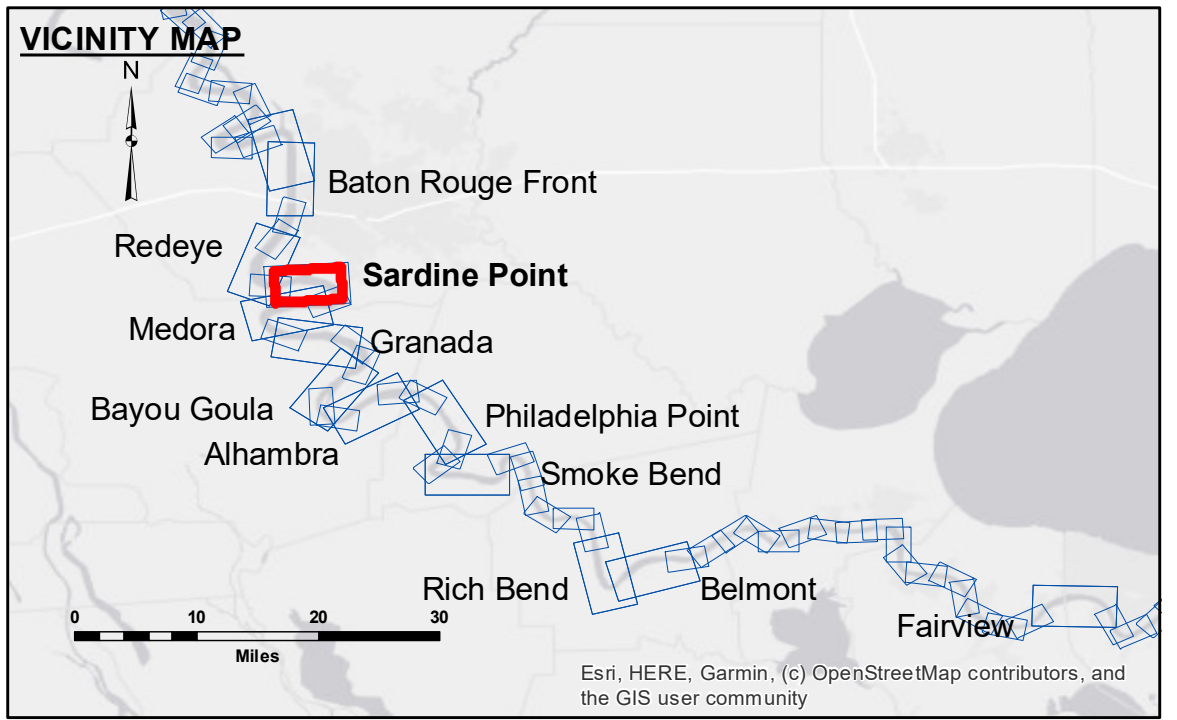


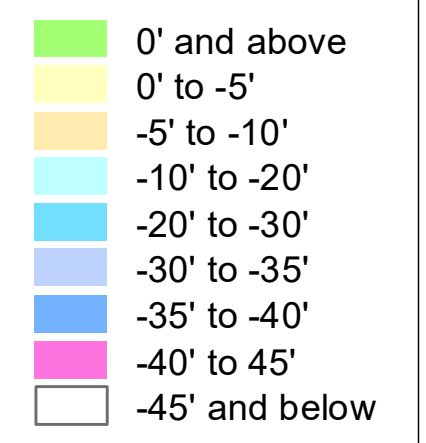
DISCLAIMER: The United States Government furnishes these data and the recipient accepts and uses them with the express understanding that the data are not to be used for any purpose other than that for which they were prepared. The user is responsible for the results of any use of the data for other than its intended purpose. The application of the data for other than its intended purpose may result in injury or damage to persons or property. The information depicted on this map represents the results of a survey conducted by the United States Army Corps of Engineers. The information is not to be used for any purpose other than that for which it was prepared. The user is responsible for the results of any use of the data for other than its intended purpose. The application of the data for other than its intended purpose may result in injury or damage to persons or property. The information depicted on this map represents the results of a survey conducted by the United States Army Corps of Engineers. The information is not to be used for any purpose other than that for which it was prepared. The user is responsible for the results of any use of the data for other than its intended purpose. The application of the data for other than its intended purpose may result in injury or damage to persons or property.

U.S. ARMY CORPS OF ENGINEERS NEW ORLEANS DISTRICT	
Submitted:	Surveyed By: JH/SPS
Recommended: Chief Survey Section	Plotted By: BD
Approved: Chief Waterways Maintenance Section	Checked By: AC

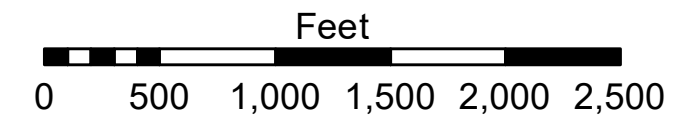
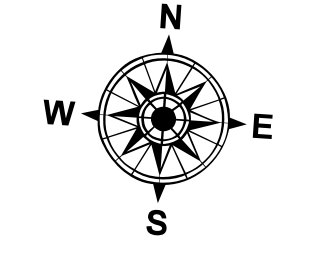
**MISSISSIPPI RIVER - B.R. TO GULF
SARDINE POINT CROSSING
MD_06_SDP_20200706_CS
06 July 2020**



LEGEND	
--- Federal Navigation Channel	● Cable Area
— Federal Navigation Center Line	□ Placement Area
— As-built Pipeline/Cable	□ Anchorage Area
..... Unconfirmed Pipeline/Cable	⊗ Obstruction Point
— Project Depth Contour	✈ Wrecks-Submerged
□ Borrow Area	★ Beacon, General
● Shoalest Sounding**	◆ Red Navigation Buoy
◆ Green Navigation Buoy	



LWRP: 2.3
Gage Reading: BR:22.7 D:13.8 USED:21.2 NAVD
Sea Conditions: CALM
Vessel Name: M/V LAFORCHE
Survey Type: CS
Sounding Frequency**: HIGH



NOTES:
Horizontal Coordinate System: North American Datum of 1983 (NAD83), projected to the State Plane Coordinate System (SPCS), Louisiana South Zone. Distance units in U.S. Survey Feet.
Vertical Datum: Soundings are shown in feet and indicate depths below Low Water Reference Plane 2007 (NAVD).
Distances on the Mississippi River, above and below Head of Passes are shown at 1 mile intervals.
The location of navigation aids are base on and provided by the U.S. Coast Guard and USACE crew.
2015 Aerial Photography data source: NAIP, USDA-FSA-APFO Aerial Photography Field Office.
Reference is N.O.A. Navigation Chart No. 11370.
** Shoalest Sounding per Quarter per Reach.
*** High frequency (200 kHz) survey data represents the first signal return at a sounding location and will include suspended solids, known as "fluff", if present. Low frequency (20 kHz) survey data normally penetrates through this "fluff" layer to depict elevations of consolidated bottom material. Low frequency accuracies may vary depending on channel conditions and fathometer settings.

**Sheet Reference Number
6 of 97**

Revision Number:
4.1-20191105