

DISTRIBUTION STATEMENT: The data represents the results of data collection processing for a specific US Army Corps of Engineers project. It is intended for use in the design, construction, and maintenance of navigational aids. It is not intended for use in any other application. The user is responsible for the results and any consequences of its use. The application of the data for other than its intended purpose is at the user's risk.

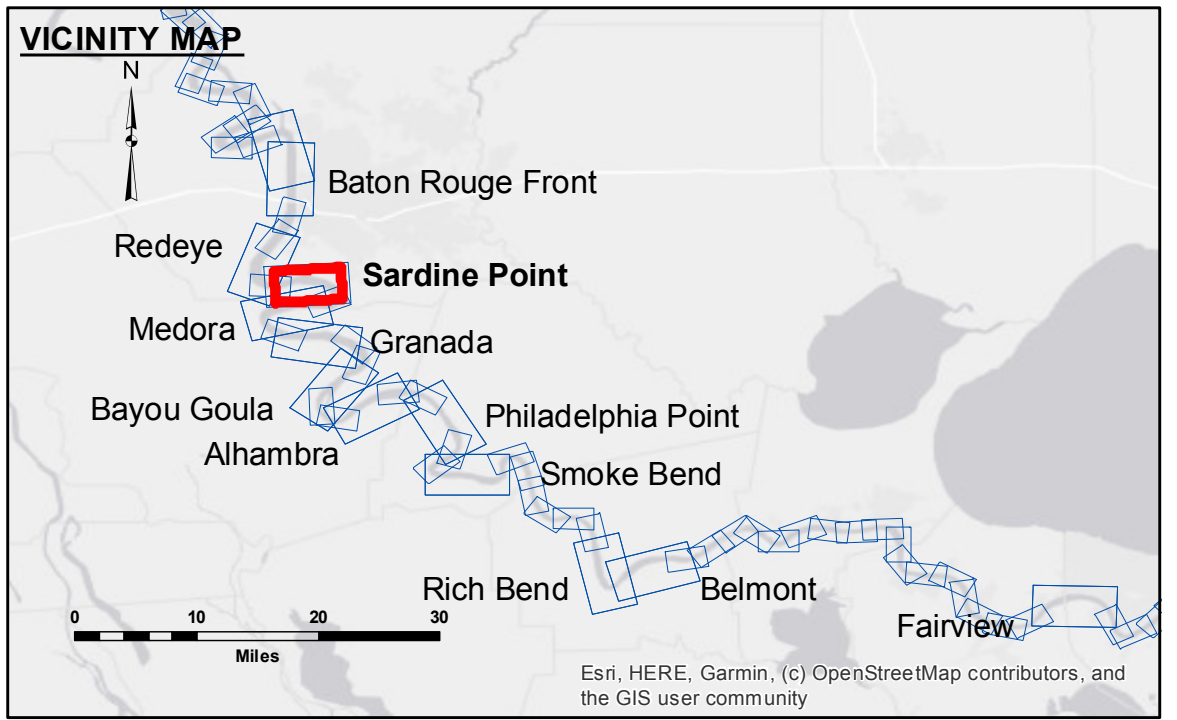
DATE OF DATA: Hydrographic survey data is subject to change due to several factors including but not limited to dredging, sedimentation, and changes in the river channel. The user is responsible for verifying the accuracy of the data for their specific application. The information depicted on this map represents the results of a survey conducted on the date indicated. The user is responsible for verifying the accuracy of the data for their specific application.

U.S. ARMY CORPS OF ENGINEERS NEW ORLEANS DISTRICT	
Submitted:	Surveyed By: JH/SPS
Recommended:	Plotted By: BD
Checked:	Checked By: AC
Approved:	Checked By: AC

**MISSISSIPPI RIVER - B.R. TO GULF
SARDINE POINT CROSSING
MD_06_SDP_20200708_CS
08 July 2020**

**Sheet Reference Number
6 of 97**

Revision Number:
4.1-20191105



LEGEND

--- Federal Navigation Channel	○ Cable Area	□ Borrow Area	■ 0' and above
— Federal Navigation Center Line	▭ Placement Area	● Shoalest Sounding**	■ 0' to -5'
— As-built Pipeline/Cable	⊗ Anchorage Area	★ Beacon, General	■ -5' to -10'
⋯ Unconfirmed Pipeline/Cable	⊗ Obstruction Point	♦ Red Navigation Buoy	■ -10' to -20'
— Project Depth Contour	✙ Wrecks-Submerged	◆ Green Navigation Buoy	■ -20' to -30'
			■ -30' to -35'
			■ -35' to -40'
			■ -40' to -45'
			■ -45' and below

LWRP: 2.3
 Gage Reading: BR:23.5 D:14.3 USED:21.9 NAVD
 Sea Conditions: CALM
 Vessel Name: M/V LAFORCHE
 Survey Type: CS
 Sounding Frequency**: HIGH

NOTES:
 Horizontal Coordinate System:
 North American Datum of 1983 (NAD83), projected to the State Plane Coordinate System (SPCS), Louisiana South Zone. Distance units in U.S. Survey Feet.
 Vertical Datum:
 Soundings are shown in feet and indicate depths below Low Water Reference Plane 2007 (NAVD).
 Distances on the Mississippi River, above and below Head of Passes are shown at 1 mile intervals.
 The location of navigation aids are based on and provided by the U.S. Coast Guard and USACE crew.
 2015 Aerial Photography data source: NAIP, USDA-FSA-APFO Aerial Photography Field Office.
 Reference is N.O.A. Navigation Chart No. 11370.
 ** Shoalest Sounding per Quarter per Reach.
 *** High frequency (200 kHz) survey data represents the first signal return at a sounding location and will include suspended solids, known as "fluff", if present. Low frequency (20 kHz) survey data normally penetrates through this "fluff" layer to depict elevations of consolidated bottom material. Low frequency accuracies may vary depending on channel conditions and fathometer settings.