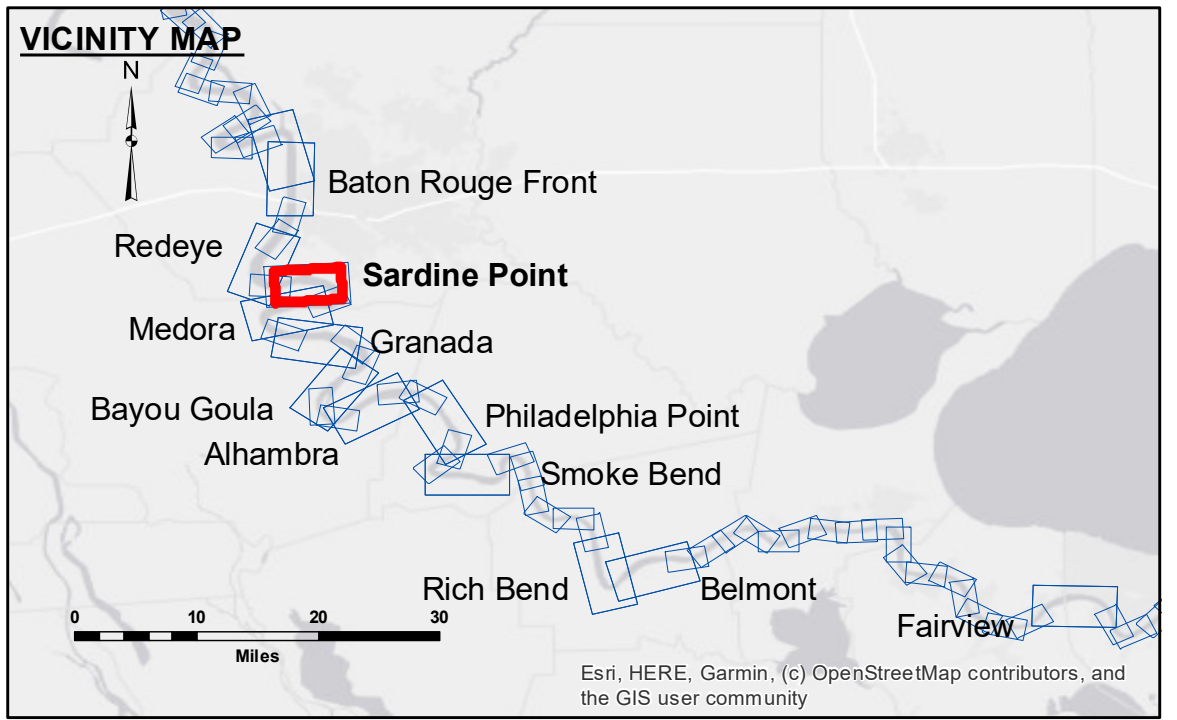


DISCLAIMER: The data represented on this map represents the results of a specific US Army Corps of Engineers survey and is not intended to be used for any other purpose. The user is responsible for the results of any application of the data for other than its intended purpose. The information depicted on this map represents the results of a specific US Army Corps of Engineers survey and is not intended to be used for any other purpose. The user is responsible for the results of any application of the data for other than its intended purpose. The information depicted on this map represents the results of a specific US Army Corps of Engineers survey and is not intended to be used for any other purpose. The user is responsible for the results of any application of the data for other than its intended purpose.

U.S. ARMY CORPS OF ENGINEERS NEW ORLEANS DISTRICT	
Submitted:	Surveyed By: DJS/SJS
Recommended: Chief Survey Section	Plotted By: BD
Approved: Chief Waterways Maintenance Section	Checked By: AC

**MISSISSIPPI RIVER - B.R. TO GULF
SARDINE POINT CROSSING
MD_06_SDP_20200728_BD
28 July 2020**



LEGEND		LEGEND		LEGEND	
--- Federal Navigation Channel	○ Cable Area	□ Borrow Area	■ 0' and above	☆ Beacon, General	■ -5' to -10'
— Federal Navigation Center Line	□ Placement Area	● Shoalest Sounding**	■ -10' to -20'	◆ Red Navigation Buoy	■ -20' to -30'
— As-built Pipeline/Cable	□ Anchorage Area	☆ Beacon, General	■ -30' to -35'	◆ Green Navigation Buoy	■ -35' to -40'
..... Unconfirmed Pipeline/Cable	⊗ Obstruction Point	◆ Red Navigation Buoy	■ -40' to -45'		■ -45' and below
— Project Depth Contour	✈ Wrecks-Submerged	◆ Green Navigation Buoy			

LWRP: 2.3
Gage Reading: BR:14.8 D:7.9 USED:13.6 NAVD
Sea Conditions: CALM
Vessel Name: M/V LAFORCHE
Survey Type: BD
Sounding Frequency:** HIGH

NOTES:
 Horizontal Coordinate System: North American Datum of 1983 (NAD83), projected to the State Plane Coordinate System (SPCS), Louisiana South Zone. Distance units in U.S. Survey Feet.
 Vertical Datum: Soundings are shown in feet and indicate depths below Low Water Reference Plane 2007 (NAVD).
 Distances on the Mississippi River, above and below Head of Passes are shown at 1 mile intervals.
 The location of navigation aids are base on and provided by the U.S. Coast Guard and USACE crew.
 2015 Aerial Photography data source: NAIP, USDA-FSA-APFO Aerial Photography Field Office.
 Reference is N.O.A. Navigation Chart No. 11370.
 ** Shoalest Sounding per Quarter per Reach.
 *** High frequency (200 kHz) survey data represents the first signal return at a sounding location and will include suspended solids, known as "fluff", if present. Low frequency (20 kHz) survey data normally penetrates through this "fluff" layer to depict elevations of consolidated bottom material. Low frequency accuracies may vary depending on channel conditions and fathometer settings.

**Sheet Reference Number
6 of 97**