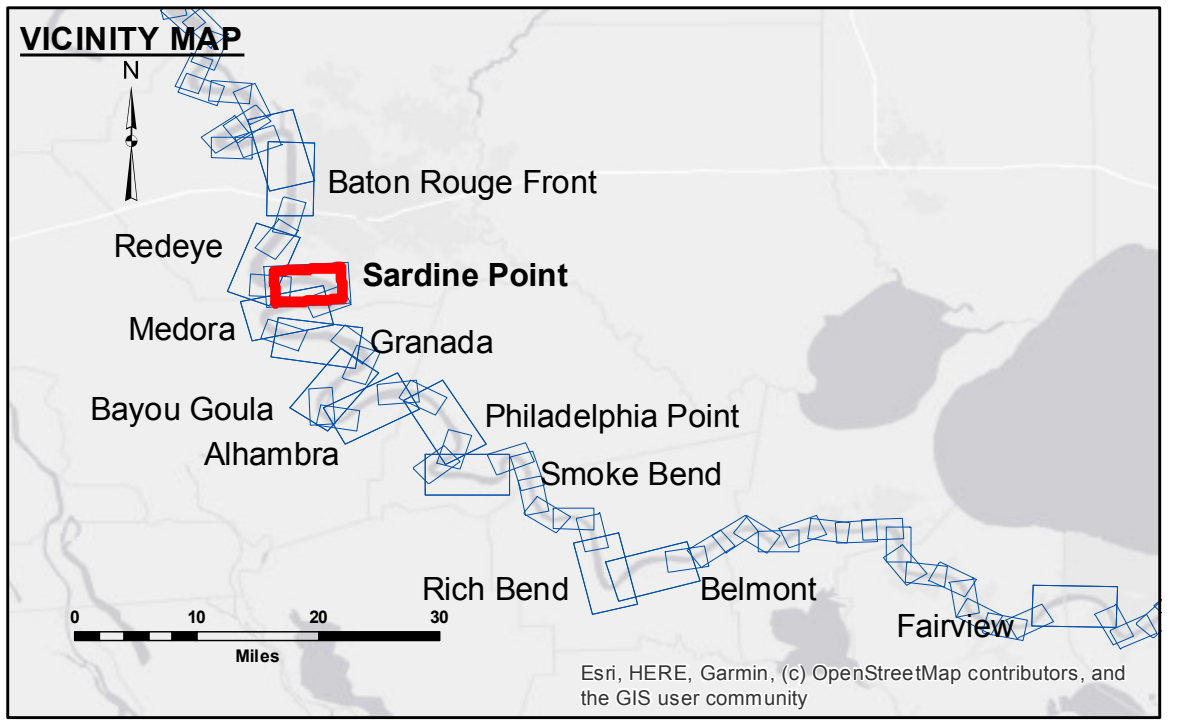


DISCLAIMER: The data represented on this map represents the results of a hydrographic survey conducted by the U.S. Army Corps of Engineers. The data is only valid for its intended use, and the user is responsible for the accuracy, completeness, and reliability of the data for any purpose other than that intended. The user is responsible for the accuracy, completeness, and reliability of the data for any purpose other than that intended. The user is responsible for the accuracy, completeness, and reliability of the data for any purpose other than that intended.

Submitted:	Surveyed By: DJS/SFS
Recommended: Chief Survey Section	Plotted By: AO
Approved: Chief Waterways Maintenance Section	Checked By: AO

MISSISSIPPI RIVER - B.R. TO GULF SARDINE POINT CROSSING MD_06_SDP_20200805_CS 05 August 2020



LEGEND		Depth Contours	
--- Federal Navigation Channel	○ Cable Area	■ 0' and above	Borrow Area Shoalest Sounding** Beacon, General Red Navigation Buoy Green Navigation Buoy
— Federal Navigation Center Line	□ Placement Area	■ 0' to -5'	
— As-built Pipeline/Cable	□ Anchorage Area	■ -5' to -10'	
..... Unconfirmed Pipeline/Cable	⊗ Obstruction Point	■ -10' to -20'	
— Project Depth Contour	✈ Wrecks-Submerged	■ -20' to -30'	
		■ -30' to -35'	
		■ -35' to -40'	
		■ -40' to -45'	
		■ -45' and below	

LWRP: 2.3
 Gage Reading: BR:14.2D:7.2 USED:13.0 NAVD
 Sea Conditions: SMOOTH
 Vessel Name: LAFOURCHE
 Survey Type: CS
 Sounding Frequency**: HIGH

NOTES:
 Horizontal Coordinate System: North American Datum of 1983 (NAD83), projected to the State Plane Coordinate System (SPCS), Louisiana South Zone. Distance units in U.S. Survey Feet.
 Vertical Datum: Soundings are shown in feet and indicate depths below Low Water Reference Plane 2007 (NAVD).
 Distances on the Mississippi River, above and below Head of Passes are shown at 1 mile intervals.
 The location of navigation aids are based on and provided by the U.S. Coast Guard and USACE crew.
 2015 Aerial Photography data source: NAIP, USDA-FSA-APFO Aerial Photography Field Office.
 Reference is N.O.A. Navigation Chart No. 11370.
 ** Shoalest Sounding per Quarter per Reach.
 *** High frequency (200 kHz) survey data represents the first signal return at a sounding location and will include suspended solids, known as "fluff", if present. Low frequency (20 kHz) survey data normally penetrates through this "fluff" layer to depict elevations of consolidated bottom material. Low frequency accuracies may vary depending on channel conditions and fathometer settings.

Sheet Reference Number 6 of 97
 Revision Number: 4.1-20191105