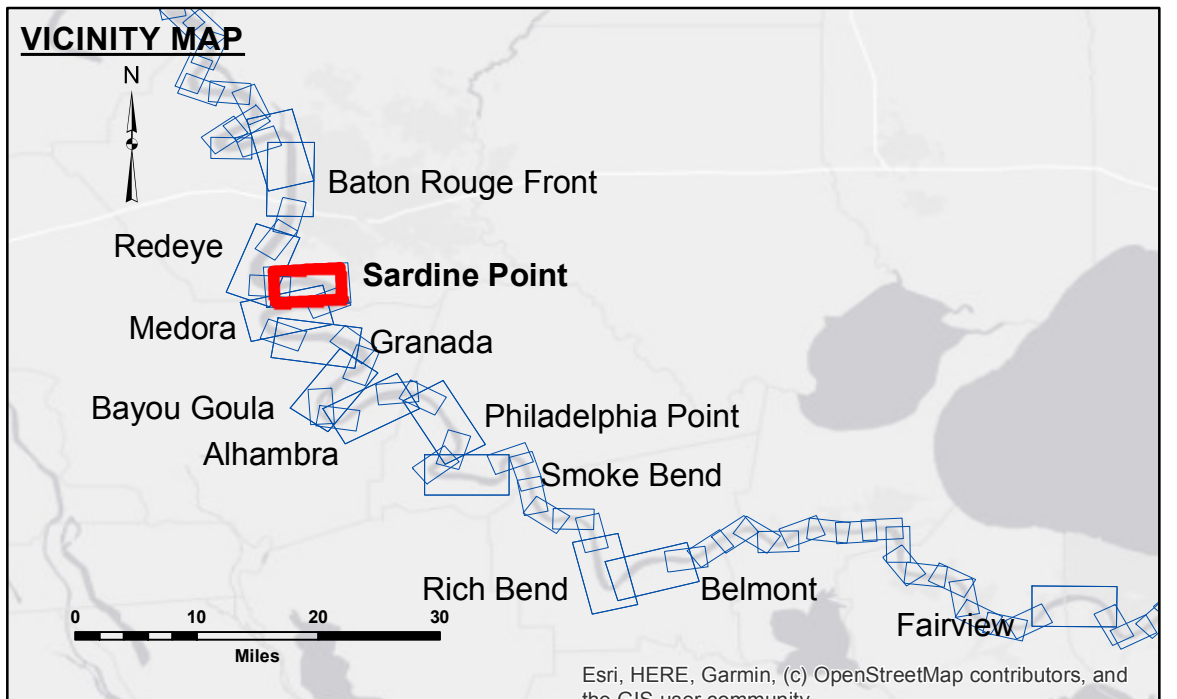


**DISCLAIMER**  
 The information depicted on this map represents the results of a survey conducted by the U.S. Army Corps of Engineers. It is not intended to be used for any purpose other than that for which it was prepared. The user is responsible for the accuracy, completeness, and reliability of the information for any particular purpose. The user is responsible for the accuracy, completeness, and reliability of the information for any particular purpose. The user is responsible for the accuracy, completeness, and reliability of the information for any particular purpose.

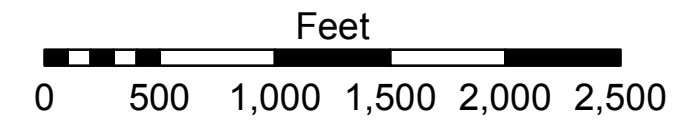
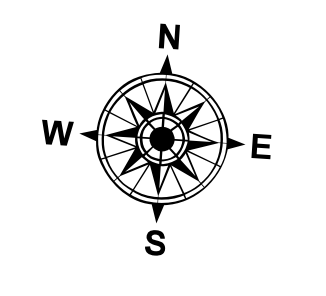
|   |                     |
|---|---------------------|
| Submitted:                                    | Surveyed By: JH/SPS |
| Recommended: Chief Survey Section             | Plotted By: BD      |
| Approved: Chief Waterways Maintenance Section | Checked By: AC      |

**MISSISSIPPI RIVER - B.R. TO GULF  
 SARDINE POINT CROSSING  
 MD\_06\_SDP\_20200910\_CS  
 10 September 2020**



| LEGEND                           |                       |
|----------------------------------|-----------------------|
| --- Federal Navigation Channel   | ● Cable Area          |
| — Federal Navigation Center Line | ■ Placement Area      |
| — As-built Pipeline/Cable        | □ Anchorage Area      |
| ..... Unconfirmed Pipeline/Cable | ⊗ Obstruction Point   |
| — Project Depth Contour          | ✈ Wrecks-Submerged    |
| □ Borrow Area                    | ★ Beacon, General     |
| ● Shoalest Sounding**            | ◆ Red Navigation Buoy |
| ◆ Green Navigation Buoy          |                       |

|                |              |
|----------------|--------------|
| 0' and above   | Green        |
| 0' to -5'      | Yellow       |
| -5' to -10'    | Orange       |
| -10' to -20'   | Light Blue   |
| -20' to -30'   | Blue         |
| -30' to -35'   | Dark Blue    |
| -35' to -40'   | Light Purple |
| -40' to -45'   | Dark Purple  |
| -45' and below | White        |



LWRP: 2.3  
 Gage Reading: BR:14.0 D:7.6 USED:12.9 NAVD  
 Sea Conditions: CALM  
 Vessel Name: M/V LAFORCHE  
 Survey Type: CS  
 Sounding Frequency\*\*\*: HIGH

**NOTES:**  
 Horizontal Coordinate System:  
 North American Datum of 1983 (NAD83), projected to the State Plane Coordinate System (SPCS), Louisiana South Zone. Distance units in U.S. Survey Feet.  
 Vertical Datum:  
 Soundings are shown in feet and indicate depths below Low Water Reference Plane 2007 (NAVD).  
 Distances on the Mississippi River, above and below Head of Passes are shown at 1 mile intervals.  
 The location of navigation aids are base on and provided by the U.S. Coast Guard and USACE crew.  
 2015 Aerial Photography data source: NAIP, USDA-FSA-APFO Aerial Photography Field Office.  
 Reference is N.O.A. Navigation Chart No. 11370.  
 \*\* Shoalest Sounding per Quarter per Reach.  
 \*\*\* High frequency (200 kHz) survey data represents the first signal return at a sounding location and will include suspended solids, known as "fluff", if present. Low frequency (20 kHz) survey data normally penetrates through this "fluff" layer to depict elevations of consolidated bottom material. Low frequency accuracies may vary depending on channel conditions and fathometer settings.

**Sheet Reference Number  
 6 of 97**