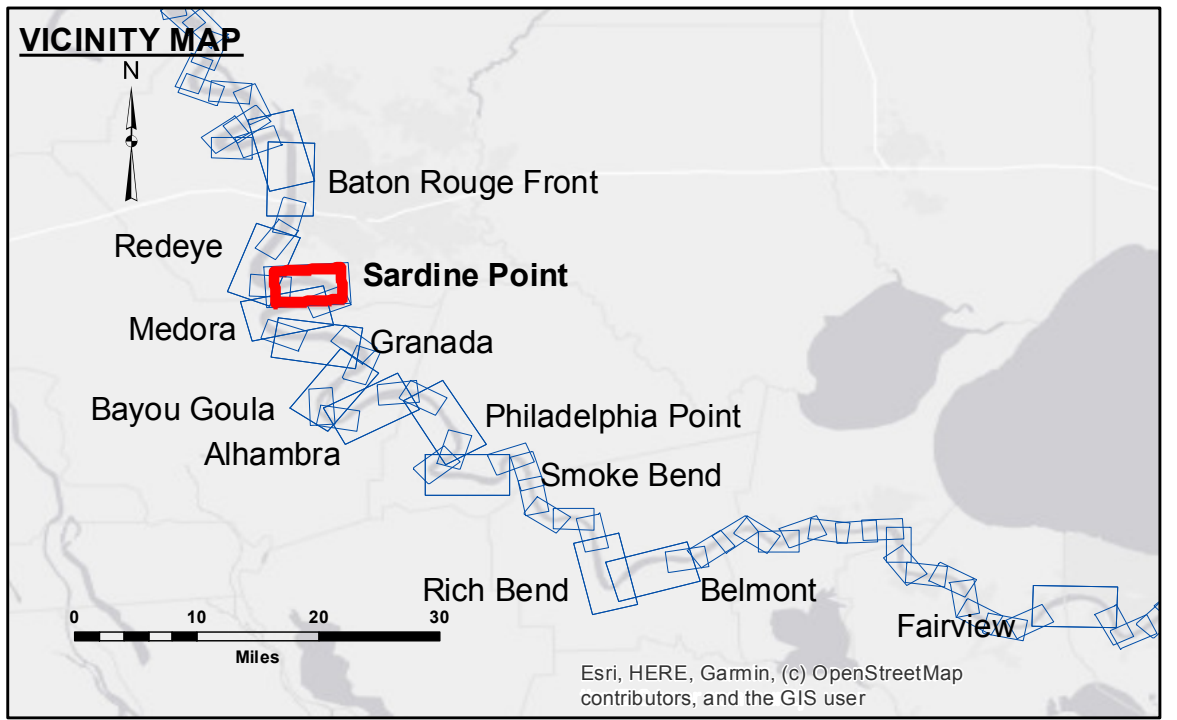


DISCLAIMER: The United States Government furnishes these data and the recipient accepts and uses them with the express understanding that the Government makes no warranty, expressed or implied, concerning the accuracy, completeness, reliability, usability or suitability for any particular purpose of the data. The user is responsible for the results of the use of the data. The application of the data for other than its intended purpose may result in injury, death or property damage. The user assumes all liability for such use. The information depicted on this map represents the results of a survey conducted on the date of the survey. The user is responsible for the results of the use of the data. The application of the data for other than its intended purpose may result in injury, death or property damage. The user assumes all liability for such use. The information depicted on this map represents the results of a survey conducted on the date of the survey. The user is responsible for the results of the use of the data. The application of the data for other than its intended purpose may result in injury, death or property damage. The user assumes all liability for such use.

U.S. ARMY CORPS OF ENGINEERS NEW ORLEANS DISTRICT		
Submitted:	Surveyed By: DS/DK	Plotted By: BD
Recommended: Chief, Survey Section	Checked By: AC	Approved By: Chief, Waterways Maintenance Section

**MISSISSIPPI RIVER - B.R. TO GULF
SARDINE POINT CROSSING
MD_06_SDP_20210222_CS
22 February 2021**



LEGEND		Bathymetry	
--- Federal Navigation Channel	○ Cable Area	Green	0' and above
— Federal Navigation Center Line	□ Placement Area	Yellow	0' to -5'
— As-built Pipeline/Cable	□ Anchorage Area	Orange	-5' to -10'
..... Unconfirmed Pipeline/Cable	⊗ Obstruction Point	Light Blue	-10' to -20'
— Project Depth Contour	★ Beacon, General	Blue	-20' to -30'
	◆ Red Navigation Buoy	Dark Blue	-30' to -35'
	◆ Green Navigation Buoy	Pink	-35' to -40'
	✈ Wrecks-Submerged	Light Purple	-40' to -45'
		White	-45' and below

LWRP: 2.3
Gage Reading: BR:19.4 D:11.8 USED:18.1 NAVD
Sea Conditions: CALM
Vessel Name: OB-189
Survey Type: CS
Sounding Frequency*:** HIGH

NOTES:
 Horizontal Coordinate System:
 North American Datum of 1983 (NAD83), projected to the State Plane Coordinate System (SPCS), Louisiana South Zone. Distance units in U.S. Survey Feet.
 Vertical Datum:
 Soundings are shown in feet and indicate depths below Low Water Reference Plane 2007 (NAVD).
 Distances on the Mississippi River, above and below Head of Passes are shown at 1 mile intervals.
 The location of navigation aids are base on and provided by the U.S. Coast Guard and USACE crew.
 2015 Aerial Photography data source: NAIP, USDA-FSA-APFO Aerial Photography Field Office.
 Reference is N.O.A.A. Navigation Chart No. 11370.
 *** Shoalest Sounding per Quarter per Reach.
 *** High frequency (200 kHz) survey data represents the first signal return at a sounding location and will include suspended solids, known as "fluff", if present. Low frequency (20 kHz) survey data normally penetrates through this "fluff" layer to depict elevations of consolidated bottom material. Low frequency accuracies may vary depending on channel conditions and bathymeter settings.

**Sheet Reference Number
6 of 97**