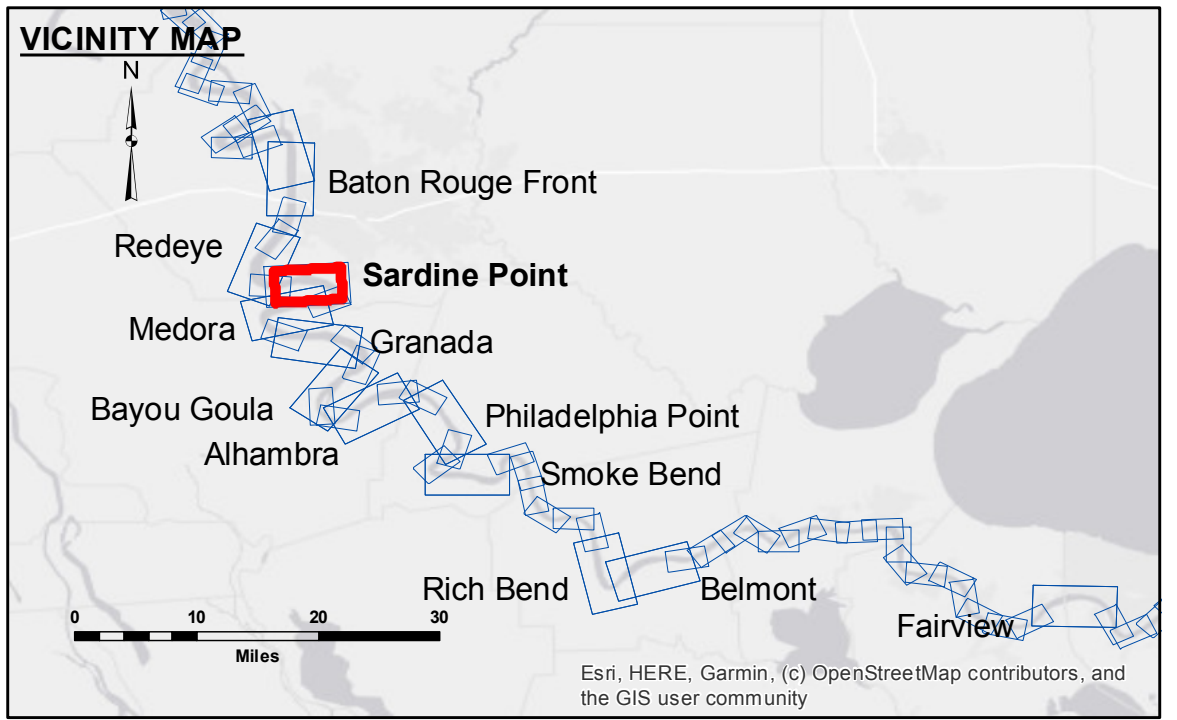


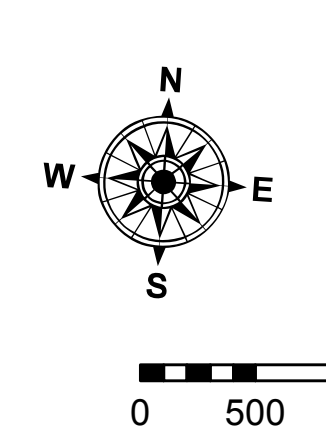
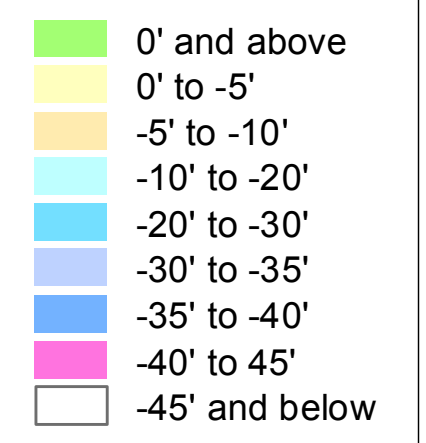
**DISCLAIMER:** The data represented on this map represents the results of a survey conducted by the U.S. Army Corps of Engineers. The data is not intended for use in any other application. The user is responsible for the results of any application of the data for other than its intended purpose. The information depicted on this map represents the results of a survey conducted by the U.S. Army Corps of Engineers. The data is not intended for use in any other application. The user is responsible for the results of any application of the data for other than its intended purpose.

U.S. ARMY CORPS OF ENGINEERS NEW ORLEANS DISTRICT	
Submitted:	RYLAND/ADAMS
Recommended:	Checked By: AC
Plotted By: BD	Checked By: AC

**MISSISSIPPI RIVER - B.R. TO GULF  
SARDINE POINT CROSSING  
MD\_06\_SDP\_20210420\_CS  
20 April 2021**



LEGEND	
--- Federal Navigation Channel	○ Cable Area
— Federal Navigation Center Line	□ Placement Area
— As-built Pipeline/Cable	□ Anchorage Area
..... Unconfirmed Pipeline/Cable	⊗ Obstruction Point
— Project Depth Contour	✈ Wrecks-Submerged
□ Borrow Area	★ Beacon, General
● Shoalest Sounding**	◆ Red Navigation Buoy
◆ Green Navigation Buoy	



LWRP: 2.3  
 Gage Reading: BR:37.0 D:26.0 USED:35.10 NAVD  
 Sea Conditions: CALM  
 Vessel Name: M/V VALENTOUR  
 Survey Type: CONDITION  
 Sounding Frequency\*\*\*: HIGH

**NOTES:**  
 Horizontal Coordinate System:  
 North American Datum of 1983 (NAD83), projected to the State Plane  
 Coordinate System (SPCS), Louisiana South Zone. Distance units in U.S. Survey Feet.  
 Vertical Datum:  
 Soundings are shown in feet and indicate depths below Low Water Reference Plane 2007 (NAVD).  
 Distances on the Mississippi River, above and below Head of Passes are shown  
 at 1 mile intervals.  
 The location of navigation aids are base on and provided by the U.S. Coast Guard and USACE crew.  
 2015 Aerial Photography data source: NAIP, USDA-FSA-APFO Aerial Photography Field Office.  
 Reference is N.O.A. Navigation Chart No. 11370.  
 \*\* Shoalest Sounding per Quarter per Reach.  
 \*\*\* High frequency (200 kHz) survey data represents the first signal return at a sounding  
 location and will include suspended solids, known as "fluff", if present. Low frequency (20 kHz)  
 survey data normally penetrates through this "fluff" layer to depict elevations of consolidated bottom  
 material. Low frequency accuracies may vary depending on channel conditions and fathometer  
 settings.

**Sheet  
Reference  
Number  
6 of 97**