

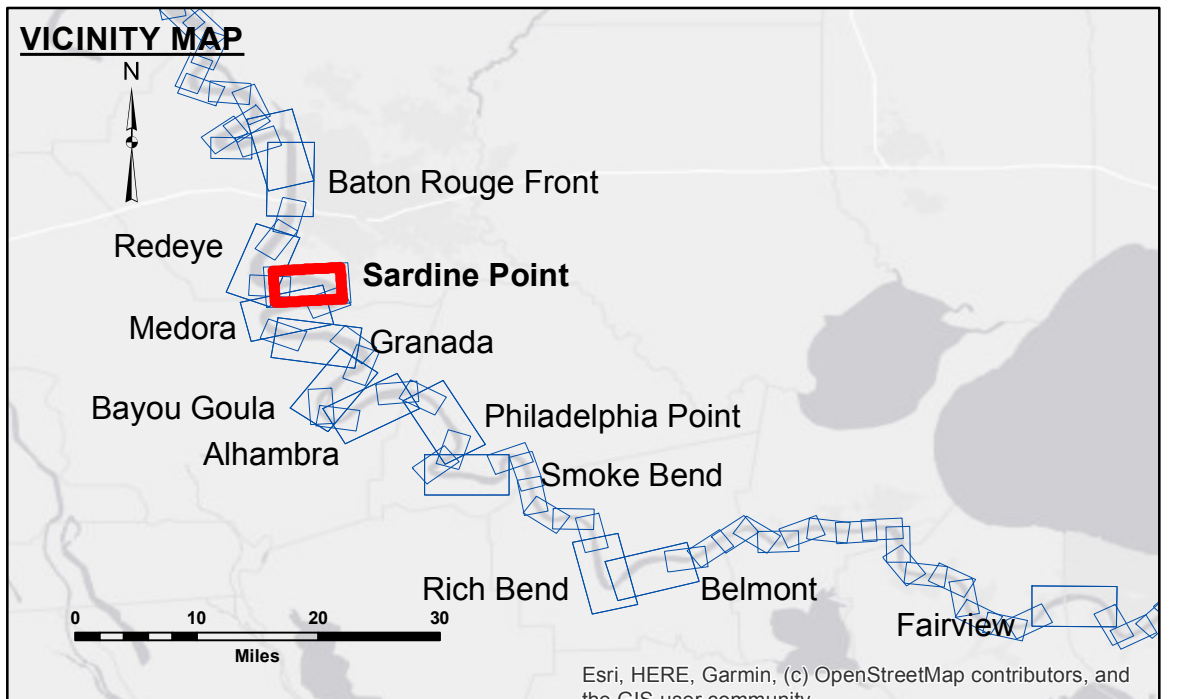
**Accession:** The United States Government Lend-Lease Administration and the War Relocation Authority. The data represents the results of data collection for a specific US Army Corps of Engineers project. It is only valid for the intended use, contract, time and accuracy specifications. The user is responsible for the results of the application of the data for other than its intended purpose.

**Disclaimer:** The data represents the results of a survey conducted by the US Army Corps of Engineers. The data is subject to change due to several factors including but not limited to changing hydrographic conditions, changes in the hydrographic conditions which develop after the date of the survey, and changes in the data. The user is responsible for the results of the data. The user is responsible for the results of the data. The user is responsible for the results of the data.

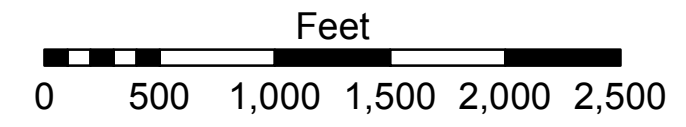
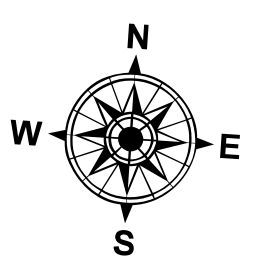
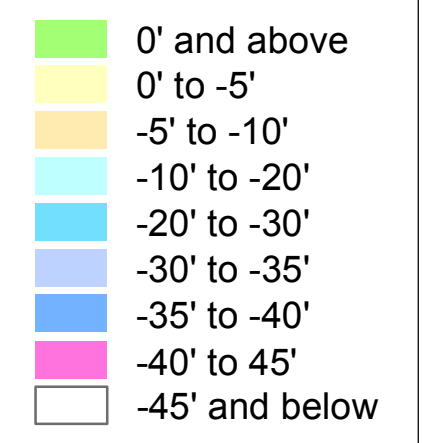
Submitted:	Surveyed By: DJS/SJS
Recommended: Chief Survey Section	Plotted By: BD
Approved: Chief Waterways Maintenance Section	Checked By: AC

U.S. ARMY CORPS OF ENGINEERS  
NEW ORLEANS DISTRICT

**MISSISSIPPI RIVER - B.R. TO GULF  
SARDINE POINT CROSSING  
MD\_06\_SDP\_20210609\_CS  
09 June 2021**



LEGEND	
--- Federal Navigation Channel	○ Cable Area
— Federal Navigation Center Line	□ Placement Area
— As-built Pipeline/Cable	□ Anchorage Area
..... Unconfirmed Pipeline/Cable	⊗ Obstruction Point
— Project Depth Contour	✈ Wrecks-Submerged
□ Borrow Area	★ Beacon, General
● Shoalest Sounding**	◆ Red Navigation Buoy
◆ Green Navigation Buoy	



LWRP: 2.3  
Gage Reading: BR:26.8 D:17.5 USED:25.3 NAVD  
Sea Conditions: CALM  
Vessel Name: LAFORUCHE  
Survey Type: CS  
Sounding Frequency\*\*\*: HIGH

**NOTES:**  
Horizontal Coordinate System: North American Datum of 1983 (NAD83), projected to the State Plane Coordinate System (SPCS), Louisiana South Zone. Distance units in U.S. Survey Feet.  
Vertical Datum: Soundings are shown in feet and indicate depths below Low Water Reference Plane 2007 (NAVD).  
Distances on the Mississippi River, above and below Head of Passes are shown at 1 mile intervals.  
The location of navigation aids are based on and provided by the U.S. Coast Guard and USACE crew.  
2015 Aerial Photography data source: NAIP, USDA-FSA-APFO Aerial Photography Field Office.  
Reference is N.O.A.A. Navigation Chart No. 11370.  
\*\* Shoalest Sounding per Quarter per Reach.  
\*\*\* High frequency (200 kHz) survey data represents the first signal return at a sounding location and will include suspended solids, known as "fluff", if present. Low frequency (20 kHz) survey data normally penetrates through this "fluff" layer to depict elevations of consolidated bottom material. Low frequency accuracies may vary depending on channel conditions and fathometer settings.

**Sheet Reference Number  
6 of 97**