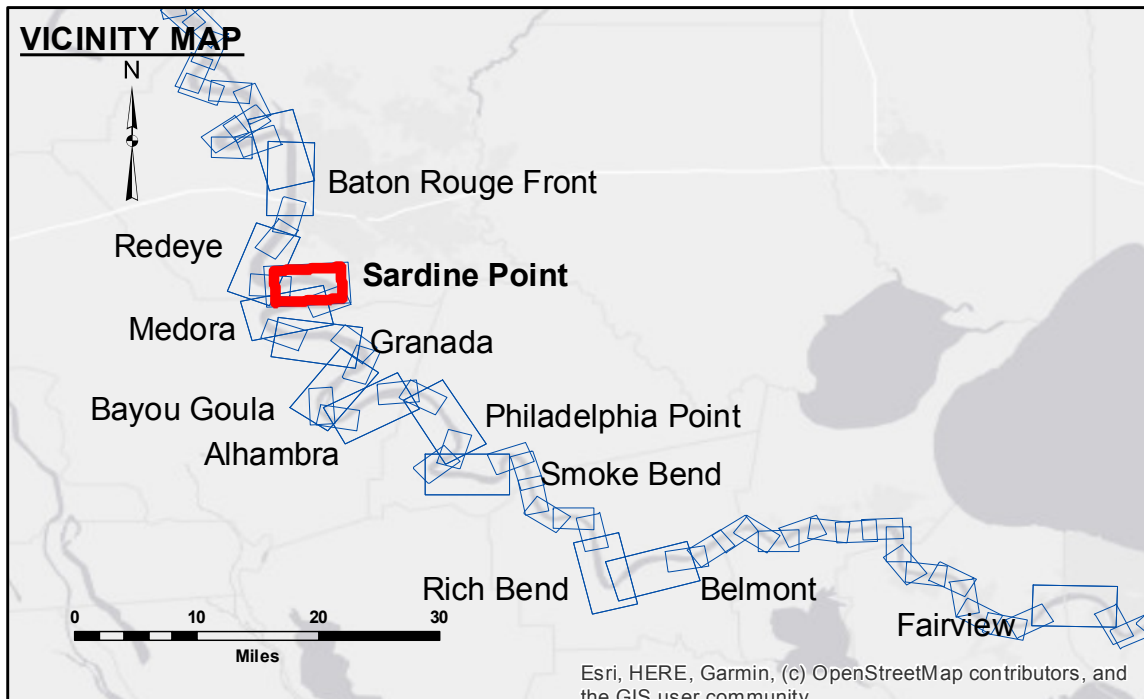


DISCLAIMER: The data represented on this map is the property of the United States Government and is provided to you for informational purposes only. The data is not to be used for navigation or other purposes without the express written consent of the United States Government. The user is responsible for the accuracy, reliability, usability, or suitability of the data for any particular purpose. The user is not to be held liable for any damages, including consequential damages, arising from the use of the data. The user is advised to verify the data for their own use. The information depicted on this map represents the results of a survey conducted by the United States Army Corps of Engineers and is not to be used for navigation or other purposes without the express written consent of the United States Government. The user is responsible for the accuracy, reliability, usability, or suitability of the data for any particular purpose. The user is not to be held liable for any damages, including consequential damages, arising from the use of the data. The user is advised to verify the data for their own use.

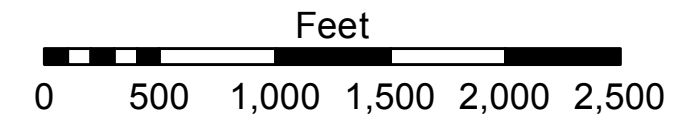
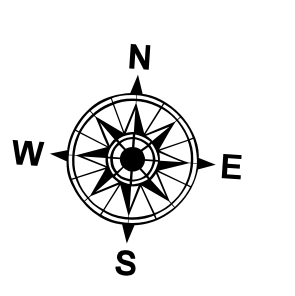
| | |
|--|--------------------|
| U.S. ARMY CORPS OF ENGINEERS NEW ORLEANS DISTRICT | |
| Submitted: | Surveyed By: SP/PS |
| Recommended: | Plotted By: AO |
| Approved: | Checked By: AC |

**MISSISSIPPI RIVER - B.R. TO GULF
SARDINE POINT CROSSING**
MD_06_SDP_20210904_CS_25X25_POSTIDA
04 September 2021

Sheet Reference Number
6 of 97



| LEGEND | | |
|----------------------------------|---------------------|-------------------------|
| --- Federal Navigation Channel | ● Cable Area | ■ Borrow Area |
| — Federal Navigation Center Line | □ Placement Area | ● Shoalest Sounding** |
| — As-built Pipeline/Cable | ⊗ Anchorage Area | ☆ Beacon, General |
| ⋯ Unconfirmed Pipeline/Cable | ⊗ Obstruction Point | ◆ Red Navigation Buoy |
| — Project Depth Contour | ✈ Wrecks-Submerged | ◆ Green Navigation Buoy |
| | | ■ 0' and above |
| | | ■ 0' to -5' |
| | | ■ -5' to -10' |
| | | ■ -10' to -20' |
| | | ■ -20' to -30' |
| | | ■ -30' to -35' |
| | | ■ -35' to -40' |
| | | ■ -40' to -45' |
| | | ■ -45' and below |



LWRP: 2.3
Gage Reading: 10.9 NAVD
Sea Conditions: CALM
Vessel Name: OB-169
Survey Type: CONDITION
Sounding Frequency***: 400KHZ

NOTES:
Horizontal Coordinate System:
North American Datum of 1983 (NAD83), projected to the State Plane Coordinate System (SPCS), Louisiana South Zone. Distance units in U.S. Survey Feet.
Vertical Datum:
Soundings are shown in feet and indicate depths below Low Water Reference Plane 2007 (NAVD).
Distances on the Mississippi River, above and below Head of Passes are shown at 1 mile intervals.
The location of navigation aids are based on and provided by the U.S. Coast Guard and USACE crew.
2015 Aerial Photography data source: NAIP, USDA-FSA-APFO Aerial Photography Field Office.
Reference is N.O.A.A. Navigation Chart No. 11370.
** Shoalest Sounding per Quarter per Reach.
*** High frequency (200 kHz) survey data represents the first signal return at a sounding location and will include suspended solids, known as "fluff", if present. Low frequency (20 kHz) survey data normally penetrates through this "fluff" layer to depict elevations of consolidated bottom material. Low frequency accuracies may vary depending on channel conditions and bathymeter settings.