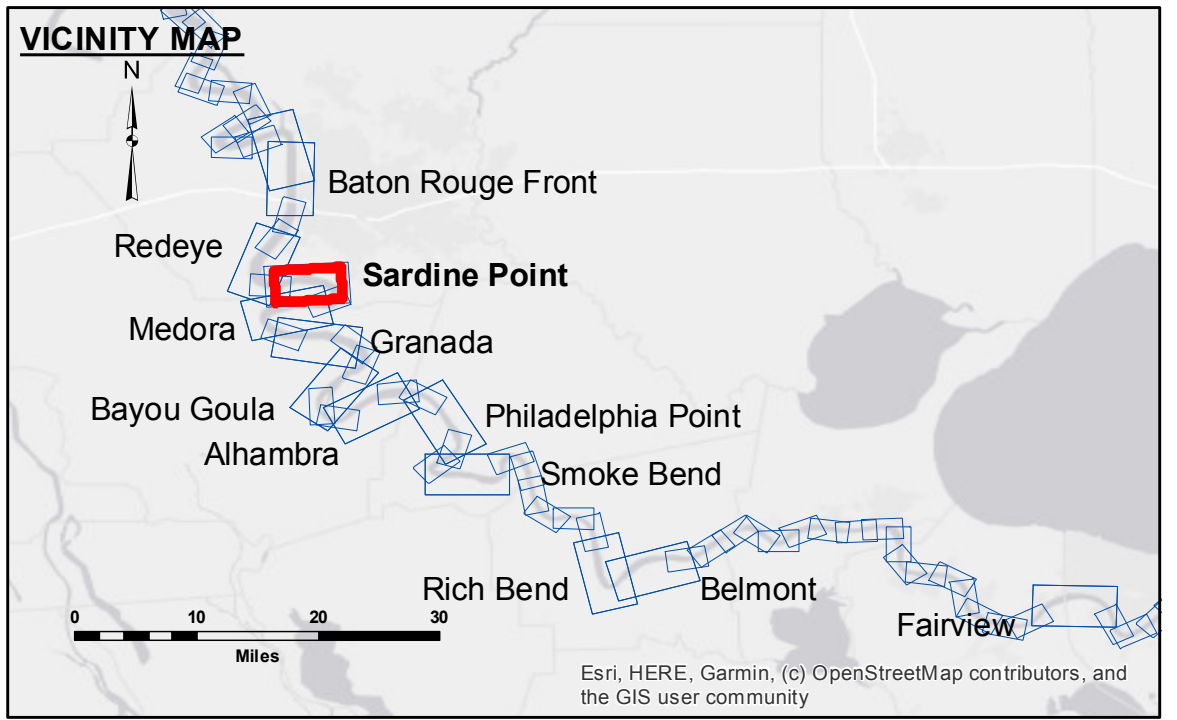


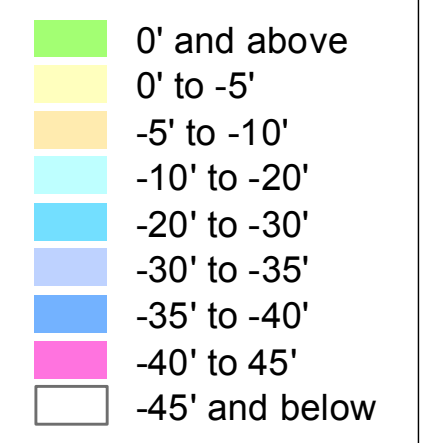
DISCLAIMER: The United States Government furnishes these data and the recipient accepts and uses them with the express understanding that the data are not to be used for any purpose other than that for which they were prepared, and that the Government makes no warranty, expressed or implied, concerning the accuracy, completeness, reliability, usability or suitability for any particular purpose of the data. The user is responsible for the results of the application of the data for other than its intended purpose. Data Constraints: Hydrographic survey data is subject to change rapidly due to several factors including but not limited to dredging, sedimentation, and channel migration. The user is responsible for the hydrographic conditions which develop after the date of the survey. The information depicted on this map represents the results of a survey conducted on the date of the survey. The Corps of Engineers does not warrant the accuracy of the information to represent the general condition existing at that time. Product maintainers should not rely solely on this information.

U.S. ARMY CORPS OF ENGINEERS NEW ORLEANS DISTRICT	
Submitted:	RYLAND/SONNIER
Recommended:	Chief, Survey Section
Plotted By:	BD
Checked By:	AC

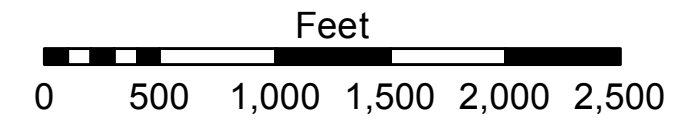
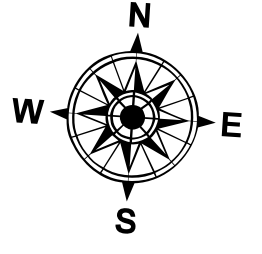
**MISSISSIPPI RIVER - B.R. TO GULF
SARDINE POINT CROSSING
MD_06_SDP_20210919_CS
19 September 2021**



LEGEND	
--- Federal Navigation Channel	○ Cable Area
— Federal Navigation Center Line	□ Placement Area
— As-built Pipeline/Cable	□ Anchorage Area
..... Unconfirmed Pipeline/Cable	⊗ Obstruction Point
— Project Depth Contour	✈ Wrecks-Submerged
□ Borrow Area	★ Beacon, General
● Shoalest Sounding**	◆ Red Navigation Buoy
◆ Green Navigation Buoy	



LWRP: 2.3
 Gage Reading: BR:12.4 D:6.6 USED:11.40 NAVD
 Sea Conditions: CALM
 Vessel Name: OB-189
 Survey Type: CONDITION
 Sounding Frequency***: HIGH



NOTES:
 Horizontal Coordinate System:
 North American Datum of 1983 (NAD83), projected to the State Plane Coordinate System (SPCS), Louisiana South Zone. Distance units in U.S. Survey Feet.
 Vertical Datum:
 Soundings are shown in feet and indicate depths below Low Water Reference Plane 2007 (NAVD).
 Distances on the Mississippi River, above and below Head of Passes are shown at 1 mile intervals.
 The location of navigation aids are based on and provided by the U.S. Coast Guard and USACE crew.
 2015 Aerial Photography data source: NAIP, USDA-FSA-APFO Aerial Photography Field Office.
 Reference is N.O.A.A. Navigation Chart No. 11370.
 ** Shoalest Sounding per Quarter per Reach.
 *** High frequency (200 kHz) survey data represents the first signal return at a sounding location and will include suspended solids, known as "fluff", if present. Low frequency (20 kHz) survey data normally penetrates through this "fluff" layer to depict elevations of consolidated bottom material. Low frequency accuracies may vary depending on channel conditions and bathymeter settings.

**Sheet Reference Number
6 of 97**