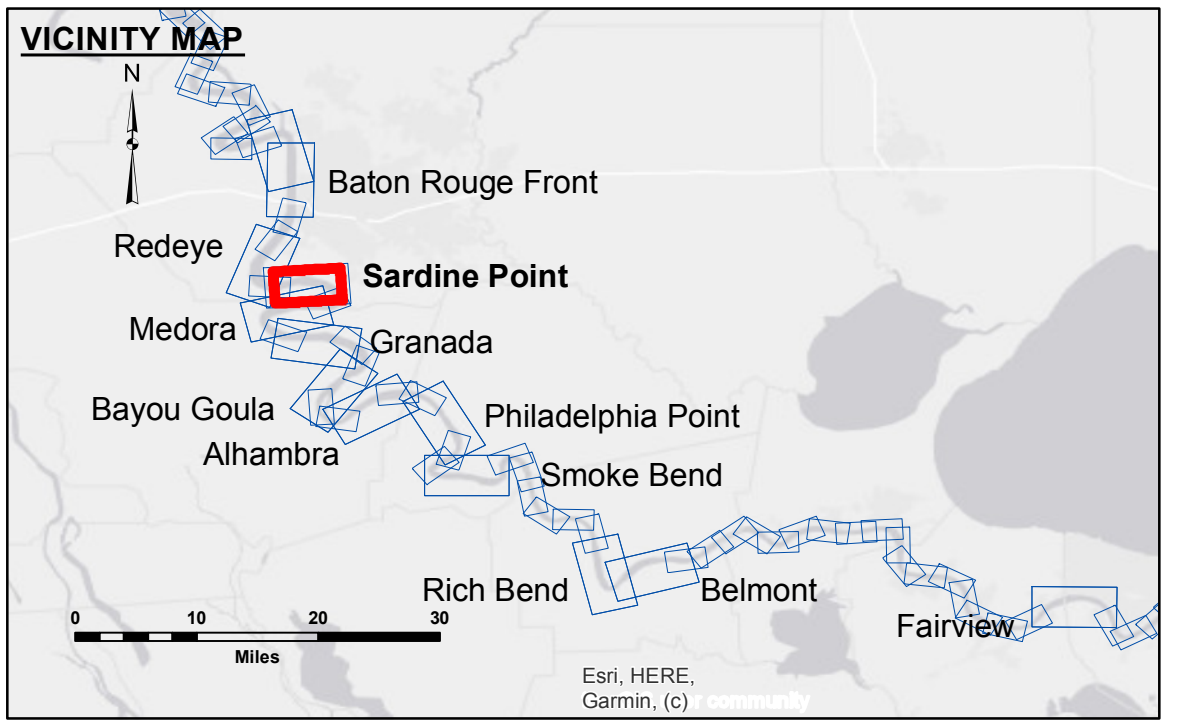


**DISCLAIMER**  
 The information depicted on this map represents the results of a survey conducted by the U.S. Army Corps of Engineers. It is not intended to be used for any purpose other than that for which it was prepared. The user is responsible for the accuracy, completeness, and reliability of the information derived from this map. The U.S. Army Corps of Engineers does not warrant the accuracy, completeness, or reliability of the information derived from this map. The user is responsible for the accuracy, completeness, and reliability of the information derived from this map. The U.S. Army Corps of Engineers does not warrant the accuracy, completeness, or reliability of the information derived from this map.

U.S. ARMY CORPS OF ENGINEERS NEW ORLEANS DISTRICT		
Submitted:	Surveyed By: RYLAND/ADAMS	Plotted By: JHI
Recommended:	Chief, Survey Section	Checked By: JHI
Approved:	Chief, Waterways Maintenance Section	

**MISSISSIPPI RIVER - B.R. TO GULF**  
**SARDINE POINT CROSSING**  
 MD\_06\_SDP\_20220405\_CS  
 05 April 2022



LEGEND		Depth Contours	
--- Federal Navigation Channel	○ Cable Area	█ 0' and above	█ 0' to -5'
— Federal Navigation Center Line	□ Placement Area	█ -5' to -10'	█ -10' to -20'
— As-built Pipeline/Cable	□ Anchorage Area	█ -20' to -30'	█ -30' to -35'
..... Unconfirmed Pipeline/Cable	⊗ Obstruction Point	█ -35' to -40'	█ -40' to 45'
— Project Depth Contour	✈ Wrecks-Submerged	█ -45' and below	
	□ Borrow Area		
	● Shoalest Sounding**		
	★ Beacon, General		
	◆ Red Navigation Buoy		
	◆ Green Navigation Buoy		

**LWRP:** 2.3  
**Gage Reading:** BR:32.7 D:22.3 USED: 30.90 NAVD  
**Sea Conditions:** CALM  
**Vessel Name:** M/V VALENTOUR  
**Survey Type:** CONDITION  
**Sounding Frequency\*\*\*:** HIGH

**NOTES:**  
 Horizontal Coordinate System:  
 North American Datum of 1983 (NAD83), projected to the State Plane Coordinate System (SPCS), Louisiana South Zone. Distance units in U.S. Survey Feet.  
 Vertical Datum:  
 Soundings are shown in feet and indicate depths below Low Water Reference Plane 2007 (NAVD).  
 Distances on the Mississippi River, above and below Head of Passes are shown at 1 mile intervals.  
 The location of navigation aids are based on and provided by the U.S. Coast Guard and USACE crew.  
 2015 Aerial Photography data source: NAIP, USDA-FSA-APFO Aerial Photography Field Office.  
 Reference is N.O.A. Navigation Chart No. 11370.  
 \*\* Shoalest Sounding per Quarter per Reach.  
 \*\*\* High frequency (200 kHz) survey data represents the first signal return at a sounding location and will include suspended solids, known as "fluff", if present. Low frequency (20 kHz) survey data normally penetrates through this "fluff" layer to depict elevations of consolidated bottom material. Low frequency accuracies may vary depending on channel conditions and fathometer settings.

**Sheet Reference Number**  
 6 of 97  
 Revision Number:  
 4.2-20230420