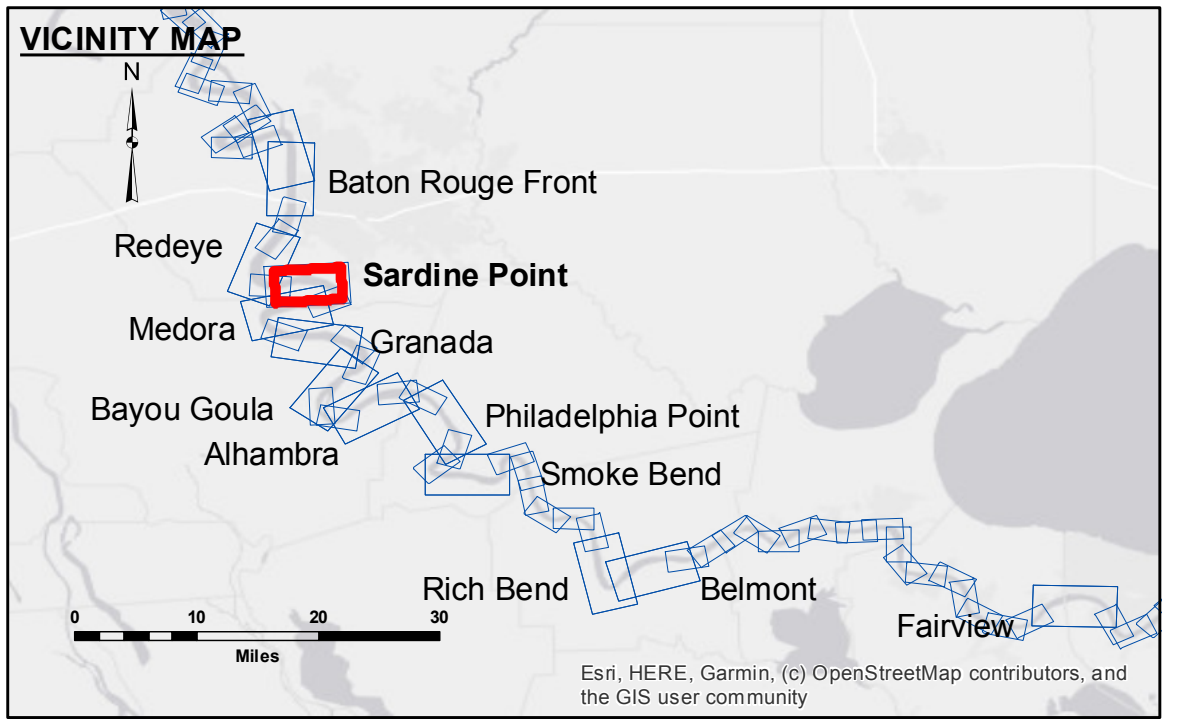


**DISCLAIMER:** The United States Government furnishes these data and the recipient accepts and uses them with the express understanding that the data are not warranted for any purpose other than that for which they were collected. The user is responsible for the results of any use of the data for other than the intended purpose. The application of the data for other than the intended purpose is at the user's risk. The data are not to be used for any purpose other than that for which they were collected. The data are not to be used for any purpose other than that for which they were collected. The data are not to be used for any purpose other than that for which they were collected.

|  |                                      |                   |
|--|--------------------------------------|-------------------|
| U.S. ARMY CORPS OF ENGINEERS<br>NEW ORLEANS DISTRICT |                                      |                   |
| Submitted:   | Surveyed By:<br>RYLAND/ADAMS         | Plotted By:<br>BD |
| Recommended:<br>Chief, Survey Section                | Checked By:<br>AC                    | Checked By:<br>AC |
| Approved:  | Chief, Waterways Maintenance Section |                   |

**MISSISSIPPI RIVER - B.R. TO GULF  
SARDINE POINT CROSSING  
MD\_06\_SDP\_20220714\_CS  
14 July 2022**



| LEGEND                           |                         |
|----------------------------------|-------------------------|
| --- Federal Navigation Channel   | ○ Cable Area            |
| — Federal Navigation Center Line | □ Placement Area        |
| — As-built Pipeline/Cable        | □ Anchorage Area        |
| ..... Unconfirmed Pipeline/Cable | ⊗ Obstruction Point     |
| — Project Depth Contour          | ★ Beacon, General       |
|                                  | ◆ Red Navigation Buoy   |
|                                  | ◆ Green Navigation Buoy |
|                                  | □ Borrow Area           |
|                                  | ● Shoalest Sounding**   |
|                                  | 0' and above            |
|                                  | 0' to -5'               |
|                                  | -5' to -10'             |
|                                  | -10' to -20'            |
|                                  | -20' to -30'            |
|                                  | -30' to -35'            |
|                                  | -35' to -40'            |
|                                  | -40' to -45'            |
|                                  | -45' and below          |

LWRP: 2.3  
Gage Reading: BR:8.7 D:4.1 USED:7.90 NAVD  
Sea Conditions: CALM  
Vessel Name: M/V VALENTOUR  
Survey Type: CONDITION  
Sounding Frequency\*\*\*: HIGH

Vertical Datum:  
Soundings are shown in feet and indicate depths below Low Water Reference Plane 2007 (NAVD).  
Distances on the Mississippi River, above and below Head of Passes are shown at 1 mile intervals.

The location of navigation aids are base on and provided by the U.S. Coast Guard and USACE crew.  
2015 Aerial Photography data source: NAIP, USDA-FSA-APFO Aerial Photography Field Office.

Reference is N.O.A.A. Navigation Chart No. 11370.  
\*\* Shoalest Sounding per Quarter per Reach.  
\*\*\* High frequency (200 kHz) survey data represents the first signal return at a sounding location and will include suspended solids, known as "fluff", if present. Low frequency (20 kHz) survey data normally penetrates through this "fluff" layer to depict elevations of consolidated bottom material. Low frequency accuracies may vary depending on channel conditions and fathometer settings.

**Sheet Reference Number  
6 of 97**