

Accession: The United States Government Lend-Lease Administration and the War Relocation Authority. The data represents the results of data collection for a specific US Army Corps of Engineers project. It is only valid for the intended use, context, time and accuracy specifications. The user is responsible for the results and the application of the data for other than its intended purpose.

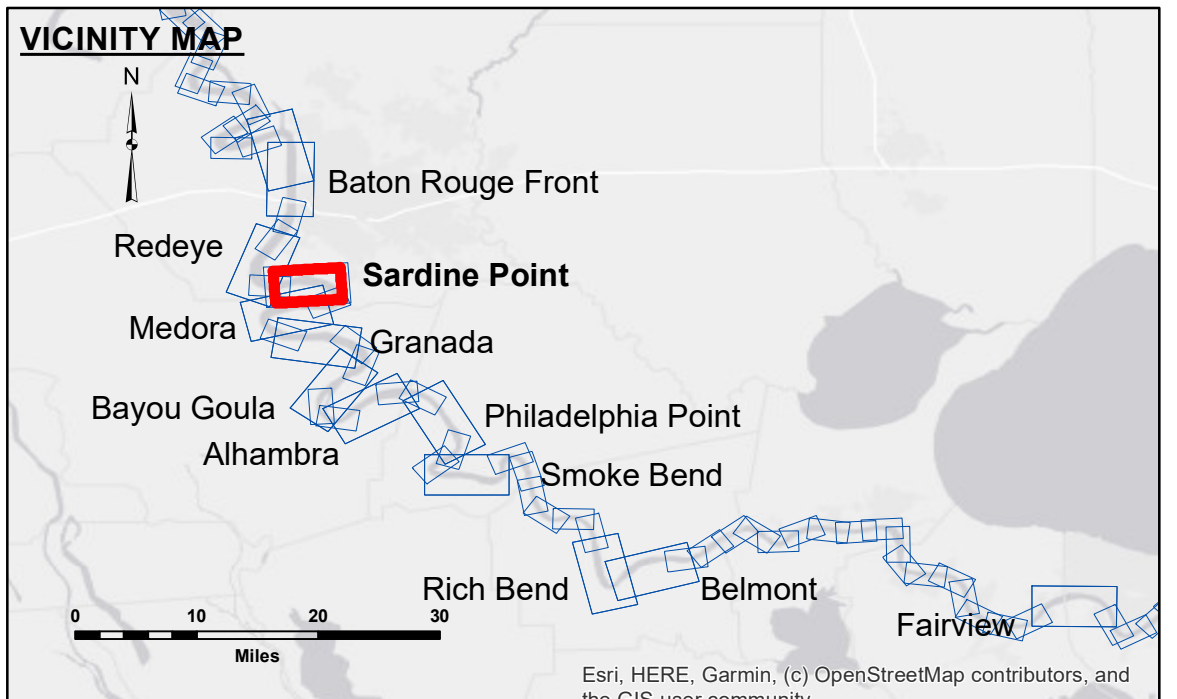
Disclaimer: The data represents the results of data collection for a specific US Army Corps of Engineers project. It is only valid for the intended use, context, time and accuracy specifications. The user is responsible for the results and the application of the data for other than its intended purpose.

Liability: The data represents the results of data collection for a specific US Army Corps of Engineers project. It is only valid for the intended use, context, time and accuracy specifications. The user is responsible for the results and the application of the data for other than its intended purpose.

Submitted:	SPSR
Recommended:	JH
Approved:	JH

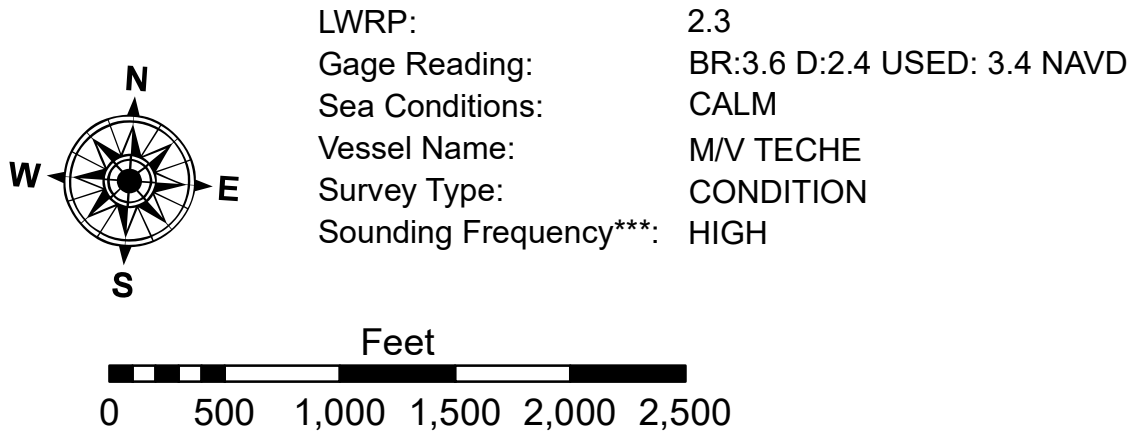
U.S. ARMY CORPS OF ENGINEERS
NEW ORLEANS DISTRICT

**MISSISSIPPI RIVER - B.R. TO GULF
SARDINE POINT CROSSING
MD_06_SDP_20221102_CS
02 November 2022**



LEGEND

--- Federal Navigation Channel	○ Cable Area	□ Borrow Area	■ 0' and above
— Federal Navigation Center Line	▭ Placement Area	● Shoalest Sounding**	■ 0' to -5'
— As-built Pipeline/Cable	⊗ Anchorage Area	★ Beacon, General	■ -5' to -10'
..... Unconfirmed Pipeline/Cable	⊗ Obstruction Point	◆ Red Navigation Buoy	■ -10' to -20'
— Project Depth Contour	✈ Wrecks-Submerged	◆ Green Navigation Buoy	■ -20' to -30'
			■ -30' to -35'
			■ -35' to -40'
			■ -40' to -45'
			■ -45' and below



NOTES:

Horizontal Coordinate System:
North American Datum of 1983 (NAD83), projected to the State Plane Coordinate System (SPCS), Louisiana South Zone. Distance units in U.S. Survey Feet.

Vertical Datum:
Soundings are shown in feet and indicate depths below Low Water Reference Plane 2007 (NAVD).

Distances on the Mississippi River, above and below Head of Passes are shown at 1 mile intervals.

The location of navigation aids are based on and provided by the U.S. Coast Guard and USACE crew.

2015 Aerial Photography data source: NAIP, USDA-FSA-APFO Aerial Photography Field Office.

Reference is N.O.A. Navigation Chart No. 11370.

** Shoalest Sounding per Quarter per Reach.

*** High frequency (200 kHz) survey data represents the first signal return at a sounding location and will include suspended solids, known as "fluff", if present. Low frequency (20 kHz) survey data normally penetrates through this "fluff" layer to depict elevations of consolidated bottom material. Low frequency accuracies may vary depending on channel conditions and fathometer settings.

**Sheet Reference Number
6 of 97**