

**Accession:** The United States Government Lend-Lease Act, 1941, authorizes the use of these data and the recipient accepts and uses them with the express understanding that the data are for informational purposes only and are not to be used for any purpose other than that for which they were originally intended. The user is responsible for the results of any application of the data for other than its intended purpose.

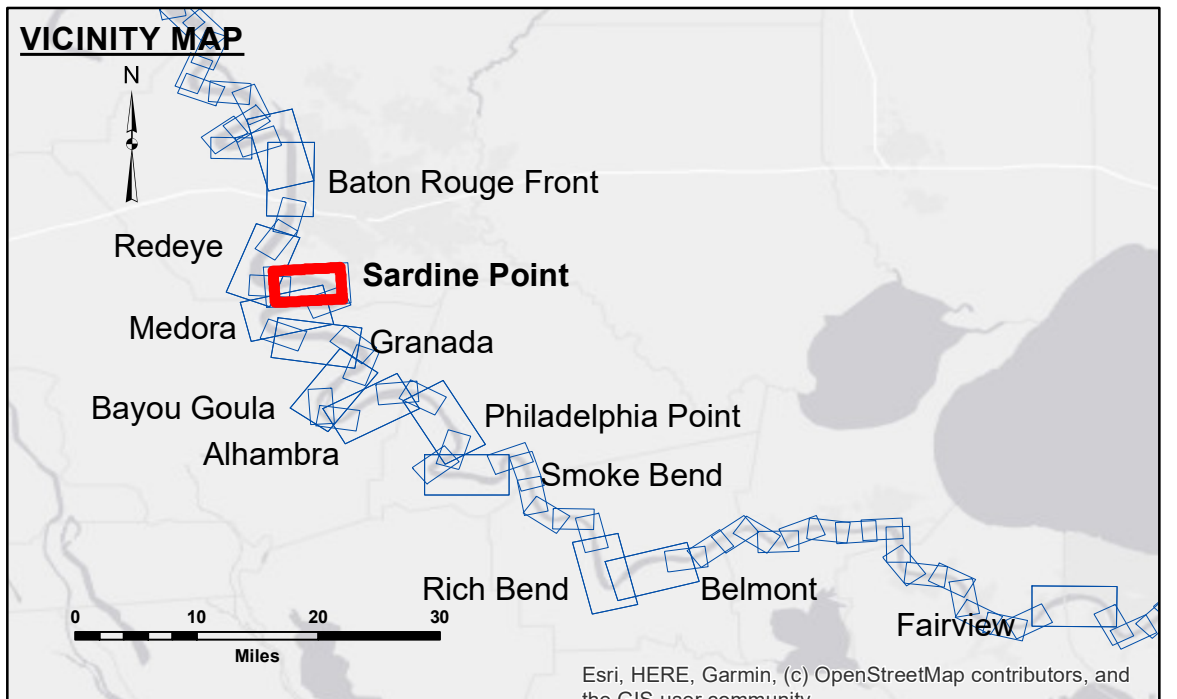
**Accuracy:** The data were collected using a surveying instrument with a stated accuracy of 1:50,000. The user is responsible for the results of any application of the data for other than its intended purpose.

**Disclaimer:** The data are not to be used for any purpose other than that for which they were originally intended. The user is responsible for the results of any application of the data for other than its intended purpose.

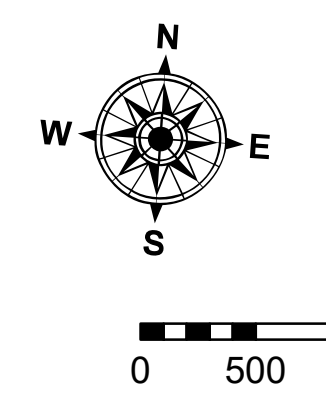
Submitted:	Surveyed By: RYLAND/SIMMONS
Recommended:	Plotted By: JH
Approved:	Checked By: JH

U.S. ARMY CORPS OF ENGINEERS  
NEW ORLEANS DISTRICT

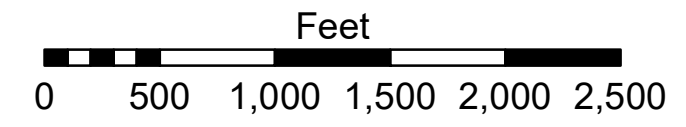
**MISSISSIPPI RIVER - B.R. TO GULF  
SARDINE POINT CROSSING  
MD\_06\_SDP\_20230628\_CS  
28 June 2023**



LEGEND	
--- Federal Navigation Channel	● Cable Area
— Federal Navigation Center Line	□ Placement Area
— As-built Pipeline/Cable	□ Anchorage Area
..... Unconfirmed Pipeline/Cable	⊗ Obstruction Point
— Project Depth Contour	✈ Wrecks-Submerged
□ Borrow Area	★ Beacon, General
● Shoalest Sounding**	◆ Red Navigation Buoy
◆ Green Navigation Buoy	



LWRP: 2.3  
Gage Reading: BR:6.8 D:3.3 USED: 6.20 NAVD  
Sea Conditions: CALM  
Vessel Name: LAFORCHE  
Survey Type: CS  
Sounding Frequency\*\*\*: HIGH



**NOTES:**  
Horizontal Coordinate System:  
North American Datum of 1983 (NAD83), projected to the State Plane Coordinate System (SPCS), Louisiana South Zone. Distance units in U.S. Survey Feet.

Vertical Datum:  
Soundings are shown in feet and indicate depths below Low Water Reference Plane 2007 (NAVD).

Distances on the Mississippi River, above and below Head of Passes are shown at 1 mile intervals.

The location of navigation aids are based on and provided by the U.S. Coast Guard and USACE crew.

2015 Aerial Photography data source: NAIP, USDA-FSA-APFO Aerial Photography Field Office.

Reference is N.O.A. Navigation Chart No. 11370.

\*\* Shoalest Sounding per Quarter per Reach.

\*\*\* High frequency (200 kHz) survey data represents the first signal return at a sounding location and will include suspended solids, known as "fluff", if present. Low frequency (20 kHz) survey data normally penetrates through this "fluff" layer to depict elevations of consolidated bottom material. Low frequency accuracies may vary depending on channel conditions and fathometer settings.

**Sheet Reference Number  
6 of 97**

Revision Number:  
4.2-20230420