

Accession: The United States Government furnishes these data and the recipient accepts and uses them with the express understanding that the data are not to be used for any purpose other than that for which they were originally prepared, and that the user is responsible for the results of any use of the data for other than its intended purpose.

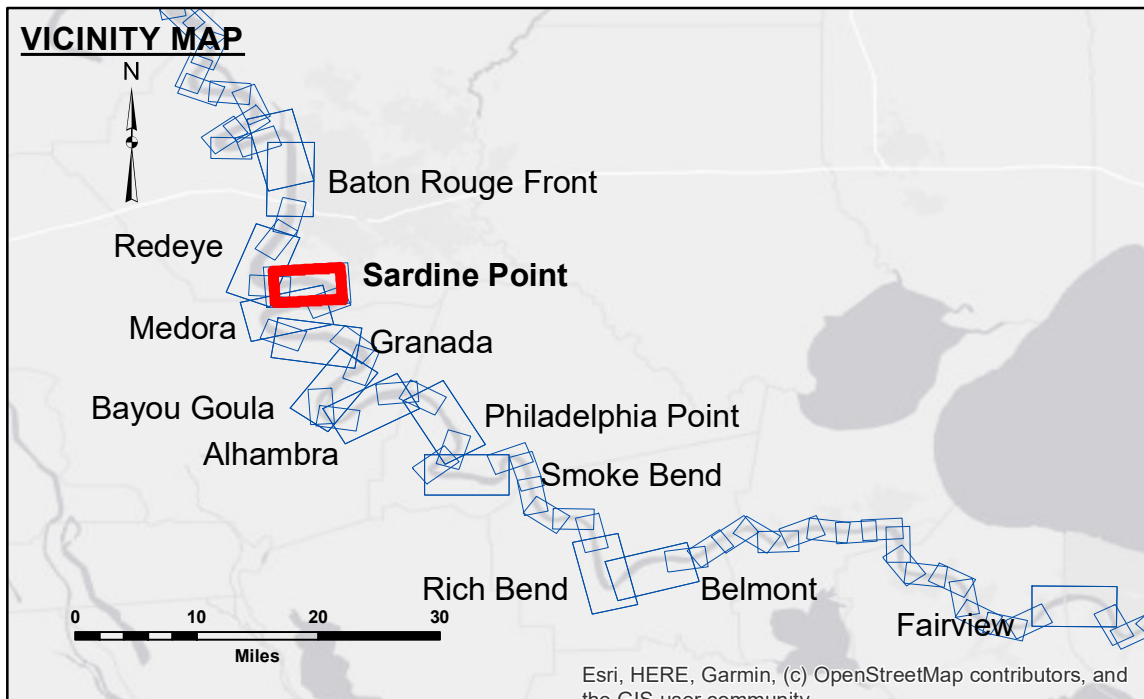
Distribution Liability: The data represents the results of data collection for a specific US Army Corps of Engineers project. It is only valid for its intended use, content, time and accuracy specifications. The user is responsible for the results of any use of the data for other than its intended purpose.

Data Accuracy: Hydrographic survey data is subject to change rapidly due to several factors including but not limited to changing channel conditions, sedimentation, and other factors. The user is responsible for the results of any use of the data for other than its intended purpose.

Disclaimer: The information depicted on this map represents the results of a survey conducted by the United States Army Corps of Engineers. The Corps of Engineers does not warrant the accuracy of the information depicted on this map, and it is not to be used for any purpose other than that for which it was originally prepared.

| | |
|--|--------------------------------|
| U.S. ARMY CORPS OF ENGINEERS NEW ORLEANS DISTRICT | |
| Submitted: | Surveyed By: RYLAND/SIMMONS |
| Recommended: | Plotted By: JH |
| Approved: | Checked By: JH |

**MISSISSIPPI RIVER - B.R. TO GULF
SARDINE POINT CROSSING
MD_06_SDP_20231213_CS
13 December 2023**



| LEGEND | |
|----------------------------------|-----------------------|
| --- Federal Navigation Channel | ○ Cable Area |
| — Federal Navigation Center Line | □ Placement Area |
| — As-built Pipeline/Cable | □ Anchorage Area |
| Unconfirmed Pipeline/Cable | ⊗ Obstruction Point |
| — Project Depth Contour | ✈ Wrecks-Submerged |
| □ Borrow Area | ★ Beacon, General |
| ● Shoalest Sounding** | ◆ Red Navigation Buoy |
| ◆ Green Navigation Buoy | |

NOTES:

Horizontal Coordinate System:
North American Datum of 1983 (NAD83), projected to the State Plane Coordinate System (SPCS), Louisiana South Zone. Distance units in U.S. Survey Feet.

Vertical Datum:
Soundings are shown in feet and indicate depths below Low Water Reference Plane 2007 (NAVD).

The location of navigation aids are based on and provided by the U.S. Coast Guard and USACE crew.

2015 Aerial Photography data source: NAIP, USDA-FSA-APFO Aerial Photography Field Office.

Reference is N.O.A. Navigation Chart No. 11370.

** Shoalest Sounding per Quarter per Reach.

*** High frequency (200 kHz) survey data represents the first signal return at a sounding location and will include suspended solids, known as "fluff", if present. Low frequency (20 kHz) survey data normally penetrates through this "fluff" layer to depict elevations of consolidated bottom material. Low frequency accuracies may vary depending on channel conditions and fathometer settings.

LWRP: 2.3
Gage Reading: BR:5.3 D:1.8 RTN: 4.75 NAVD
Sea Conditions: CALM
Vessel Name: LAFORUCHE
Survey Type: CS
Sounding Frequency***: HIGH

Feet
0 500 1,000 1,500 2,000 2,500

**Sheet Reference Number
6 of 97**