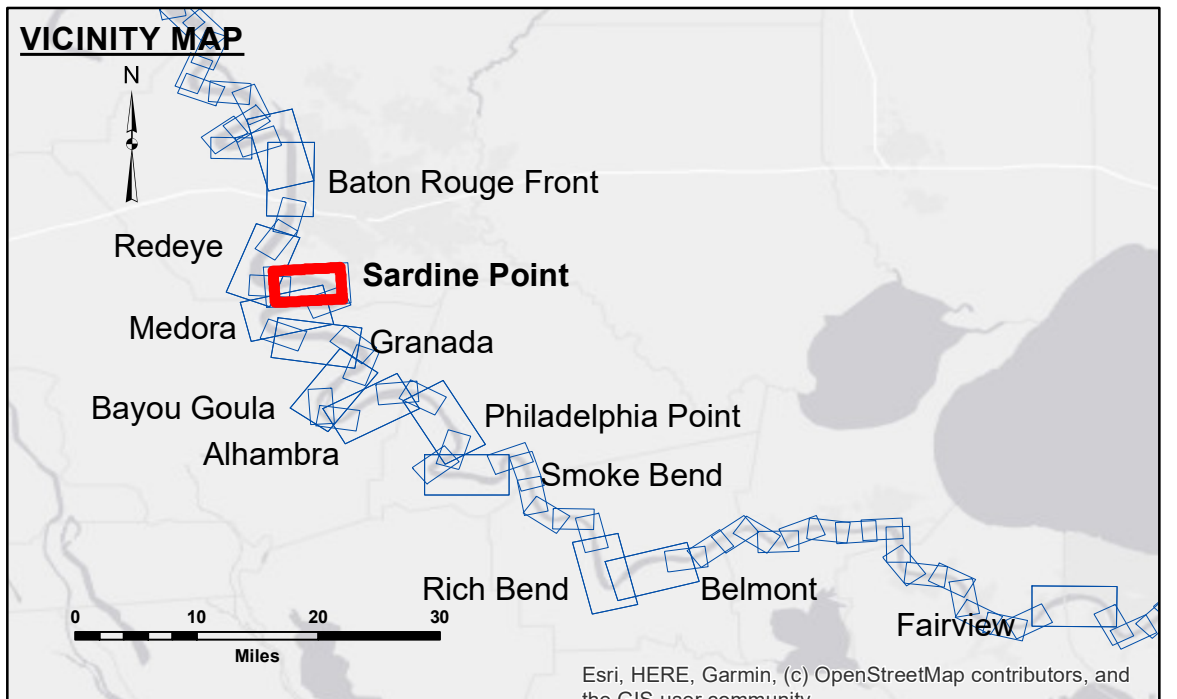


DISCLAIMER
 The information depicted on this map represents the results of a survey conducted by the U.S. Army Corps of Engineers. The data is provided for informational purposes only and is not intended for use in any other manner. The user is responsible for the accuracy, completeness, and reliability of the data. The user is responsible for the results of any application of the data for other than its intended purpose. The U.S. Army Corps of Engineers does not warrant the accuracy, completeness, or reliability of the data. The user is responsible for the results of any application of the data for other than its intended purpose. The U.S. Army Corps of Engineers does not warrant the accuracy, completeness, or reliability of the data. The user is responsible for the results of any application of the data for other than its intended purpose.

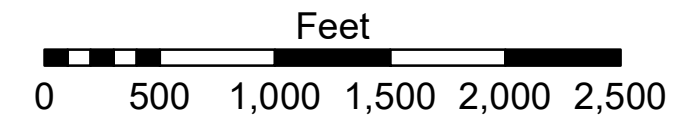
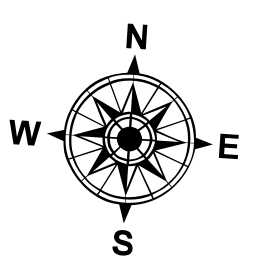
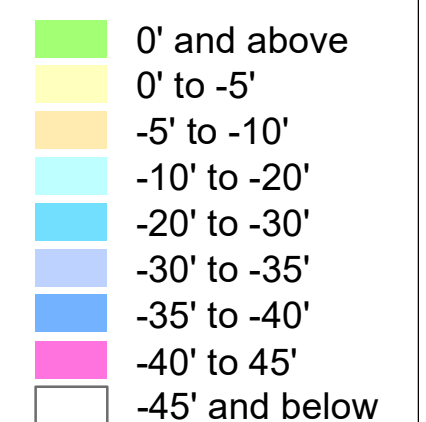
Submitted:	Surveyed By: SP-JS
Recommended: Chief Survey Section	Plotted By: BD
Approved: Chief Waterways Maintenance Section	Checked By: AO/JH

U.S. ARMY CORPS OF ENGINEERS
 NEW ORLEANS DISTRICT

**MISSISSIPPI RIVER - B.R. TO GULF
 SARDINE POINT CROSSING
 MD_06_SDP_20240403_CS
 03 April 2024**



LEGEND	
--- Federal Navigation Channel	● Cable Area
— Federal Navigation Center Line	□ Placement Area
— As-built Pipeline/Cable	□ Anchorage Area
..... Unconfirmed Pipeline/Cable	⊗ Obstruction Point
— Project Depth Contour	✈ Wrecks-Submerged
□ Borrow Area	★ Beacon, General
● Shoalest Sounding**	◆ Red Navigation Buoy
◆ Green Navigation Buoy	



LWRP: 2.3
 Gage Reading: BR:22.0 D:13.4 VRN:20.8 NAVD AVG.
 Sea Conditions: CHOPPY
 Vessel Name: OB-169
 Survey Type: CONDITION
 Sounding Frequency***: HIGH

NOTES:
 Horizontal Coordinate System: North American Datum of 1983 (NAD83), projected to the State Plane Coordinate System (SPCS), Louisiana South Zone. Distance units in U.S. Survey Feet.
 Vertical Datum: Soundings are shown in feet and indicate depths below Low Water Reference Plane 2007 (NAVD).
 Distances on the Mississippi River, above and below Head of Passes are shown at 1 mile intervals.
 The location of navigation aids are based on and provided by the U.S. Coast Guard and USACE crew.
 2015 Aerial Photography data source: NAIP, USDA-FSA-APFO Aerial Photography Field Office.
 Reference is N.O.A.A. Navigation Chart No. 11370.
 ** Shoalest Sounding per Quarter per Reach.
 *** High frequency (200 kHz) survey data represents the first signal return at a sounding location and will include suspended solids, known as "fluff", if present. Low frequency (20 kHz) survey data normally penetrates through this "fluff" layer to depict elevations of consolidated bottom material. Low frequency accuracies may vary depending on channel conditions and fathometer settings.

**Sheet Reference Number
 6 of 97**