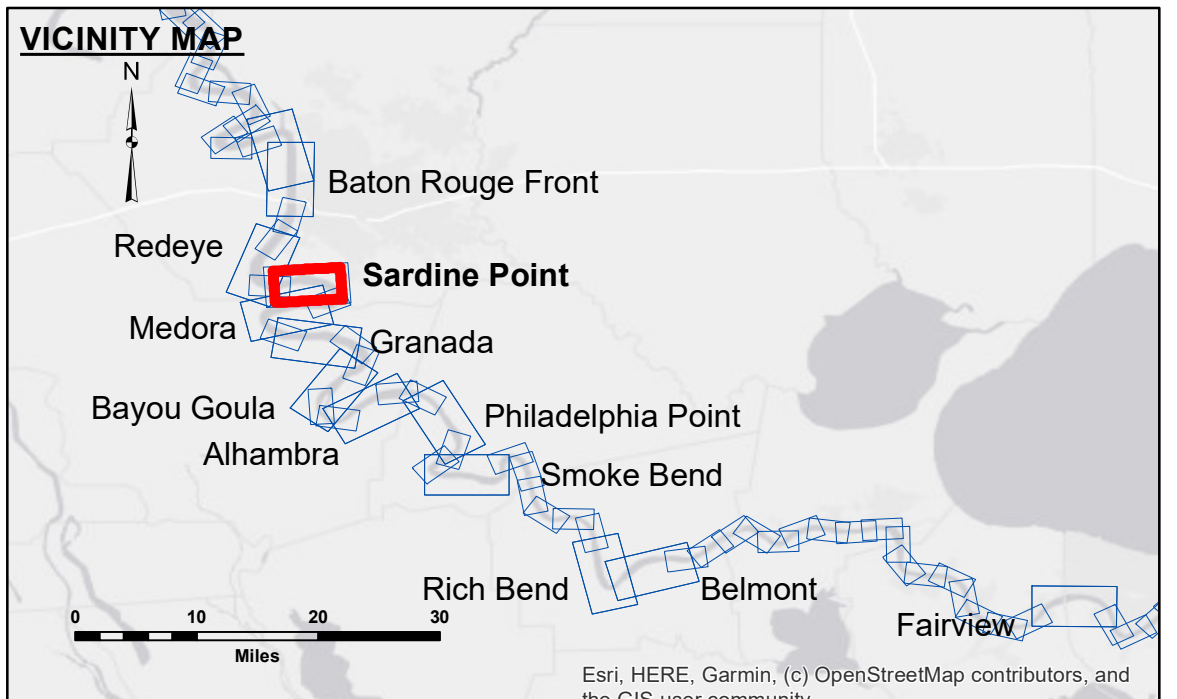


Accession: The United States Government Lend-Lease Administration and the War Relocation Authority. The data represents the results of data collection for a specific US Army Corps of Engineers project. It is only valid for its intended use, content, time and accuracy specifications. The user is responsible for the results of the application of the data for other than its intended purpose.

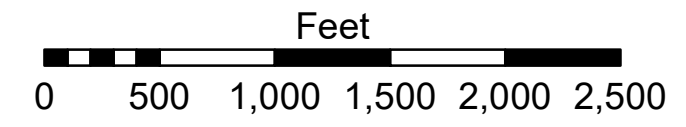
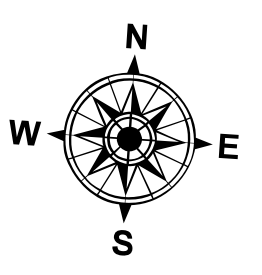
Disclaimer: The data represents the results of a survey conducted by the US Army Corps of Engineers. The data is subject to change due to several factors including but not limited to: changes in the hydrographical conditions which develop after the date of the survey; changes in the data; and changes in the data processing methods. The user is responsible for the results of the application of the data for other than its intended purpose.

U.S. ARMY CORPS OF ENGINEERS NEW ORLEANS DISTRICT		
Submitted:	Surveyed By: RYLAND/ADAMS	Plotted By: BD
Recommended:	Chief Survey Section	Checked By: AOJ/H
Approved:	Chief Waterways Maintenance Section	

**MISSISSIPPI RIVER - B.R. TO GULF
SARDINE POINT CROSSING
MD_06_SDP_20240717_CS
17 July 2024**



LEGEND		Depth Contours	
--- Federal Navigation Channel	○ Cable Area	■ 0' and above	■ 0' to -5'
— Federal Navigation Center Line	□ Placement Area	■ -5' to -10'	■ -10' to -20'
— As-built Pipeline/Cable	□ Anchorage Area	■ -20' to -30'	■ -30' to -35'
..... Unconfirmed Pipeline/Cable	⊗ Obstruction Point	■ -35' to -40'	■ -40' to 45'
— Project Depth Contour	✈ Wrecks-Submerged	■ -45' and below	
	□ Borrow Area		
	● Shoalest Sounding**		
	★ Beacon, General		
	◆ Red Navigation Buoy		
	◆ Green Navigation Buoy		



LWRP: 2.3
 Gage Reading: BR:19.7 D:11.4 USED:18.40 NAVD
 Sea Conditions: CALM
 Vessel Name: M/V LAFORUCHE
 Survey Type: CS
 Sounding Frequency***: HIGH

NOTES:
 Horizontal Coordinate System:
 North American Datum of 1983 (NAD83), projected to the State Plane Coordinate System (SPCS), Louisiana South Zone. Distance units in U.S. Survey Feet.
 Vertical Datum:
 Soundings are shown in feet and indicate depths below Low Water Reference Plane 2007 (NAVD).
 Distances on the Mississippi River, above and below Head of Passes are shown at 1 mile intervals.
 The location of navigation aids are based on and provided by the U.S. Coast Guard and USACE crew.
 2015 Aerial Photography data source: NAIP, USDA-FSA-APFO Aerial Photography Field Office.
 Reference is N.O.A. Navigation Chart No. 11370.
 ** Shoalest Sounding per Quarter per Reach.
 *** High frequency (200 kHz) survey data represents the first signal return at a sounding location and will include suspended solids, known as "fluff", if present. Low frequency (20 kHz) survey data normally penetrates through this "fluff" layer to depict elevations of consolidated bottom material. Low frequency accuracies may vary depending on channel conditions and fathometer settings.

**Sheet Reference Number
6 of 97**