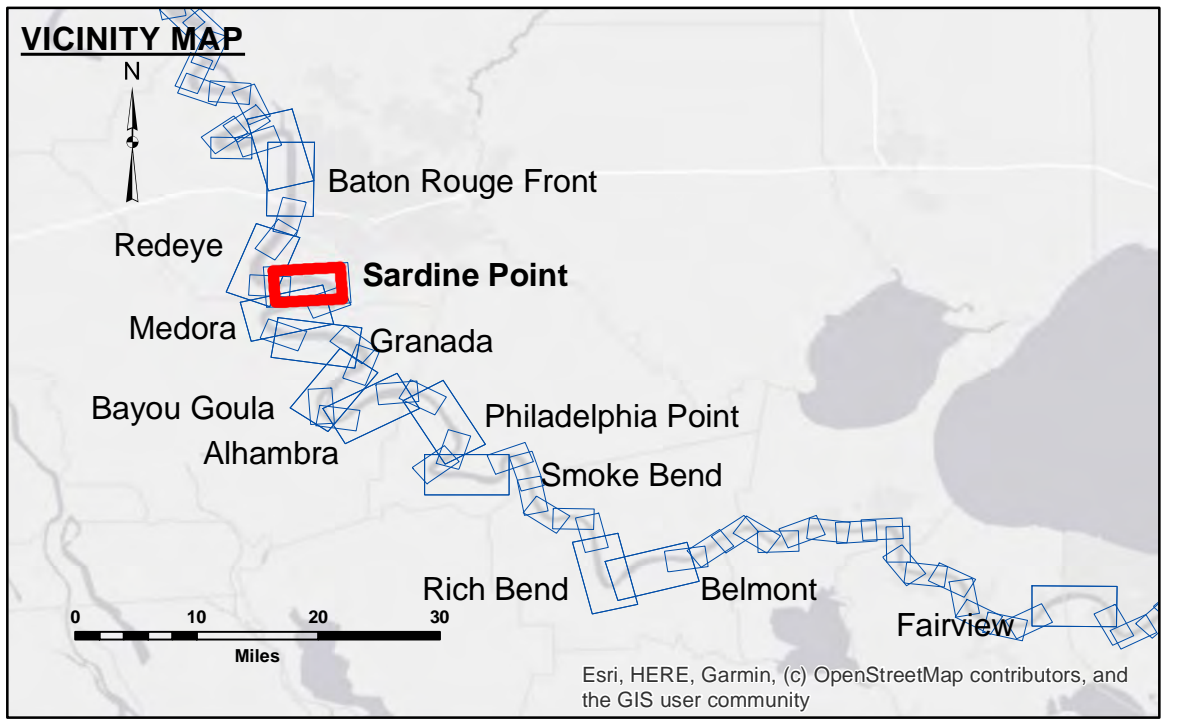


**DISCLAIMER:** The data represented on this map represents the results of a specific US Army Corps of Engineers project. The data is not intended for use in any other project. The user is responsible for the accuracy, completeness, and reliability of the data for their intended purpose. The application of the data for other than its intended purpose is at the user's risk. The user is responsible for the accuracy, completeness, and reliability of the data for their intended purpose. The application of the data for other than its intended purpose is at the user's risk. The user is responsible for the accuracy, completeness, and reliability of the data for their intended purpose. The application of the data for other than its intended purpose is at the user's risk.

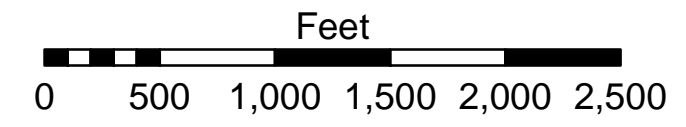
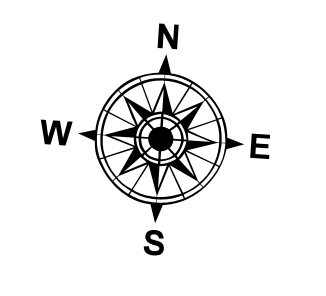
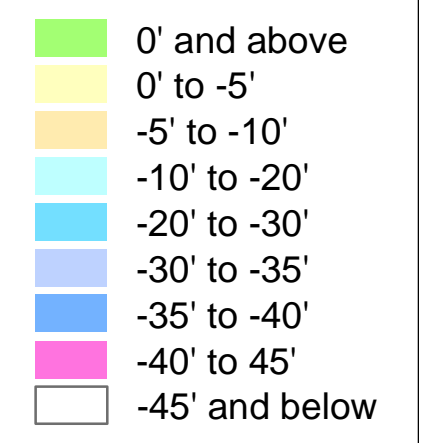
Submitted:	Surveyed By: SPPM
Recommended: Chief, Survey Section	Plotted By: BD
Approved: Chief, Waterways Maintenance Section	Checked By: AOJH

U.S. ARMY CORPS OF ENGINEERS  
NEW ORLEANS DISTRICT

**MISSISSIPPI RIVER - B.R. TO GULF  
SARDINE POINT CROSSING  
MD\_06\_SDP\_20240730\_CS  
30 July 2024**



LEGEND	
--- Federal Navigation Channel	● Cable Area
— Federal Navigation Center Line	□ Placement Area
— As-built Pipeline/Cable	□ Anchorage Area
..... Unconfirmed Pipeline/Cable	⊗ Obstruction Point
— Project Depth Contour	✈ Wrecks-Submerged
□ Borrow Area	★ Beacon, General
● Shoalest Sounding**	◆ Red Navigation Buoy
★ Beacon, General	◆ Green Navigation Buoy



LWRP: 2.3  
Gage Reading: BR:19.2 D:11.3 USED:18.1 NAVD  
Sea Conditions: CALM  
Vessel Name: M/V DUCARPE  
Survey Type: CONDITION  
Sounding Frequency\*\*\*: HIGH

**NOTES:**  
Horizontal Coordinate System: North American Datum of 1983 (NAD83), projected to the State Plane Coordinate System (SPCS), Louisiana South Zone. Distance units in U.S. Survey Feet.  
Vertical Datum: Soundings are shown in feet and indicate depths below Low Water Reference Plane 2007 (NAVD).  
Distances on the Mississippi River, above and below Head of Passes are shown at 1 mile intervals.  
The location of navigation aids are based on and provided by the U.S. Coast Guard and USACE crew.  
2015 Aerial Photography data source: NAIP, USDA-FSA-APFO Aerial Photography Field Office.  
Reference is N.O.A. Navigation Chart No. 11370.  
\*\* Shoalest Sounding per Quarter per Reach.  
\*\*\* High frequency (200 kHz) survey data represents the first signal return at a sounding location and will include suspended solids, known as "fluff", if present. Low frequency (20 kHz) survey data normally penetrates through this "fluff" layer to depict elevations of consolidated bottom material. Low frequency accuracies may vary depending on channel conditions and fathometer settings.

**Sheet Reference Number  
6 of 97**