

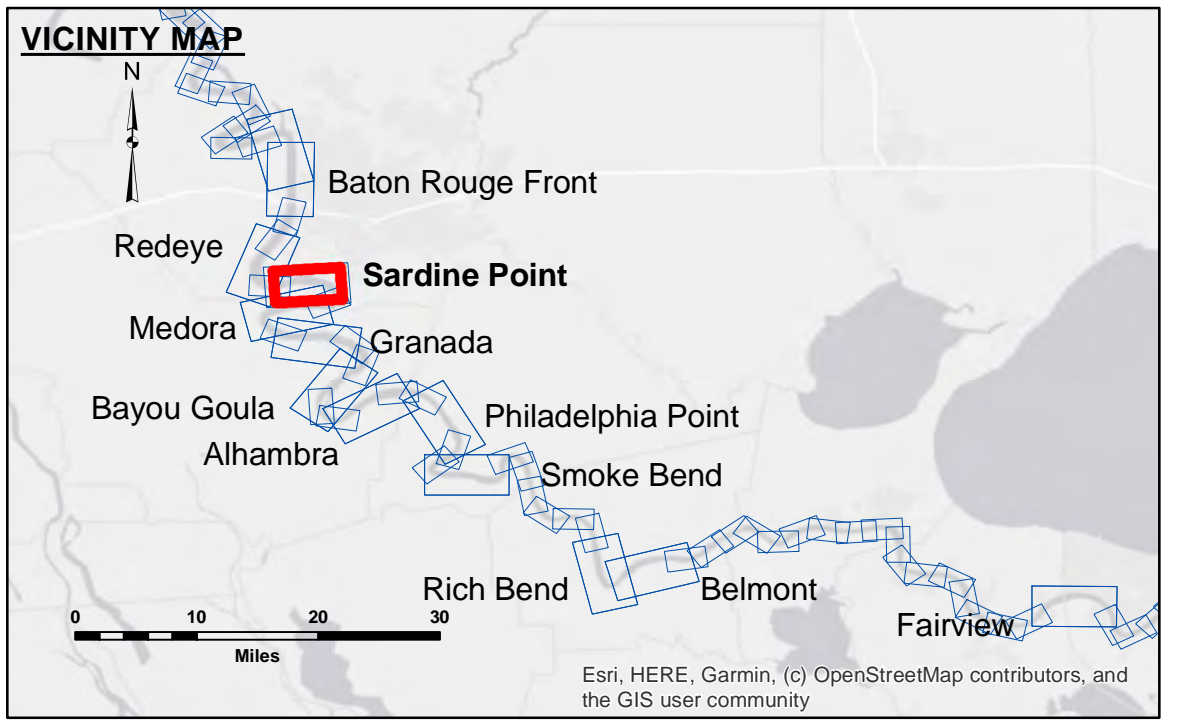
Distribution Liability: The data represents the results of data collection/processing for a specific US Army Corps of Engineers project. It is only valid for its intended use, control, time and accuracy specifications. The user is responsible for the results of their application of the data for other than its intended purpose.

Data Collection: Hydrographic survey data is subject to change due to several factors including but not limited to changing hydrographic conditions when developed after the date of the survey. The user is responsible for the results of their application of the data for other than its intended purpose.

Disclaimer: The information depicted on this map represents the results of a survey. It is not intended to be used for navigation or other purposes. The user is responsible for the results of their application of the data for other than its intended purpose.

U.S. ARMY CORPS OF ENGINEERS NEW ORLEANS DISTRICT		
Submitted:	Surveyed By: RYLAND/SIMMONS	Plotted By: BD
Recommended:	Chief, Survey Section	Checked By: ADJH
Approved:	Chief, Waterways Maintenance Section	

**MISSISSIPPI RIVER - B.R. TO GULF
SARDINE POINT CROSSING
MD_06_SDP_20241023_CS
23 October 2024**



LEGEND		SOUNDING DEPTHS	
--- Federal Navigation Channel	○ Cable Area	■ 0' and above	
— Federal Navigation Center Line	□ Placement Area	■ 0' to -5'	
— As-built Pipeline/Cable	□ Anchorage Area	■ -5' to -10'	
..... Unconfirmed Pipeline/Cable	⊗ Obstruction Point	■ -10' to -20'	
— Project Depth Contour	★ Beacon, General	■ -20' to -30'	
	◆ Red Navigation Buoy	■ -30' to -35'	
	◆ Wrecks-Submerged	■ -35' to -40'	
		■ -40' to 45'	
		■ -45' and below	

LWRP: 2.3
Gage Reading: BR:4.6 D:2.8 USED:4.30 NAVD
Sea Conditions: CALM
Vessel Name: M/V LAFORCHE
Survey Type: CS
Sounding Frequency*:** HIGH

NOTES:
 Horizontal Coordinate System:
 North American Datum of 1983 (NAD83), projected to the State Plane Coordinate System (SPCS), Louisiana South Zone. Distance units in U.S. Survey Feet.

Vertical Datum:
 Soundings are shown in feet and indicate depths below Low Water Reference Plane 2007 (NAVD).

Distances on the Mississippi River, above and below Head of Passes are shown at 1 mile intervals.

The location of navigation aids are base on and provided by the U.S. Coast Guard and USACE crew.

2015 Aerial Photography data source: NAIP, USDA-FSA-APFO Aerial Photography Field Office.

Reference is N.O.A. Navigation Chart No. 11370.

*** Shoalest Sounding per Quarter per Reach.

*** High frequency (200 kHz) survey data represents the first signal return at a sounding location and will include suspended solids, known as "fluff", if present. Low frequency (20 kHz) survey data normally penetrates through this "fluff" layer to depict elevations of consolidated bottom material. Low frequency accuracies may vary depending on channel conditions and fathometer settings.

**Sheet Reference Number
6 of 97**