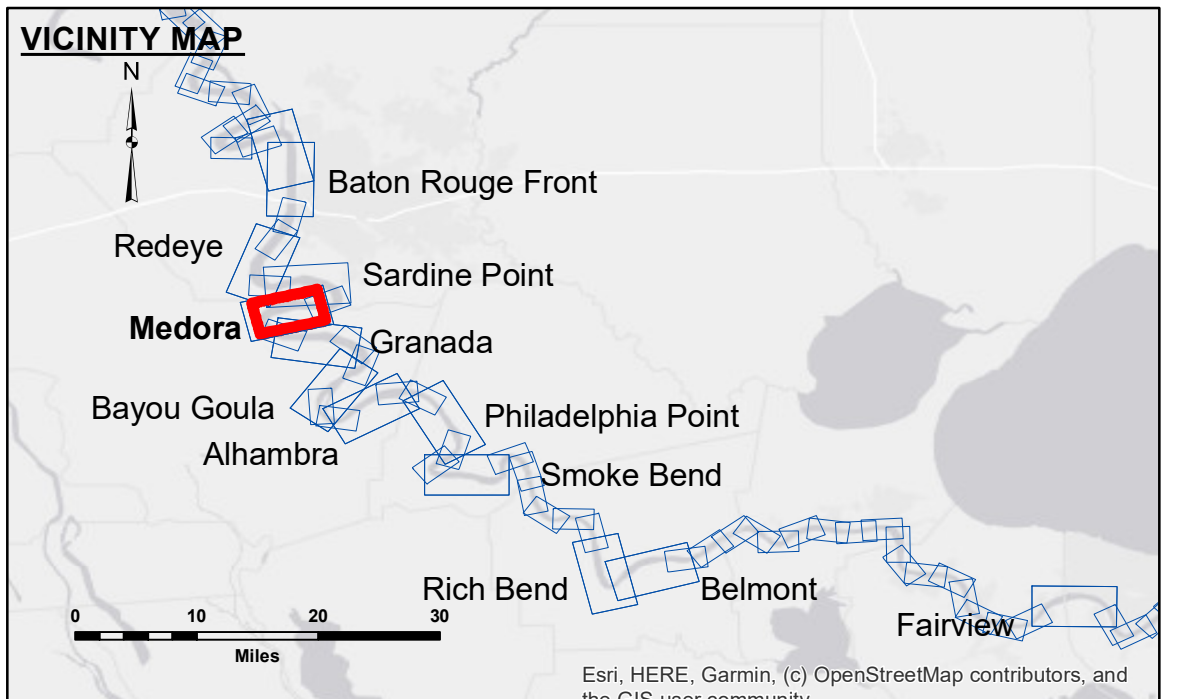


DISCLAIMER:
 The information depicted on this map represents the results of a survey conducted by the United States Army Corps of Engineers. This information is not intended for navigation and should not be used for that purpose. The user is responsible for the accuracy, completeness, readability, usability or suitability for any particular purpose of the information. The user is responsible for the accuracy, completeness, readability, usability or suitability for any particular purpose of the information. The user is responsible for the accuracy, completeness, readability, usability or suitability for any particular purpose of the information.

ACCESS AND LIABILITY:
 The United States Government furnishes these data and the recipient accepts and uses them with the express understanding that the information is not intended for navigation and should not be used for that purpose. The user is responsible for the accuracy, completeness, readability, usability or suitability for any particular purpose of the information. The user is responsible for the accuracy, completeness, readability, usability or suitability for any particular purpose of the information.

U.S. ARMY CORPS OF ENGINEERS NEW ORLEANS DISTRICT		
Submitted:	Surveyed By: RYLAND/HOSHMAN	Plotted By: BD
Recommended:	Chief, Survey Section	Checked By: AC
Approved:	Chief, Waterways Maintenance Section	

MISSISSIPPI RIVER - B.R. TO GULF
MEDORA CROSSING
MD_08_MEDX_20190813_CS
13 August 2019



LEGEND		
--- Federal Navigation Channel	○ Cable Area	□ Borrow Area
— Federal Navigation Center Line	□ Placement Area	● Shoalest Sounding**
— As-built Pipeline/Cable	□ Anchorage Area	☆ Beacon, General
..... Unconfirmed Pipeline/Cable	⊗ Obstruction Point	◆ Red Navigation Buoy
— Project Depth Contour	⚓ Wrecks-Submerged	◆ Green Navigation Buoy
		■ 0' and above
		■ 0' to -5'
		■ -5' to -10'
		■ -10' to -20'
		■ -20' to -30'
		■ -30' to -35'
		■ -35' to -40'
		■ -40' to 45'
		■ -45' and below

W **N**
S **E**

LWRP: 2.1
 Gage Reading: BR:28.5 D:18.8 USED:25.50 NAVD
 Sea Conditions: CALM
 Vessel Name: OB-189
 Survey Type: CONDITION
 Sounding Frequency***: HIGH

0 500 1,000 1,500 2,000 2,500
 Feet

NOTES:
 Horizontal Coordinate System:
 North American Datum of 1983 (NAD83), projected to the State Plane
 Coordinate System (SPCS), Louisiana South Zone. Distance units in U.S. Survey Feet.
 Vertical Datum:
 Soundings are shown in feet and indicate depths below Low Water Reference Plane 2007 (NAVD).
 Distances on the Mississippi River, above and below Head of Passes are shown at 1 mile intervals.
 The location of navigation aids are based on and provided by the U.S. Coast Guard and USACE crew.
 2015 Aerial Photography data source: NAIP, USDA-FSA-APFO Aerial Photography Field Office.
 Reference is N.O.A. Navigation Chart No. 11370.
 ** Shoalest Sounding per Quarter per Reach.
 *** High frequency (200 kHz) survey data represents the first signal return at a sounding location and will include suspended solids, known as "fluff", if present. Low frequency (20 kHz) survey data normally penetrates through this "fluff" layer to depict elevations of consolidated bottom material. Low frequency accuracies may vary depending on channel conditions and fathometer settings.

Sheet Reference Number
8 of 97

Revision Number:
 4-15-2019/0102