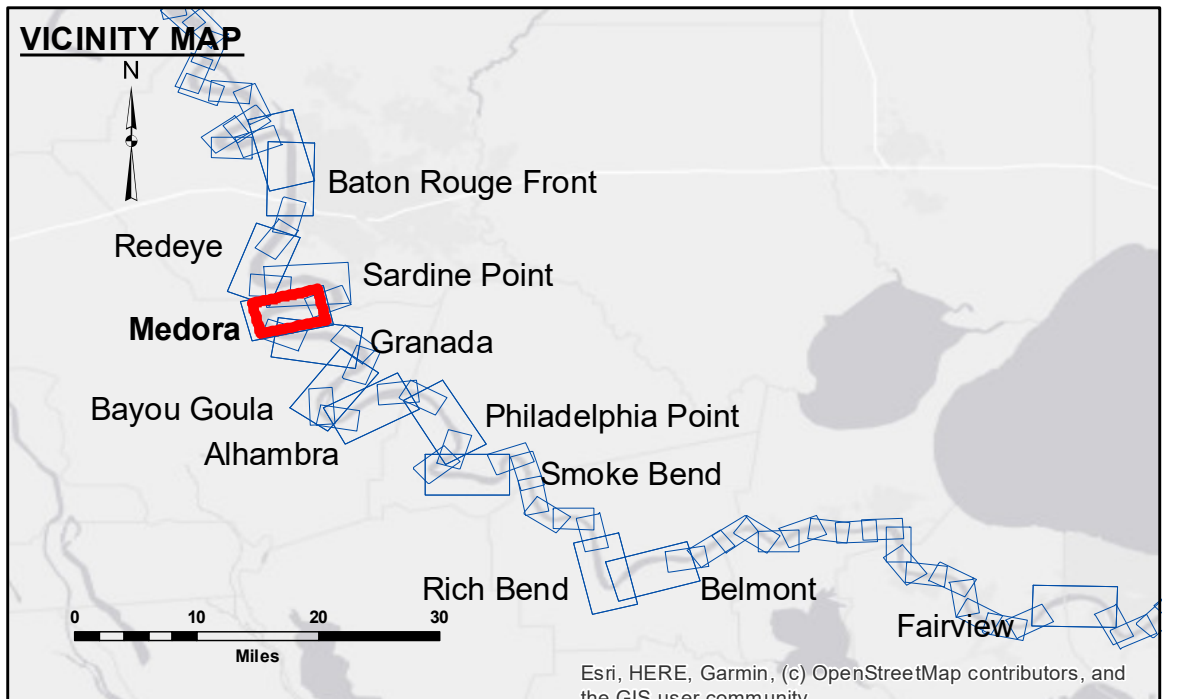


DISCLAIMER: The data represented on this map is the result of data collection and processing for a specific US Army Corps of Engineers project. The data is not intended for use in any other project or for any purpose other than that for which it was collected. The user is responsible for the accuracy, reliability, and completeness of the data. The user is also responsible for the accuracy, reliability, and completeness of the data. The user is also responsible for the accuracy, reliability, and completeness of the data.

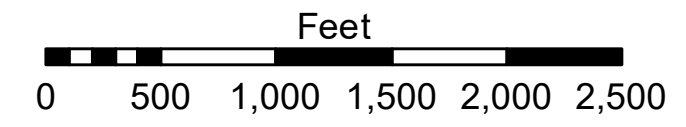
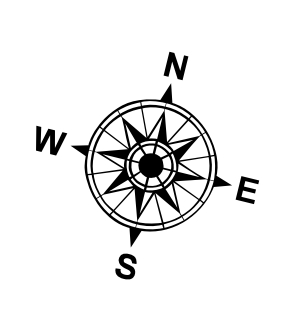
U.S. ARMY CORPS OF ENGINEERS NEW ORLEANS DISTRICT		
Submitted:	Surveyed By: RYLAND/SOUKI	Plotted By: AO
Recommended:	Checked By: AO	Checked By: AO
Approved:	Checked By: AO	

MISSISSIPPI RIVER - B.R. TO GULF
MEDORA CROSSING
MD_08_MEDX_20201210_CS
10 December 2020



LEGEND

- Federal Navigation Channel
- Federal Navigation Center Line
- As-built Pipeline/Cable
- Unconfirmed Pipeline/Cable
- Project Depth Contour
- Cable Area
- Placement Area
- Anchorage Area
- ⊗ Obstruction Point
- ✈ Wrecks-Submerged
- Borrow Area
- Shoalest Sounding**
- ☆ Beacon, General
- ♦ Red Navigation Buoy
- ◆ Green Navigation Buoy
- 0' and above
- 0' to -5'
- 5' to -10'
- 10' to -20'
- 20' to -30'
- 30' to -35'
- 35' to -40'
- 40' to -45'
- 45' and below



LWRP: 2.1
 Gage Reading: BR:16.5D:9.3 USED:14.3 NAVD
 Sea Conditions: CALM
 Vessel Name: M/V OB 167
 Survey Type: CONDITION
 Sounding Frequency***: HIGH

NOTES:
 Horizontal Coordinate System:
 North American Datum of 1983 (NAD83), projected to the State Plane Coordinate System (SPCS), Louisiana South Zone. Distance units in U.S. Survey Feet.
 Vertical Datum:
 Soundings are shown in feet and indicate depths below Low Water Reference Plane 2007 (NAVD).
 Distances on the Mississippi River, above and below Head of Passes are shown at 1 mile intervals.
 The location of navigation aids are base on and provided by the U.S. Coast Guard and USACE crew.
 2015 Aerial Photography data source: NAIP, USDA-FSA-APFO Aerial Photography Field Office.
 Reference is N.O.A. Navigation Chart No. 11370.
 ** Shoalest Sounding per Quarter per Reach.
 *** High frequency (200 kHz) survey data represents the first signal return at a sounding location and will include suspended solids, known as "fluff", if present. Low frequency (20 kHz) survey data normally penetrates through this "fluff" layer to depict elevations of consolidated bottom material. Low frequency accuracies may vary depending on channel conditions and fathometer settings.

Sheet Reference Number
8 of 97