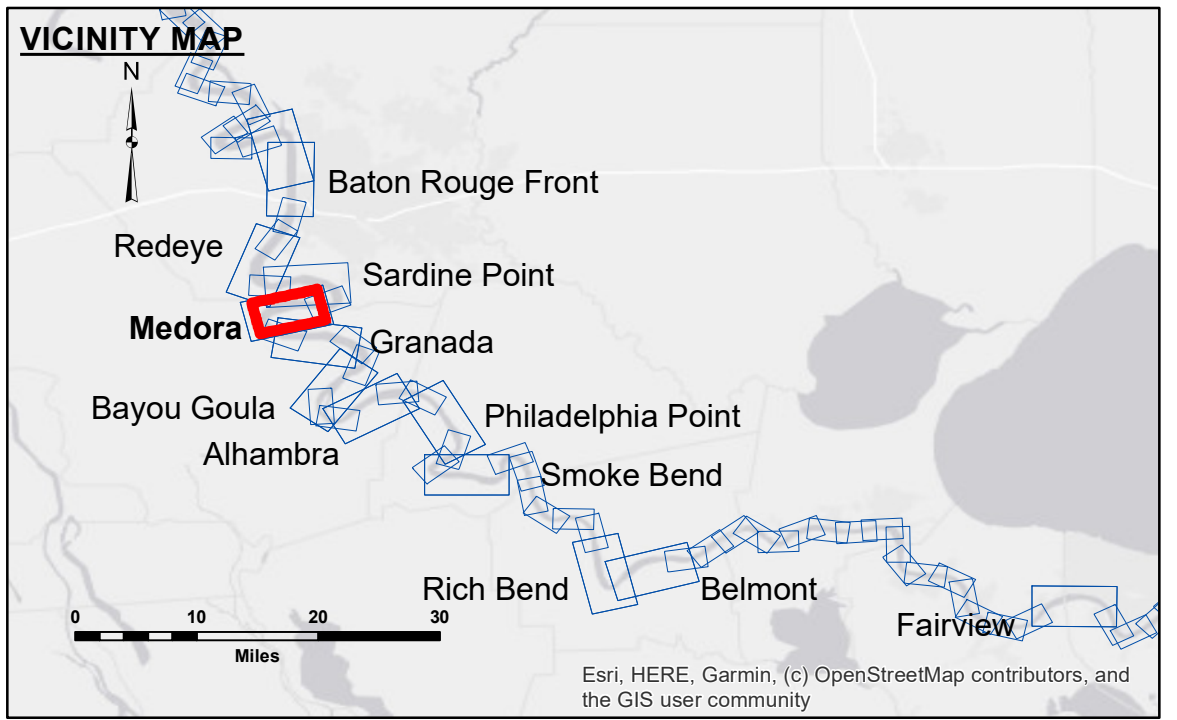


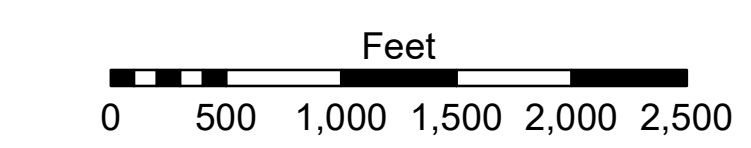
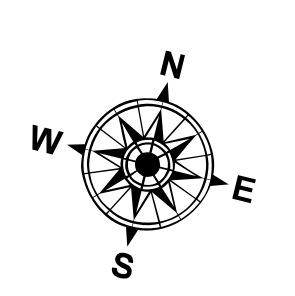
DISCLAIMER
 The information depicted on this map represents the results of a survey conducted by the U.S. Army Corps of Engineers. The data is for informational purposes only and is not intended for navigation. The user is responsible for the accuracy, completeness, and reliability of the data. The user is advised to verify the data before use. The U.S. Army Corps of Engineers does not warrant the accuracy, completeness, or reliability of the data. The user is advised to verify the data before use. The U.S. Army Corps of Engineers does not warrant the accuracy, completeness, or reliability of the data. The user is advised to verify the data before use.

Submitted:	Surveyed By: RYLAND/SIMMONS	Plotted By: BD	Checked By: AOJH
Recommended:	Chief, Survey Section		
Approved:	Chief, Waterways Maintenance Section		

MISSISSIPPI RIVER - B.R. TO GULF
MEDORA CROSSING
MD_08_MEDX_20231106_CS
06 November 2023



LEGEND		Depth
--- Federal Navigation Channel	○ Cable Area	0' and above
— Federal Navigation Center Line	□ Placement Area	0' to -5'
— As-built Pipeline/Cable	□ Anchorage Area	-5' to -10'
..... Unconfirmed Pipeline/Cable	⊗ Obstruction Point	-10' to -20'
— Project Depth Contour	★ Beacon, General	-20' to -30'
	◆ Red Navigation Buoy	-30' to -35'
	◆ Green Navigation Buoy	-35' to -40'
	◆ Wrecks-Submerged	-40' to 45'
		-45' and below



LWRP: 2.1
 Gage Reading: RTK: 3.75 NAVD AVG
 Sea Conditions: CALM
 Vessel Name: M/V LAFOURCHE
 Survey Type: CS
 Sounding Frequency***: HIGH

NOTES:
 Horizontal Coordinate System:
 North American Datum of 1983 (NAD83), projected to the State Plane Coordinate System (SPCS), Louisiana South Zone. Distance units in U.S. Survey Feet.
 Vertical Datum:
 Soundings are shown in feet and indicate depths below Low Water Reference Plane 2007 (NAVD).
 Distances on the Mississippi River, above and below Head of Passes are shown at 1 mile intervals.
 The location of navigation aids are base on and provided by the U.S. Coast Guard and USACE crew.
 2015 Aerial Photography data source: NAIP, USDA-FSA-APFO Aerial Photography Field Office.
 Reference is N.O.A. Navigation Chart No. 11370.
 *** Shoalest Sounding per Quarter per Reach.
 *** High frequency (200 kHz) survey data represents the first signal return at a sounding location and will include suspended solids, known as "fluff", if present. Low frequency (20 kHz) survey data normally penetrates through this "fluff" layer to depict elevations of consolidated bottom material. Low frequency accuracies may vary depending on channel conditions and fathometer settings.

Sheet Reference Number
8 of 97
 Revision Number:
 4.2-20200420