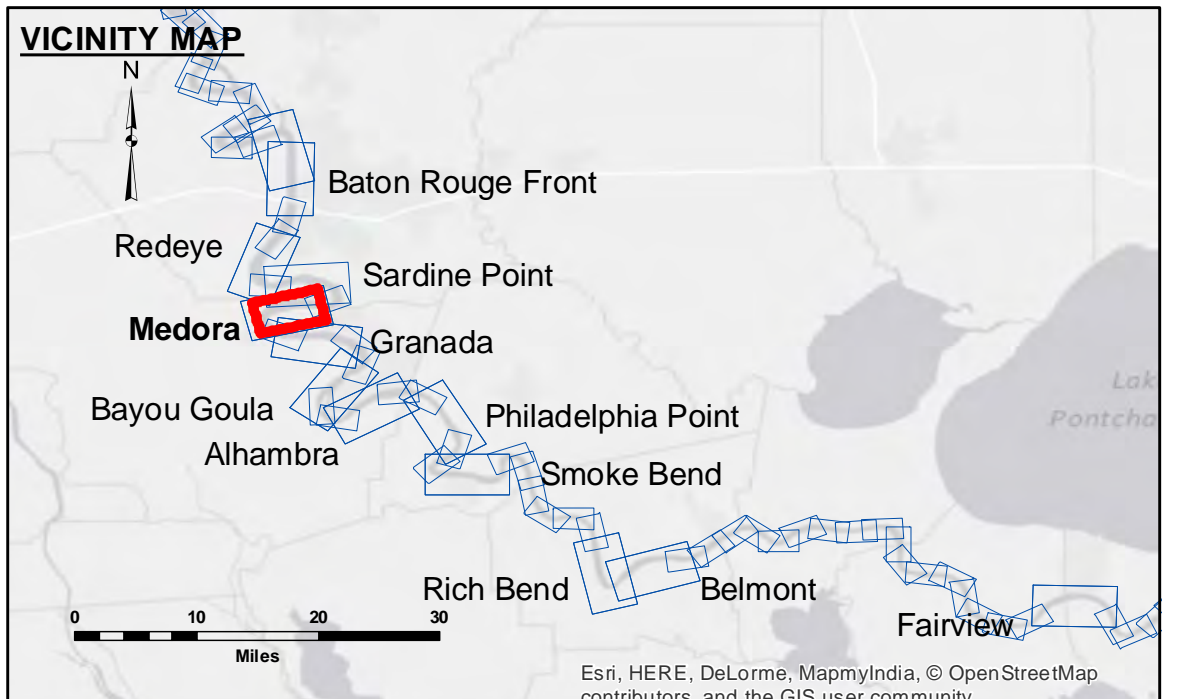


**DISCLAIMER:** The data represented on this map is the result of data collection performed for a specific US Army Corps of Engineers project and is only valid for its intended use. The user is responsible for the reliability, usability, or suitability for any particular purpose of the information. The user is responsible for the accuracy, completeness, or timeliness of the information. The user is responsible for the application of the data for other than its intended purpose. The information depicted on this map represents the results of a survey conducted by the US Army Corps of Engineers and is not to be used for any other purpose. The information depicted on this map represents the results of a survey conducted by the US Army Corps of Engineers and is not to be used for any other purpose.

U.S. ARMY CORPS OF ENGINEERS NEW ORLEANS DISTRICT		
Submitted:	Surveyed By: SPPS	Plotted By: AO
Recommended:	Checked By: IML	Checked By: IML
Approved:	Chief, Waterways Maintenance Section	

**MISSISSIPPI RIVER - B.R. TO GULF**  
**MEDORA CROSSING**  
**MD\_08\_MED\_20150823**  
**23 August 2015**



LEGEND		0' and above
--- Federal Navigation Channel	○ Cable Area	0' to -5'
— Federal Navigation Center Line	□ Placement Area	-5' to -10'
— As-built Pipeline/Cable	□ Anchorage Area	-10' to -20'
..... Unconfirmed Pipeline/Cable	⊗ Obstruction Point	-20' to -30'
— Project Depth Contour	★ Beacon, General	-30' to -35'
	◆ Red Navigation Buoy	-35' to -40'
	◆ Green Navigation Buoy	-40' to 45'
	◆ Wrecks-Submerged	-45' and below
	□ Borrow Area	
	● Shoalest Sounding**	

**NOTES:**

Horizontal Coordinate System:  
 North American Datum of 1983 (NAD83), projected to the State Plane Coordinate System (SPCS), Louisiana South Zone. Distance units in U.S. Survey Feet.

Vertical Datum:  
 Soundings are shown in feet and indicate depths below Low Water Reference Plane 2007 (NGVD).

Distances on the Mississippi River, above and below Head of Passes are shown at 1 mile intervals.

The location of navigation aids are based on and provided by the U.S. Coast Guard and USACE crew.

2010 Aerial Photography data source: NAIP, USDA-FSA-APFO Aerial Photography Field Office.

Reference is N.O.A. Navigation Chart No. 11370.

\*\* Shoalest Sounding per Quarter per Reach.

\*\*\* High frequency (200 kHz) survey data represents the first signal return at a sounding location and will include suspended solids, known as "fluff", if present. Low frequency (20 kHz) survey data normally penetrates through this "fluff" layer to depict elevations of consolidated bottom material. Low frequency accuracies may vary depending on channel conditions and fathometer settings.

LWRP: 2.1  
 Gage Reading: BR:19.0D:11.5 USED:16.7 NGVD  
 Sea Conditions: CALM  
 Vessel Name: M/V LAFOURCHE  
 Survey Type: CONDITION  
 Sounding Frequency\*\*\*: HIGH

**Sheet Reference Number**  
**8 of 97**