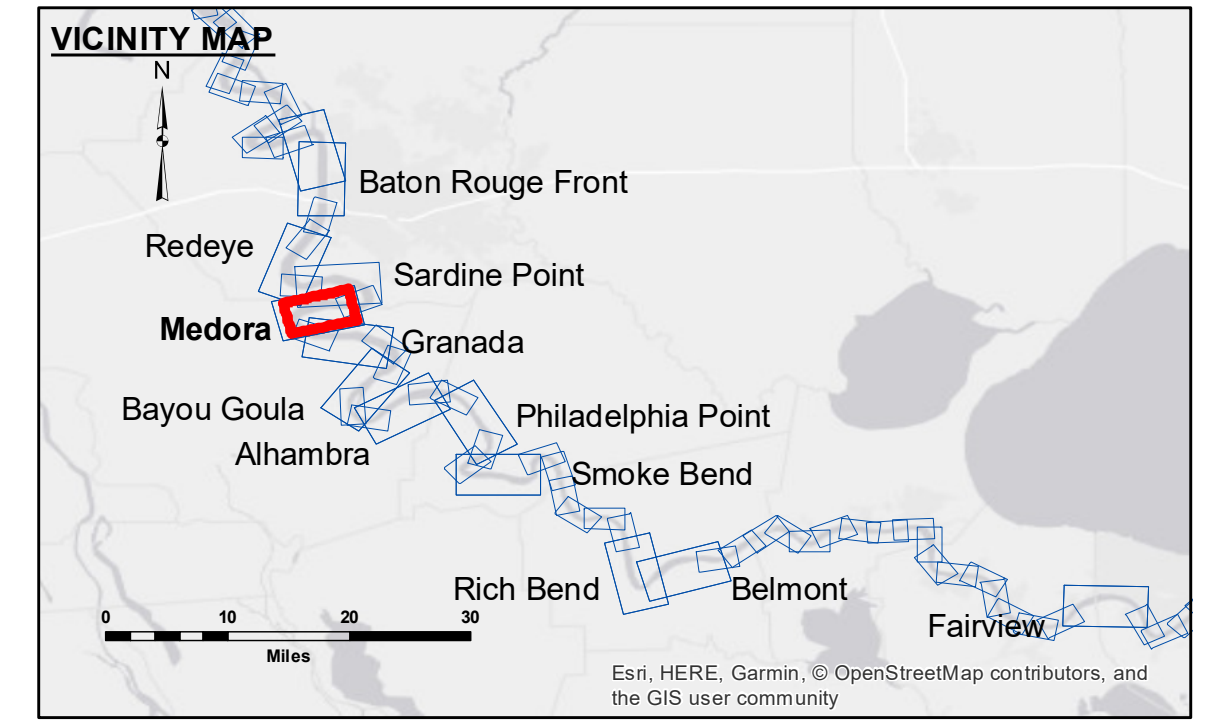


DIKE NO.	DIKE ELEVATION
1	-10 NGVD OR -12.1 LWRP
2	-4 NGVD OR -6.1 LWRP
3	2 NGVD OR -0.1 LWRP



LEGEND

- Federal Navigation Channel
- Federal Navigation Center Line
- As-built Pipeline/Cable
- Unconfirmed Pipeline/Cable
- Project Depth Contour
- Cable Area
- Placement Area
- Anchorage Area
- ⊗ Obstruction Point
- ✂ Wrecks-Submerged
- Borrow Area
- Shoalest Sounding**
- ★ Beacon, General
- ◆ Red Navigation Buoy
- ◆ Green Navigation Buoy
- 0' and above
- 0' to -5'
- -5' to -10'
- -10' to -20'
- -20' to -30'
- -30' to -35'
- -35' to -40'
- -40' to -45'
- -45' and below

LWRP: 2.1
 Gage Reading: BR:43.7D:31.5 USED:40.0 NGVD
 Sea Conditions: ROUGH
 Vessel Name: LAFOURCHE
 Survey Type: BD
 Sounding Frequency***: HIGH

North Arrow

Scale: 0 500 1,000 1,500 2,000 2,500 Feet

NOTES:

Horizontal Coordinate System:
 North American Datum of 1983 (NAD83), projected to the State Plane Coordinate System (SPCS), Louisiana South Zone. Distance units in U.S. Survey Feet.

Vertical Datum:
 Soundings are shown in feet and indicate depths below Low Water Reference Plane 2007 (NGVD).

Distances on the Mississippi River, above and below Head of Passes are shown at 1 mile intervals.

The location of navigation aids are based on and provided by the U.S. Coast Guard and USACE crew.

2015 Aerial Photography data source: NAIP, USDA-FSA-APFO Aerial Photography Field Office.

Reference is N.O.A. Navigation Chart No. 11370.

** Shoalest Sounding per Quarter per Reach.

*** High frequency (200 kHz) survey data represents the first signal return at a sounding location and will include suspended solids, known as "fluff", if present. Low frequency (20 kHz) survey data normally penetrates through this "fluff" layer to depict elevations of consolidated bottom material. Low frequency accuracies may vary depending on channel conditions and fathometer settings.



DISCLAIMER

The United States Government furnishes these data and the recipient accepts and uses them with the express understanding that the Government makes no warranty, expressed or implied, concerning the accuracy, completeness, reliability, usability or suitability for any particular purpose of the information furnished. The user is responsible for the results of the use of the information. The application of the data for other than its intended purpose is not intended. The user is responsible for the results of the use of the information. The application of the data for other than its intended purpose is not intended.

The information depicted on this map represents the results of a survey conducted on the Mississippi River. The information is not intended to represent the general condition existing at that time.

U.S. ARMY CORPS OF ENGINEERS
NEW ORLEANS DISTRICT

Submitted:	Surveyed By: DJS/SPS	Plotted By: AO	Checked By: AC
Recommended: Chief, Survey Section			
Approved: Chief, Waterways Maintenance Section			

**MISSISSIPPI RIVER - B.R. TO GULF
 MEDORA CROSSING
 MD_08_MED_20190326_BD
 26 March 2019**

**Sheet Reference Number
 8 of 97**